



February 2016

# NOOZE

The Suffolk Land Rover Owners Club Magazine



[WWW.SLROC.UK.COM](http://WWW.SLROC.UK.COM)

# FOR ALL YOUR LAND ROVER SERVICING NEEDS



- Fully Trained Land Rover Technicians
- The latest technology IDS & SDD diagnostics and repairs
- Competitive pricing with no hidden extras

## LINDACRE LAND ROVER SERVICE CENTRE

2 Farthing Road, Sproughton Industrial Estate, Ipswich, IP1 5AP  
Tel 44 (0)1473 461 751. Fax 44 (0)1473 744 048.

LINDACRE IPSWICH



GO BEYOND

## **NOOZE**

is the "mouthpiece" of the  
**Suffolk Land Rover  
Owners Club**

SLROC welcomes any  
comments, contributions or  
complaints from our members.  
Send your contributions to:

**Andy Jeff**

51, Woodbridge Road  
Newbourne, IP12 4PA.  
Tel: 07801 470055

Or email me at:

**nooze@slroc.uk.com**

### **COPY DEADLINE:**

**15th** of the preceding  
month at the very latest  
please.

SLROC uses CB Channel 7

The opinions expressed in this  
publication are not necessarily  
those of the Editor, Committee,  
Club or Company.

Neither can responsibility be  
taken for the accuracy or  
otherwise of articles or  
advertisements placed.

All logo's, legends and artwork  
remain the property of SLROC  
and may not be reproduced  
without permission from the  
Committee.

**©2002-2016 Suffolk Land  
Rover Owners Club Ltd**

We would like to thank  
**BETTAPRINT Woodbridge Ltd**  
For their help in producing  
Nooze

SLROC Supports both national  
and local 4x4 response groups

### **Cover Picture**

Chris Barber at the wheel of  
'Larry' in January.

## **Nooze News!**

A packed edition of Nooze this month with a few  
extra bits and bobs.

In the regular features, Rob and Ally are driving  
through Malawi oddly enough going sort of north in  
their long road trip south! No wonder it took so  
long!

Jack finishes off his day filming with dinosaurs and  
whilst it was a very long day, in the end he gets his  
just deserves for his efforts, always the best way!

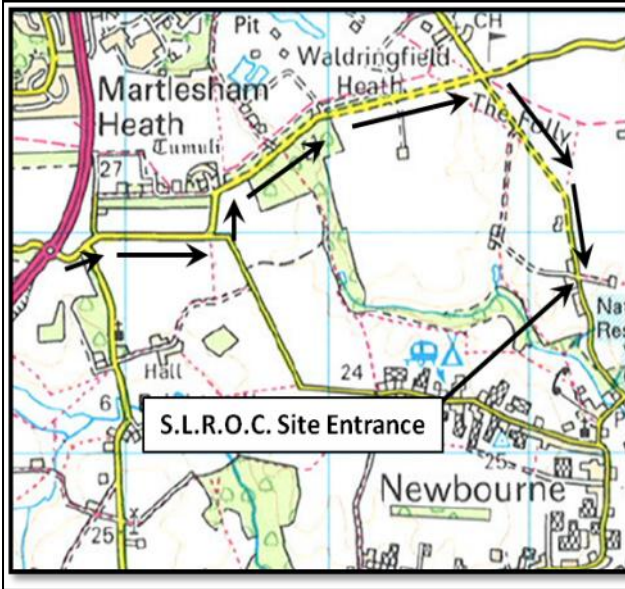
If you get 'The Landy' newspaper, the March  
edition has a similar write up from the Mince Pie  
Driving Day as you'll find here in Nooze. It's just  
another example of the nationals picking up on  
articles that we run...which leads me nicely into  
saying that if you send in articles of your Landy  
exploits to go into Nooze, you might well see them  
appearing in a publication for a much wider  
audience, It's great to get an article into LRO  
or the Landy! Whatever you and your Land Rover  
get up to often makes for a good story (muddy's  
ok, but keep it clean please!) so send them in!

Here's another plug for the online version of Nooze  
whilst I'm at it. You can get Nooze via email as well  
as or even instead of the printed version if you like!  
If you want to leaf through the electronic back  
catalogue (so to speak) you can visit the archive on  
the club web site at [http://www.slroc.uk.com/  
Nooze/Nooze\\_Archive/nooze\\_archive.html](http://www.slroc.uk.com/Nooze/Nooze_Archive/nooze_archive.html) It's been  
rolling now for over a couple of years and is a great  
resource. Maybe one day we'll do an index!

February is also quite a busy month with trials at  
both ends (Day-Into-Night and Tyro at the start  
and Winch at the end) and our regular driving day  
between them. The winter mud has certainly taken  
hold at Newbourne (not a surprise given the rain  
we've had) and if January was anything to go by,  
driving days right now are a whole load of muddy  
fun. We look forward to seeing you at any of these  
events whether taking part or spectating, see you  
there!

**Andy.**

# Directions to the Newbourne club site



The club has its very own off-road driving site which we use monthly for weekend events, and competitions. The site is situated to the east of Ipswich, near to the village of Newbourne. Strict rules must be adhered to when using the site, to protect the safety of all users. Please keep your speed down around the village, and especially on the access track which has a 5mph limit. See you there!

## Badwell Ash



## Snugg's Pit



OS sheet 155 grid ref TL 000 693

OS sheet 155 grid ref TL 826 421

## Chat From the Chair

We hear all too often the Farming and rural communities being warned or highlighting the ongoing issue of the theft of Land Rovers. More often than not it's usually outside our county, the likes of Devon, Derbyshire and Wales always seem to be the areas worst affected. However and more worryingly over the past few months and now weeks, reports of thefts much closer to home are cropping up. I've seen an increasing amount of discussions on the forum and club social media, with members discussing the latest thefts and voicing their concerns about the security of their beloved 4x4.

One of the draws of the Land Rover is partly its simplicity and rather basic build (likened to a giant Meccano kit). But this also seems to be its Achilles heel. For one, there seems to be a multitude of ways to A) get in and B) either start, drive off or allow the vehicle to be pushed or towed away. And once it has been stolen it can be stripped into its component parts in a matter of hours with little more than a couple of guys and a set of spanners (as kindly demonstrated by "*Country File*" a year or so ago). So take a minute to look at your Landy. There are loads of aftermarket security devices, some good some not so good, but pay a visit to the Club forum as there is a load of discussion about which is best and which to avoid. It's rare, but members have had vehicles stolen and it's almost impossible to understand how they feel. So have a think and stay vigilant.

On a lighter note, the Clubs events really start to get going this month with the Day into Night and Tyro Trials at the start of the month and as ever, they are always popular spectator events too. The show season prep is well under way, I had another meeting with the Suffolk Show organisers this week, discussing "dust management"! And don't forget that next month has the Clubs AGM. You'll find more details later on in Nooze but I would encourage as many members to come along as possible. We will continue the current trend to hold it during the lunch break of the March driving day, so bring a chair and your lunch and listen to a roundup of the past year and look to the year ahead. As always we will be voting on the clubs committee members and are always looking for any members willing to assist in the running of the club. It genuinely doesn't just all happen! The club needs members to volunteer their time in order to continue to make this club the success it is. If you think you might like to become a committee member or would like to know more then please give me or any of the committee a call and they will be happy to answer your questions.

That's all from me so I look forward to seeing as many of you as possible on the 13<sup>th</sup> March.

Happy Landrovering,

**Chris.**

## **EVENTS PLANNER 2016**

This planner is intended as a guide and as such any event may be subject to change.

<u><b>When</b></u>	<u><b>Club Event</b></u>	<u><b>Where</b></u>	<u><b>Org</b></u>
<b>Feb 6<sup>th</sup></b>	<b>Day into Night CCVT &amp; Camp Over</b>	<b>Newbourne</b>	<b>T. Gant</b>
<b>Feb 7<sup>th</sup></b>	<b>Tyro CCVT</b>	<b>Newbourne</b>	<b>C. Finbow</b>
Feb 21 <sup>st</sup>	Driving Day	Newbourne	M. Whitting
<b>Feb 28<sup>th</sup></b>	<b>Single Vehicle Winch Trial</b>	<b>Snuggs Pit</b>	<b>H. Jeff</b>
March 13 <sup>th</sup>	Driving Day & AGM ( <i>12:30-1:30pm</i> )	Newbourne	C. Finbow
<b>April 3<sup>rd</sup></b>	<b>CCVT</b>	<b>Badwell Ash</b>	<b>H. Jeff</b>
April 16 <sup>th</sup>	1 <sup>st</sup> Training Day & Camp Over	Newbourne	P. Corps
April 17 <sup>th</sup>	Driving Day	Newbourne	TBC
<b>May 14<sup>th</sup></b>	<b>Novice Winch Trial &amp; Camp Over</b>	<b>Newbourne</b>	<b>B. Welburn</b>
May 15 <sup>th</sup>	Driving Day	Newbourne	J. Smith
June 11 <sup>th</sup>	2 <sup>nd</sup> Training Day & Camp Over	Newbourne	P. Corps
June 12 <sup>th</sup>	Driving Day	Newbourne	TBC
July 23 <sup>rd</sup>	3 <sup>rd</sup> Training Day & Camp Over	Newbourne	P. Corps
July 24 <sup>th</sup>	Driving Day	Newbourne	TBC
<b>Sept 4<sup>th</sup></b>	<b>CCVT</b>	<b>Badwell Ash</b>	<b>M. Whitting</b>
<b>Sept 24<sup>th</sup></b>	<b>Tyro CCVT &amp; Camp Over</b>	<b>Newbourne</b>	<b>H. Jeff</b>
Sept 25 <sup>th</sup>	Driving Day	Newbourne	TBC
<b>Oct 22<sup>nd</sup></b>	<b>"Ladies" Tyro CCVT &amp; Camp Over</b>	<b>Newbourne</b>	<b>C. Finbow</b>
Oct 23 <sup>rd</sup>	Driving Day	Newbourne	C. Finbow
<b>Nov 6<sup>th</sup></b>	<b>CCVT</b>	<b>Snuggs Pit</b>	<b>A. Cutting</b>
Nov 20 <sup>th</sup>	Children in Need Driving Day	Newbourne	TBC
<b>Nov 27<sup>th</sup></b>	<b>Single Vehicle Winch Trial</b>	<b>Snuggs Pit</b>	<b>R. Lambourne</b>
Dec 27 <sup>th</sup>	Mince Pie Driving Day	Newbourne	G. King

**\*\*\*Events requiring Pre-Booking are in bold type\*\*\***

Driving Days - **£10\***

CCVT and Tyro Trials - still only **£15 Pre-Booked**

CCVT and Tyro Trial - Arrive & Drive (where permitted) **£20**

**\*Don't forget: It's only a fiver for each extra driver**

## **EVENTS PLANNER 2016**

This planner is intended as a guide and as such any event may be subject to change.

<b><u>When</u></b>	<b><u>Show</u></b>	<b><u>Where</u></b>	<b><u>CoC / Org</u></b>
March 20 <sup>th</sup>	Modified Car Show	Stonham Barns	A. Jeff
April 9 <sup>th</sup> – 10 <sup>th</sup>	Custom Car show	Stonham Barns	A. Jeff
30/4 - 1/5	Mid and West Suffolk Show	Stonham Barns	A. Jeff
June 1 <sup>st</sup> – 2 <sup>nd</sup>	Suffolk Show	Trinity Park	C. Finbow
June 18 <sup>th</sup> – 19 <sup>th</sup>	Vintage Rally and County Fair	Goodrich Park	N. Warden
July 2 <sup>nd</sup> – 3 <sup>rd</sup>	Country Fair, Wings & Wheels	Heveningham	R. Heather
July 30 <sup>th</sup> – 31 <sup>st</sup>	Land Rover Fest	Billing	N/A
Aug 7 <sup>th</sup>	Club Open Day	Newbourne	H+C+A Jeff
Aug 21 <sup>st</sup>	Classic Car Show	Stonham Barns	A. Jeff
Sept 17 <sup>th</sup> – 18 <sup>th</sup>	Henham Steam Rally	Henham Park	R. Heather
Sept 17 <sup>th</sup> – 18 <sup>th</sup>	LRO Show	Peterborough	S. Bareham

### **Single Vehicle Winch Challenge 28th February 2016 @ Snugg's Pit**

Snugg's Pit is a heavily wooded site and has much to offer drivers who enjoy powering up long hills and dodging between trees, there's also open areas of soil heaps and streams. With trees at every turn this is a fantastic venue for this type of winch event.

Each team will consist of two team members and one vehicle, the trial will be run in two classes "Class One" for trucks with multiple winches and additional traction aides and "Class Two" for vehicles with single front mounted winches and no additional traction aides.

Pre Booking for this event is via the Club Forum or [compsec@slroc.uk.com](mailto:compsec@slroc.uk.com) . Remember pre-booking entrance fee £25 or Arrive and drive £30, please remember ALL competitors must be club members. (pre-booking closes 2 weeks prior to the event to allow time to arrange the event insurance)

The day will begin at 9am for Scrutineering, followed by a prompt 10 am start (sorry, no late entries) and be prepared for a full day's winching aiming to finish at around 4pm.

Directions: Take the A131 or A134 to Sudbury and head for Ballingdon at the crossroads with the Kings Head Public house turn onto Bulmer Road heading for "The Belchamps"

Follow the road for about half a mile and then turn right onto "Finch Hill" follow this road over a small bridge and then follow the road round the sharp left hand bend. Continue on past the turn for Foxearth and take the next turn on the right signposted "Belchamps". The entrance to Snugg's Pit is about half a mile on the right. OS sheet 155 Grid ref TL 826 421

**Please Support Our Advertisers As They Support Us!**



**30 YEARS  
EXPERIENCE**

## **LAND ROVER SPECIALISTS**

- ✓ *Service*
- ✓ *Maintenance*
- ✓ *Parts*
- ✓ *Accessories*

**50% cheaper than the main dealer plus great discounts for club members!**

**WWW.JSF4X4.CO.UK**

**01206 396644**

**Unit 1, Causeway End Industrial Estate, Lawford,  
Manningtree, CO11 2LH**

**Please mention 'Nooze' when replying to adverts**



# **Notice of Annual General Meeting**

13/01/16

Notice is hereby given that the Annual General Meeting of the Suffolk Land Rover Owners Club Limited will take place on Sunday 13th March 2016 at the Newbourne SLROC site commencing at 12:30pm to transact the following business.

## **Agenda**

### **1. Apologies for Absence.**

### **2. Minutes of the AGM held on 15th March 2015.**

### **3. Reports.**

- Chairman's Report.
- Membership Secretary's Report.
- Treasurer's Report.

### **4. Election of officers.**

(Officers serve 3 years before re-election is necessary)

Chairman	-		(re-election due)
Vice Chairman	-	Andy Jeff	(re-election due 2017)
Treasurer	-	Michael Whitting	(re-election due 2018)
Secretary	-	Jack Myers	(re-election due 2018)

### **5. Election of Committee Members to serve for the following year.**

Nominations for any of the above posts to be passed in writing to the registered address or via email to [secretary@slroc.uk.com](mailto:secretary@slroc.uk.com) by 28th February 2016.

### **6. Any Other Business.**

All items for AOB to be sent in writing to the registered address or via email to [secretary@slroc.uk.com](mailto:secretary@slroc.uk.com) by 28th February 2016.

**Note: Only members whose subscriptions are up to date at the time of the AGM will be entitled to attend or vote.**

**Please bring your membership card with you.**

### **Registered Address:**

c/o Michael Whitting  
53 Suffolk Drive  
Rendlesham  
Woodbridge  
IP12 2TN

# LAND ROVER SPECIALIST



Servicing, Repairs and MOT work  
Vehicle Preparation

Autologic Diagnostic

Visionaire Tracking Systems

10% Discount for club Members ✳

**\* On Labour Only**

**SWB, Mutford Garage, Nr Beccles. NR34 7UL**



# **Training Agenda 2016**

## **Winch Training - April 16th**

Our first Training Day will be Winch Training, you don't need a winch to take part, everything you need will be supplied.

The course is in two parts, Theory in the morning, then a Practical exercise in the afternoon. If you're successful you will receive a certificate of competence, which is valid for three years.

If you're camping over or returning for the driving Day on the 17th, you can put into practice what you've learnt. There will be a small charge of £10 to cover administration and certification.

We can train nine members, so first come will have preference.

## **Marshal Training - 11th June**

Our second Training Day it's also a Camp-Over weekend, is Marshal Training. There are two types of Marshals, Full Marshal and Associate Marshal.

Full Marshal will include a theory and driving session, an Associate Marshal will have the theory only and have responsibility for Signing in/on, Scrutineering and assisting the Full Marshals. In no way is it a less important role.

If you're successful you will receive a certificate, valid for three years and be required to Marshal at least three club organised events a year to retain your qualification.

If you're camping over or turning up for the Driving Day on the 12th, you will be able to put into practice what you've learnt. There will be a small charge of £15 per head to cover administration and certification.

We can train nine members, so first come will have preference.

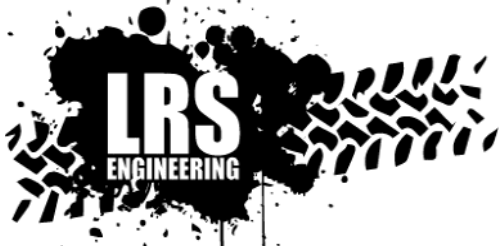
## **Novice Driver Training - July 23rd/24th**

Our third Training Day and Camp-over is for Novice Drivers, we are aiming the course towards our young drivers, from 13 year olds, who are allowed to drive in Tyro Trials but also any new members who feel they may need a little more instruction in Off Road driving, to gain more confidence.

The course will have both Theoretical and Practical sessions.

We can train nine members each day, so the 23rd will be for the non licence holding youngsters using their parents vehicle, or one they would use during a Tyro Trial. The Driving Day on the 24th will be for licence holding members with their vehicles.

**Pat Corps.  
Training & Safety Officer.**



[www.lrsengineering.co.uk](http://www.lrsengineering.co.uk)

# LAND ROVER SPECIALISTS



**SERVICING, REPAIRS, MODIFICATIONS  
PARTS & ACCESSORIES  
ROAD & OFFROAD**



**W WILDBEAR**



THE UK'S BEST  
**Bearthmach**  
LAND ROVER PARTS



**AllMakes4x4**  
Quality, Value and Performance

**TerraFirMa**

Serious 4x4 Accessories

**01787 469553 / [info@lrsengineering.co.uk](mailto:info@lrsengineering.co.uk)**

Unit 6 Westmead, Heddingham Rd, Gosfield,  
Halstead, Essex, CO9 1UP



# Mince Pie Driving Day 2015



Everyone loves a traditional Christmas time sporting fixture, going off to the football ground to cheer on your team, nipping out the race circuit for the Boxing Day meet in the freezing cold, it has to be done doesn't it?

Well not if you're a Land Rover fan in Suffolk it doesn't!

Every year as an antidote to the indulgence of Christmas Day, the Suffolk Land Rover Owners club put on their annual 'Mince Pie Driving Day' at their club site in Newbourne in the east of Suffolk and it's not unheard of to see a tinsel adorned Land Rover or two. The winter so far had been wet, windy and unseasonably warm, so no chance of any snow to add to



the fun, but it does mean plenty of water and mud to test out the multitude of drivers that came for the day.

By lunch time there was an absolute throng about the place. Stories of land Rover events, competitions and trips that had happened throughout the year grow like fisherman's tales, the mountains get higher, the water gets deeper and the trial sections get tighter but everyone has had a great year.

# EXTREME4X4

Suspension - Protection - Recovery

## EXTREME COMPETITION DAMPERS



200 psi Nitrogen charged. Solid 20mm S45C steel shaft chrome plated for long life with 'Hollite' Seal. Fully serviceable. From -2 1/2" to +6".

## EXTREME CHALLENGE DAMPERS



Solid 20mm S45C steel shaft chrome plated for extra long life with 'Hollite' Seal. Standard mountings - easy replacement of existing dampers.

## EXTREME SUSPENSION KIT



The Extreme Suspension Kit is without doubt the ultimate bolt on extreme suspension kit available today. The Extreme Kit has helped it's drivers pick up the winners trophies at numerous events in the UK and overseas. Upgrades are available to the kit.

## EXTREME BRAKE HOSES



BESPOKE LENGTHS  
MADE TO ORDER.

Our Extreme brake lines are made from top quality stainless steel fittings swaged directly onto a hard drawn tensile stainless steel braided Teflon hose.

This eliminates that "spongy" feeling often found with rubber hoses under extreme braking conditions - just when you need their performance most. Available for Defender, Discovery 1, 2 AND 3, Range Rover Classic. Made in the UK.

**EXTREME BRAKE HOSES  
NOW AVAILABLE FOR  
DISCO 3!**



The **EXTREME** Suspension kit's spring slider platform dislocating and re-engaging.

## EXTREME SPRINGS



Silicon steel, heat treated, shot peened and powder coated. Springs are updated to suit your requirements. Standard height to +6" available.

## EXTREME ROSE JOINTED TRAILING ARMS



To cope with Extreme articulation. Complete with rose joints, chassis brackets and all necessary fixing hardware. Available for: 90, 110, RRC, & D1.

## EXTREME PANHARD RODS



Adjustable from -2" to +6" lift. Bushed adjustable eye or rose joint. Available for 90, 110, 130, D1 & D2, RRC & P38.

## EXTREME ANTI ROLL BAR KITS



90, 110, 130, RRC & Disco 1, 30% or 50% uprated. Bushes, brackets & droplinks available if required. No mods required.

## AIR TO COIL SPRING CONVERSION KIT



Air to Coil Spring Conversion Kits are available for Range Rover Classic, P38 and Discovery 2 rear. See website for more information.

## EXTREME RADIUS ARMS



3" castor corrected. Heat treated, shot peened, zinc primed and powder coated. Available for: 90, 110, RRC, Disco 1, 2.

**1000'S OF PRODUCTS ON WWW.EXTREME4X4.CO.UK**



sales@extreme4x4.co.uk

Tel: +44 (0)1206 868 411

Open Mon - Fri 9-5pm

UO 10.15

Out on the site, it's a good job there's not a penalty fee for getting your Land Rover stuck in the mud as the marshals are 'assisting' drivers all over the place. Fortunately, no one breaks anything during the day with the worst mechanical casual being one of the local mechanics having to contend with a dodgy immobilizer on a 90.



Mince pie by name and mince pie by nature, club members Maureen and Norman Southgate not only supply home made mince pies, but lashings of home baked snacks, cakes and what seems like gallons of hot soup to feed and warm up all the festive drivers, guests, marshals, organisers and anyone else there for the day. Indeed the queue at the refreshments marquee stayed solid throughout the lunchtime break.



One of the highlights of the day is being able to announce the results of the clubs efforts in



raising cash for local charities throughout the year. At numerous country fairs and local shows, SLROC members donate their time, vehicles and fuel and get organized to give a taste of off roading to members of the public and in return collect funds that are 100% donated to charities nominated by club members.

In 2015 the club was extremely pleased to announce that it had had it's best ever year and managed to raise £13,500 for its nominated charities. The majority of the funds went to the Suffolk Accident Rescue Service who for more than 43 years have provided specially trained doctors and paramedics to the East Anglian Ambulance Service at the scenes of serious incidents – both accidents and medical illnesses, and the East Anglian Air Ambulance, a 365 day-a-year lifesaving service working across Bedfordshire, Cambridgeshire, Norfolk and Suffolk. The guys and girls from all the nominated charities who were able to attend on the day to receive their cheques were also treated to plenty of muddy fun in the afternoon as a number of the club members took them out to show them how we'd managed to raise the funds.

All in all a great day was had by all. The weather cleared up to be at least a bit drier before lunch time and as dusk fell on the day, everyone left having had another great day testing their Land Roving skills and meeting friends at SLROC.





## Messages Received From 2015 Charities

### **Ben Hall - SARS**

*We were really honoured to be one of the chosen charities of the Suffolk Landrover Owners Club, last year. During the course of 2015, we met up with members of the club at various events and a friendlier bunch of people you couldn't wish to meet. It was amazing to receive such a fantastic donation which was a testament to all their hard work over the last year. We aim to use the money given to help fund vehicle and equipment costs for our critical care volunteers in 2016. SARS relies on voluntary donations to support its lifesaving work and a donation like this will have a massive impact. We would once again like to thank everyone at SLROC for their support in 2015 .*

### **Cindy Dickerson - EAAA**



### **Sue Pollard - Newbourne Village Hall**



# February Deals



**Terraforma Pro Sport Suspension Lift Kit +2"**  
**(Discovery 1, Range Rover Classic, Defender 90)**

**£283.83**

**Terraforma Pro Sport Suspension Lift Kit +2"**  
**Heavy load ( Disco 1, RRC, Def 90)**

**£293.04**

**Terraforma Pro Sport Suspension Lift Kit +2"**  
**(Defender 110 and 130)**

**£330**

**Britpart heavy duty Suspension Lift Kit +40mm**  
**(Disco 1, RRC, Def 90)**

**£210**

**Terraforma Steering Damper (Disco 1, RRC)**

**£32.40**

**Terraforma Steering Damper (Defender 90/110/130)**

**£31.20**

Many other kits available.

Springs and dampers also sold separately. Please enquire for more details.  
All prices include VAT



**Mansfield 4x4**  
**BURY ST. EDMUNDS LTD**

**01284 767174**

[www.mansfield4x4burystedmunds.com](http://www.mansfield4x4burystedmunds.com)



# Mansfield 4x4

BURY ST. EDMUNDS LTD

01284 767174 [www.mansfield4x4burystedmunds.com](http://www.mansfield4x4burystedmunds.com)

**Parts, Accessories, Service, Repair and Diagnostic Testing  
for all models of Land Rover and Range Rover**



**MOT Testing for all cars**  
**3D wheel alignment available**



**Winch mounts • Side bars • Underbody protection • Exhausts  
Engine and Clutch upgrades • Wheels and Tyres**

**And much more....**

**Email: [info@mansfield4x4.net](mailto:info@mansfield4x4.net)**

Unit A1 Chase Road, Northern Way Ind. Est., Bury St Edmunds, Suffolk, IP32 6NT



**All Makes 4x4**  
Quality, Value and Performance

**TerraFirma**  
Service for Accessories

**ODYSSEY**  
THE EXTREME BATTERY

**DRAPER**

**GS**

**WARN**

**BRITPART**

**Bearmech**

**COOL**

**LightFORCE**  
Performance Lighting

**GOODWINCH**

**SUPERWINCH**

# Not Just An Extra - Stepping Back In Time

By Jack Myers

## **Continued from last month...**

It was starting to get dark as the evening progressed and we moved to the next location. This was in the ordinance storage area, chosen because of its security checkpoint, complete with guardhouse, barbed wire security fencing and large gates. For this scene, we were to escort the dinosaur through the checkpoint which was now manned by several soldiers. We drove up in a single file convoy, stopped at the gates and waited for them to be opened, ready for the soldiers to wave us through. This was repeated several times with different camera shots, and some aerial filming with the drone.



With the darkness rapidly falling, everyone packed up and headed to the base's restaurant, ready for an evening meal. I had a steak pie paid for by the film company and had a chat with the other drivers, which was good as we had been so busy driving, moving vehicles around and waiting for instructions that we hadn't had time to properly talk. We also got to view some of the raw footage on the director's laptop. After about an hour for dinner, we all got back in our vehicles to head into the centre of the base. By this time, it was pitch black and very difficult to see where we were driving. There is no illumination on the airfield, as all the street lamps and other lighting systems are not switched on.

Without following the other vehicles, it would be very easy to get lost in the maze of roads and runways. After about a 10 minute drive, we arrived at the last filming location. This was a very large hangar with electrically operated doors. The premise for this scene was for the lorry to be driven into the hangar to drop off the dinosaur.



With the evening progressing and the temperature dropping, this was the last scene to film. The engine on my truck had been running all day, and had only been switched off when we stopped for dinner. This had just about brought the temperature of the truck to above freezing cold! 2.5 N/A diesel engines do not get very hot, especially when fitted with a V8 radiator, oil cooler and larger fan, as is standard for the military variants! The only part of me which was properly warm was my hands, as the heater vents are well within arms reach.

As the various cameras were set up, along with multiple floodlights, we were once again called over by the director to discuss this final scene. The doors of the hangar were to be opened, the soldiers were to move out from the hangar, weapons drawn and the dinosaur would drive forward into the hanger. The escort Land Rovers needed to pull up alongside the lorry and wait, while the soldiers moved back inside and the doors closed, thus concluding the filming. Like the others, this scene was shot multiple times with different combinations of vehicles, positioning and soldiers.



# HILLCREST

VEHICLE SOLUTIONS

LAND ROVER SPECIALISTS

- **Specialist Repairs** requiring body removal
- **Chassis repairs** and replacement
- **Engine conversions** and replacement
- **Rebuilds**
  
- **MOT**  
Discount if booked with a service
- **Servicing**  
We carry out servicing to manufacturers specifications
- **Repairs**  
All general repairs
- **Diagnostics**  
Using the latest diagnostic technology
- **All makes and models welcome**  
Modern and classic

**All mechanical work guaranteed for  
12 months or 12,000 miles**

Hillcrest Vehicle Solutions Ltd, Hillcrest Garage, Cratfield Road,  
Huntingfield, Halesworth, Suffolk, IP19 0QB

Tel: 01986 798668 Email: [info@hillcrestvs.co.uk](mailto:info@hillcrestvs.co.uk)

Please call Jono Rout or Sandra French  
for a no obligation quote or friendly advice



Finally at about 11:30PM it was time to go home. Dan the vehicle organiser paid me £250 plus £40 fuel, as I was preparing the vehicle to go home. Antennas and military registration plates were removed and the flashing beacon was returned. The canvas was secured and I was ready to exit the site. Another 10 minute drive in complete darkness saw us come to the thankfully illuminated entrance, ready to exit the air base for the drive home.

### **Jack Myers**

Just in case you hadn't seen Jack's Defender, here he is at the Suffolk Show.



## 26 Countries... 26000 miles... Zero Punctures! - Part 36

**Day 192 10/6. Mabuya Camp, Lilongwe, Malawi**  
**13°59.97'S 33°45.57'E. Miles today 91, Total Miles 17870**



Whoa, best border crossing ever! Hello, welcome to Malawi. How are you? Stamp, stamp, stamp. Off you go. Ace! We enquired about the Comesa Yellow Card Insurance, which covers Southern Africa but we were told it was only available in Lilongwe, so we picked up the obligatory one month temporary insurance at Prime Insurance. (€25) The road was good all the way to the capital, with bicycles

most certainly being the preferred mode of transport. They seemed to be using them as donkeys, piled high with all manner of stuff and more so, as taxis. Take note of the signs some of them have painted on the back. Some say Toyota, others offer 4x4! There were also heaps of street food stalls selling fried potatoes and we just had to stop. Man, they were delicious. Just 50c for a bag, fresh and hot with lashings of salt. We pulled up at the backpacker and overlander haunt called Mabeya Camp (the old Kiboko). Rob spotted a huge bright yellow Unimog parked in the corner and so I see his mind wandering off to thoughts on the next truck. I mean, who doesn't love a Unimog? At the small bar inside, we met the owners, Tom and Janey who travelled the same route as us through Africa last year in the Unimog with their dog, Alf. On reaching Malawi, they had fallen in love with it and promptly



bought this campsite. Needless, to say, the evening was spent in the bar with them, laughing hysterically about the antics of travelling through Central Africa.

**Day 193 11/6. Mabuya Camp, Lilongwe, Malawi**  
**13°59.97'S 33°45.57'E. Miles today 0, Total Miles 17870**

We spent the day trying to sort out this Comesa Insurance thing. After much traipsing around town, I'll save you the trouble and tell you to go straight to Nico Insurance. (The office upstairs in the Nico centre in the Old Town) It worked out at €70 for 3 months and covers a whole heap of countries. Even though we only have a few countries left, so won't actually save a huge amount of money, it was still worth getting just to save on the hassle of having to pick up insurance at each border.



All you need to take is your V5 (car registration papers) and the cash in Kwacha. There are plenty of exchange bureaus around. For cash, it's better to try the Lebabnese guys who run the 7 eleven, who are always eager for dollars. A quick wonder around the zillions of craft stalls in town and I can see that I'm gonna be in trouble. Heaps of very cool things to buy. Back at Mabeya camp and after a quick tour around life in the famous Unimog and more crying with laughter with Tom and Janey over the joys of African travel, we flopped into bed.

**Day 194 12/6. Cool Runnings, Sanga Bay, Malawi**  
**13°43.84'S 34°37.14'E. Miles today 85, Total 17955**

We decided to head south for a bit to explore Southern Malawi before heading up north. On advice from the Big Yellow Mog guys, we headed towards the haven of Senga Bay on the lake. After a pit stop for more fried potatoes, we reached a great campsite, tucked in behind a bustling village, called Cool Runnings. Sam, who runs the place, really has made a huge effort in making the place special. We felt very at home. Not much to do here though, except chill, which we did particularly well, enjoying their awesome G and T's in the breezy bar and the lounge with comfy sofas and TV. We are loving Malawi.

**Day 195 13/6. Fat Monkey Lodge, Cape McClear, Malawi**  
**14°01.46'S 34°50.50'E. Miles today 103, Total 18058**

Drove south along lake Malawi with a quick detour at the Mua Mission, which has a cool workshop selling amazing elaborate carvings. There is a museum in the village and the gardens are lush and beautiful. It's generally just a fab place



to get the feel of local life and hang out for a bit. We finally reached Cape McClear

and settled into the Fat Monkeys campsite right on the beach. Eager to stretch our legs, we went for a short stroll along the lakeshore. Village life still goes on here, with everyone either doing the dishes, the washing, brushing their teeth or fishing in the lake. The zillions of kids kept us entertained by continuously asking us our names. As a joke, we told one of them my name was "Bollocks", which may have been a silly idea as it resulted in thousands of little ones running after us shouting "Bollocks! Bollocks!" Crying with laughter, we headed back to Fat Monkeys and witnessed the ever-so-famous red sunset over Lake Malawi with cold Carlsberg beers from the bar. A great evening and we ended up back at the bar staff's VERY cool house on the beach dancing the night away until the wee hours.

**Day 196 14/6. Fat Monkey Lodge, Cape McClear, Malawi  
14°01.46'S 34°50.50'E. Miles today 0, Total 18058**

A lazy morning eating fresh papaya on the beach. We met a great Canadian guy called Rene, who was motorbiking round the world for six years. He had just mastered the art of making bread in the ground, which was pretty impressive. Eric and Winsome, were another lovely couple who were off on a journey up the lake on the famous Ilala Ferry. Great idea actually, I wish we'd done it. A wonderful gathering of travellers here, all on their own very special journeys.

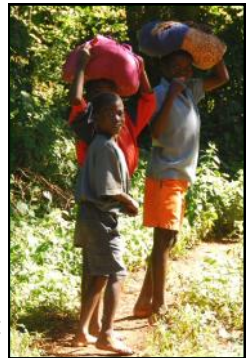
**Day 197 15/6. Trout Farm, Zomba Plateau, Malawi  
15°21.29'S 33°18.14'E. Miles today 131, Total 18189**

We are gonna have to get off this beach and do something before we too start mastering the art of underground breadmaking. Back on the road, we stopped just before Monkey Bay and bought a wooden carving of a fully kitted out Landrover 110. Rob is like a small child and very happy with his new toy. We continued south towards the old capital of Zomba and up the windy (but thankfully tarred) road to the top of the plateau. It's an incredibly rich and fertile region and you'll see locals selling the plumpiest strawberries, raspberries and gooseberries along the way. The only campsite that was running was the Trout Farm, (€3pp) a great camping spot amongst the pine trees. There's a definite nip in the air and we bought some wood for a fire to keep warm, for which we were extremely grateful. We even had to haul out all the warm clothes, which were well buried since those cold desert nights in West Africa.



**Day 198 16/6. Trout Farm, Zomba Plateau, Malawi  
15°21.29'S 33°18.14'E. Miles today 0, Total 18189**

Having woken up early, we walked up to the fancy hotel past more berry sellers, to get a map of the walks on the plateau. We were lucky, as it was pretty clear (it can get very misty here, which makes it all a bit damp and miserable) and visited a few lookout points. Amazing to watch the locals pile enormous stacks of wood onto the back of their bikes and guide them back down the incredibly steep hill. It really is unbelievable how much wood they can carry. A really nice



day in all and good for us to get some decent exercise. Later that night around the campfire, we suddenly remembered that, we still need to get visas for Mozambique, as it's not guaranteed that you can get them at all border post, so it's back to Lilongwe for us tomorrow.

# Summary of SLROC Committee Meeting.

**Date: Wednesday 2nd December 2015 – 8pm**

**Attendees** – Chris Finbow (Chair), Simon Bareham, Gareth King, Tim Alden, Andy Jeff (Minutes).

**Apologies** - Michael Whitting, Jack Myers, Pat Corps.

## Notes from previous meeting

**CF** - Proposed

**SB** - Seconded

## Actions from previous meetings

**05 Aug 15** - Site signs need amending/replacing - Ongoing (hopefully done for MPDD)

**05 Aug 15** - **PC** Need to advertise for next winch training day - **Done**

**05 Aug 15** - IOPD needs paying in December - **Done**

**02 Sep 15** - **GK** to organise another maintenance day at the end of the year. - **Ongoing**

**02 Sep 15** - Need to invite charities to Mince Pie Driving Day.

**CF** – Terry Gant (Greyhounds).

**TA** – SARS & Air Ambulance.

**AJ** – Village Hall.

**04 Nov 15** - Water bill to be paid - **Done**

**04 Nov 15** - Black course needs to be monitored for damage - **Done**

**04 Nov 15** - New club shirts required **CF** organising.

**02 Dec 15** - **CF** to confirm MPDD Catering.

**02 Dec 15** - **GK** to co-ordinate with DR for MPDD

**02 Dec 15** - **AJ** to arrange tables for MPDD

**02 Dec 15** - **CF** to mail **AJ** PDF of shows and events with CoC's

**02 Dec 15** - **TA** – contact BBC Suffolk/Heart/Town 102 regarding MPDD

**02 Dec 15** - **SB** to send membership list to **TA** for email addresses.

**02 Dec 15** - **HJ** MSA calendar needs populating

**02 Dec 15** - **TA** to source club stickers as replacements.

## Calendar Items

Agree club calendar in December issue of Nooze - **Done**

Invite charities to MPDD. Remember to get giant charity cheques - **Done**

## Membership

344 Total

211 Full

93 Joint

41 Junior

## Finance Report

Report from MW in his absence is as follows:

£18,265.96 in the bank

£4,043.13 is ours

£12,991.33 is for charities

£1,231.50 is from the factory tour.

Public liability insurance renewed.

**AJ** should have a cheque for **SB** to reimburse the minibus and fuel costs.

**AJ** should also have a cheque for payment for the water meter. The site rent cheque hasn't been cashed yet.

3 novelty cheques are available for charities, and spares have been requested. Still waiting for Land Rover to provide invoice so the tour fee can be paid.

### **Club Site**

Marshals still congregating between the black and yellow courses. The spread of marshals needs to be monitored for the MPDD.

Maintenance day organisation still in progress. Some small jobs will be completed perhaps boxing day in preparation for MPDD. **GK** to contact and co-ordinate with **DR** for MPDD arrangements. **AJ** to ask for tables from Village hall.

### **Website & Social Media**

**AJ** - Many photo's uploaded to galleries, many more to do also.

### **Nooze**

220 copies ordered for distribution in November.

30 PDF customers receiving e-mailed Nooze.

The order count is reduced for Feb not Jan as it's end of Jan when membership is sorted out.

As ever need new articles and all items need to be in prior to Dec 15th AT THE LATEST for Jan Nooze.

Nooze archive on line is up do date.

### **Shows & Events**

Goodrich Park are not responding to requests for information, this show may not be happening.

Long Melford is currently on the back burner whilst organisation is figured out.

Suffolk Show contacts will be renewed in the new year after organisational changes there.

Henham Show is most likely returning to the Henham Park site this year. This is to be confirmed.

**TA** is currently reviewing banners for the upcoming shows in 2016 in order to make things more obvious about who we support. Sizes and content were mentioned and final banners are to be sorted.

Discussion of charities nominated so far. Nominations are still open and final decisions will be made before shows and AGM in March.

### **Public relations**

Invited to East Anglian Air Ambulance new office opening but unable to attend.

Considering mailshots to club members for club events. This would be an opt out service if it were to happen at all.

**TA** - contact BBC Suffolk/Heart/Town102 regarding MPDD and that we are handing out raised funds at that event. This gives locals who listen to radio a chance to find out what we did with money raised and may help future donation levels.

## **Safety and Training**

No Report.

Numbers of marshals attending driving days and trials and shows (but not Suffolk Show) is low. No event has had to be cancelled, but considering the number of trained marshals this situation is not great. It seems the same faces are doing all the marshalling all the time. This will inevitably lead to marshals dropping off the 'current' list.

It's often the situation that at trials, many marshals are competing, however not everyone helping at trials need to be trained marshals.

There are some people who want to become marshals, they may bolster numbers.

## **Competitions**

Recent winch trial went very well, 11 entries (6 new members).

The question of day memberships for trials away from Newbourne was asked recently. This has been tabled before, but has been asked again! The concept of one day membership for trials only that are away from Newbourne and are still Land Rover only will be tabled for discussion at a future meeting for a majority committee decision. This has to be member led if it is to be discussed.

MSA calendar needs populating

## **Correspondence**

None

## **Club shop**

MW to speak to DM about club shop accounts coming under finance umbrella

## **IOPD**

All sorted and up to date.

We are due for an inspection which will most likely be in the coming year.

## **Chat from the chair discussion**

Prompt for trained marshals to attend events.

## **Any other business**

**SB** - Running low on club stickers that go out in membership packs. TA to look into it.

**SB** - might be worth looking into club grille badges. **AJ** - knows of a supplier and will send link through.

Discussion about getting **MW** (treasurer) as a club cheque signatory.

**Next meeting to be held on Wednesday 6th Jan 2015 at the club site.**

# **SLROC CLUB SHOP**

## **Clothing, Stickers, etc**

**All clothing is available to order in a range of sizes and colours,  
just ask!**

<b>T-Shirt</b>	<b>£10.00</b>
<b>Polo Shirt</b>	<b>£13.00</b>
<b>Sweatshirt</b>	<b>£16.00</b>
<b>Hoodie</b>	<b>£16.00</b>
<b>Rugby Shirt</b>	<b>£24.50</b>
<b>Fleece</b>	<b>£20.00</b>
<b>Bomber Jacket</b>	<b>£32.00</b>
<b>Overalls</b>	<b>£34.00</b>
<b>Children's T-Shirt</b>	<b>£9.50</b>
<b>Children's Polo Shirt</b>	<b>£11.50</b>
<b>Children's Fleece</b>	<b>£19.50</b>
<b>Children's Polo Hoodie</b>	<b>£14.00</b>
<b>Children's Bomber Jacket</b>	<b>£29.00</b>
<b>Baseball Cap</b>	<b>£10.00</b>
<b>Embroidered Hat</b>	<b>£10.00</b>
<b>Door / Panel Sticker</b>	<b>£4.00</b>
<b>Small Sticker</b>	<b>£1.00</b>
<b>Window Sticker</b>	<b>£1.00</b>
<b>www.slroc.uk.com Sticker (Black, Orange, Silver, Yellow, Red, Blue &amp; White)</b>	<b>£2.00</b>
<b>Cap Light</b>	<b>£3.00</b>
<b>Childs Hi-Viz Vest</b>	<b>£2.50</b>

Prices are correct at time of going to print but may be subject to change.

# SLROC CLUB SHOP

## Recovery Gear

<b>2M Bridle</b>	<b>£21.00</b>
<b>5M Rope</b>	<b>£30.00</b>
<b>7M Rope</b>	<b>£35.00</b>
<b>9M Rope</b>	<b>£40.00</b>
<b>Bow Shackle</b>	<b>£8.00</b>
<b>'Jate' type Recovery Ring</b>	<b>£15 .00</b>
<b>Battery Clamp</b>	<b>£6.00</b>
<b>Rigger Gloves (1 pair)</b>	<b>£1.00</b>

**Prices correct at time of going to print but may be subject to change.**

The Club Shop is at most events, and items are also available from:

**Dave Marriott: 07891 917056 - Email: clubshop@slroc.uk.com**

Please get in touch if you wish to collect items from a Show.  
Items will soon be featured on our web site at **www.slroc.uk.com**



*General Repairs  
Servicing & MOT Prep  
Land Rover Diagnostics  
Performance Upgrades  
Chassis Replacement*

## **LAND ROVER & 4x4 SPECIALISTS**

*Repairs, Spares & Sales*

Unit 2 Moores Yard  
Main Road Benhall  
Saxmundham Suffolk  
IP17 1HB

( 01728) 604615  
info@offroadrovers.com  
www.offroadrovers.co.uk

# CLUB CONTACTS

**CLUB PRESIDENT**

Ralph Lambourne



**CHAIRMAN**

Chris Finbow  
07771 588298  
chair@slroc.uk.com



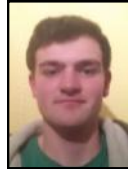
**CLUB SECRETARY**

Jack Myers  
secretary@slroc.uk.com



**TREASURER**

Michael Whitting  
treasurer@slroc.uk.com



**VICE CHAIR & CLUB MAGAZINE**

Andy Jeff  
07801 470055  
vicechair@slroc.uk.com



**MEMBERSHIP SECRETARY**

Si Bareham  
membership@slroc.uk.com



**OFF ROAD SECRETARY**

Gareth King  
offroadsec@slroc.uk.com





# CLUB CONTACTS

## **SAFETY & TRAINING OFFICER**

Pat Corps  
07887 500799  
safety@slroc.uk.com



## **PR & SHOW CO-ORDINATOR**

Tim Alden  
pr@slroc.uk.com



## **COMPETITION SECRETARY**

Hannah Jeff  
compsec@slroc.uk.com



## **CLUB SHOP**

Dave Marriott  
07891 917056  
clubshop@slroc.uk.com



**Please note:** Some of the Committee Members have requested that details of their addresses are not published within the newsletter for personal reasons. Please do not let this put you off contacting any of the Committee, they will be only too glad to receive phone calls (as long as they are at a reasonable time of day, say **no later than 9:30pm**).

If you have any mail you wish to pass on to a Committee Member then it can be sent via any of the published addresses above. The Committee also respects the privacy of each and every Club member, and to that end, we do not give out details of Club members to any other organisation.

## **Important Information**

On entering the access lane to the site, please adhere to the **5mph** speed limit. Failure to do so, may result in removal from the site with no refund of fees.

**If only watching or socialising, please turn right to park in the rear car park. Do not park in the main car park or proceed to signing-on/scrutineering.**

**Trailers to be parked in designated area in main parking area.**

If taking part in the event please stop at the signing-on hut first:

For insurance purposes, membership cards **must** be available for inspection at **any** club driving event, if requested. Only members holding a full UK driving licence\* and who have **signed on**, may drive at any club event. \*With the exception of 'Tyro Trials' where Supplementary Regulations may allow drivers of 13 years and upwards.

Then continue to scrutineering: **All** vehicles must be scrutineered prior to driving onto the courses. Minimum requirements for recovery points are two-points at the front with bridle, and manufacturer's tow hitch at the rear or two 'Jates' and bridle. Please fit bridle before scrutineering.

Seat belts (inc. lap-belts) must be fitted and worn by all occupants.

**(No belt, no ride.** This is for your own safety).

Once signed-on and scrutineered, you may continue to the parking area.

**All** loose items must be removed from the vehicle before going on the courses. Vehicles will be checked for these items and stickers.

### **15 mph site speed limit**

No driving along the footpath at the bottom of the site, except at the designated crossing point for access to and from the Woodland Course.

**All recoveries under the supervision, and at the discretion of a Marshal. All facets of winching operations may only be carried out by persons aged 18 and over, including rigging.**

**Pedestrians must not walk on the courses, only the access roads- this is for your own safety.**

**Children (under 16's) remain the sole responsibility of parents/carers at all times. Children must wear a Hi-Viz vest whilst outside a vehicle in all areas. Children must be accompanied by an adult in all active vehicle movement areas.**

Dogs must be kept on leads and under proper control at all times.

It is the responsibility of the owner to clear up after your dog(s).

**Do not drive roped-off areas.**

**Do not remove ropes or posts unless instructed by a Marshal.**

Strictly no drinking and driving. No motorcycles or quad bikes.

No tractor, Implement or overly-aggressive treaded tyres.

Please take all your litter home with you.

**The Marshal's decision is final**

# Land Rover Insurance



Benefits available include:

- Agreed Value
- Club Member Discounts
- Limited Mileage Discounts
- FREE Legal Cover
- Off Road & Green Lane Cover
- Breakdown Cover

## Specialist Car Insurance

Adrian Flux know how much you love your Land Rover, which is why we are dedicated to finding you an insurance policy tailored to your own personal requirements and driving history. Call us today for a free, no obligation quote.

**0800 089 0035**  
**adrianflux.co.uk**

Authorised & regulated by the Financial Conduct Authority



# DEMAND ENGINEERING Ltd.

demandengineering.co.uk

01473 890 820



**Custom Hand Crafted Stainless Steel  
Exhaust Systems For Any Vehicle**

**DPF Removal, ECU Remapping And Tuning**