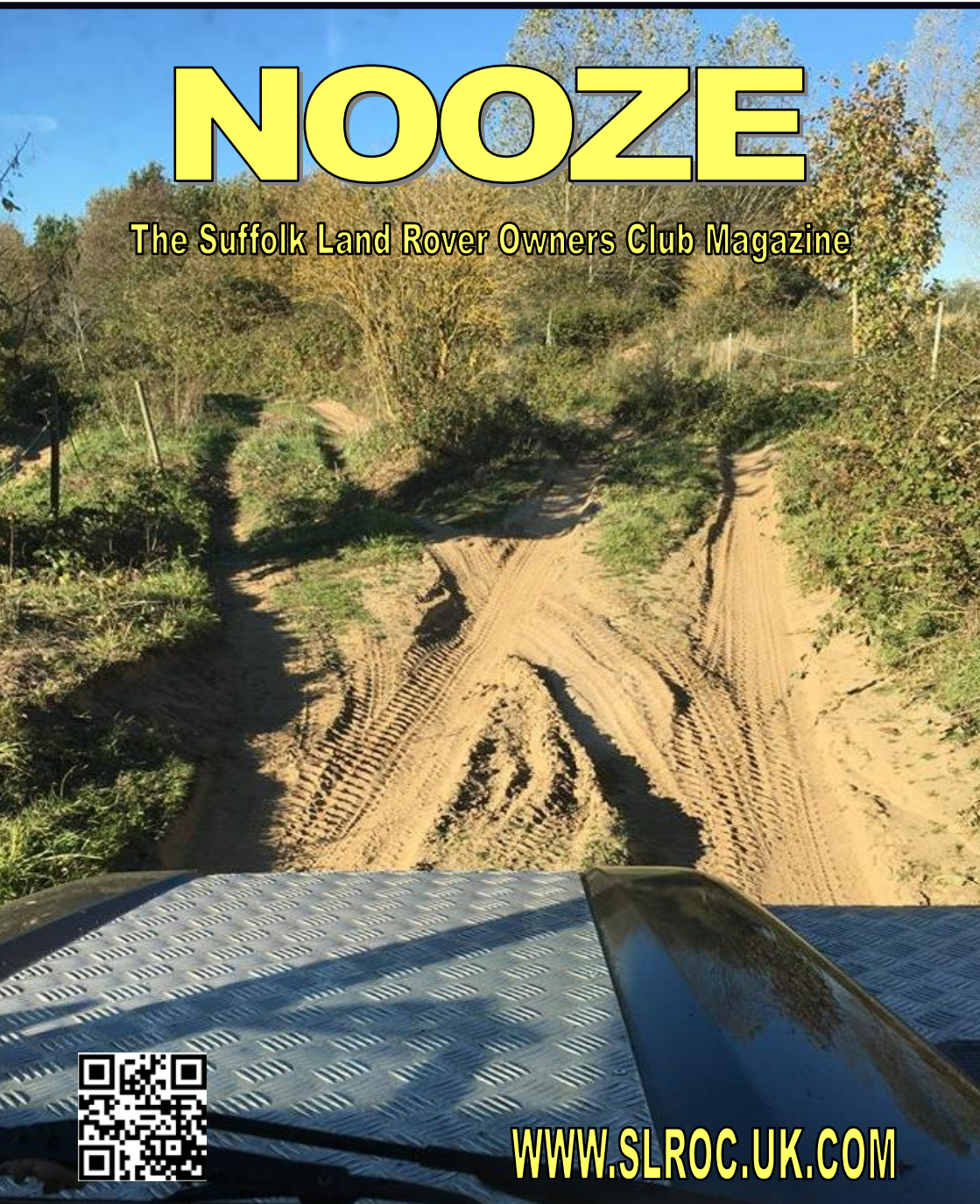




**January 2019**

# **NOOZE**

**The Suffolk Land Rover Owners Club Magazine**



**[WWW.SLROC.UK.COM](http://WWW.SLROC.UK.COM)**

# FOR ALL YOUR LAND ROVER SERVICING NEEDS



- Fully Trained Land Rover Technicians
- The latest technology IDS & SDD diagnostics and repairs
- Competitive pricing with no hidden extras

## LINDACRE LAND ROVER SERVICE CENTRE

2 Farthing Road, Sproughton Industrial Estate, Ipswich, IP1 5AP  
Tel 44 (0)1473 461 751. Fax 44 (0)1473 744 048.

LINDACRE IPSWICH



GO BEYOND

# **Nooze News!**

## **NOOZE**

is the "mouthpiece" of the  
**Suffolk Land Rover  
Owners Club**

SLROC welcomes any  
comments, contributions or  
complaints from our members.  
Send your contributions to:

**Jane Gilmore**

Meadow End, Hoxne Road  
Denham, IP21 5DF  
Tel: 07793047986

Or email me at:

**nooze@slroc.uk.com**

### **COPY DEADLINE:**

**15th** of the preceding  
month at the very latest  
please.

SLROC uses CB Channel 7

The opinions expressed in this  
publication are not necessarily  
those of the Editor, Committee,  
Club or Company.

Neither can responsibility be  
taken for the accuracy or  
otherwise of articles or  
advertisements placed.

All logo's, legends and artwork  
remain the property of SLROC  
and may not be reproduced  
without permission from the  
Committee.

**©2002-2018 Suffolk Land  
Rover Owners Club Ltd**

We would like to thank  
**BETTAPRINT Woodbridge Ltd**  
For their help in producing  
Nooze

SLROC Supports both national  
and local 4x4 response groups

### **Cover Picture**

Left or Right?

Welcome 2019, that came round quick again.  
Happy New Year to you and all your families.

Lots of planning and changes for the new year  
ahead, with The AGM in February this year. You will  
find all the details for this and positions vacant in the  
advert. There is also an opportunity for you to bring  
other business up at this meeting if you are a  
current member.

This brings me nicely on to the final reminder for  
renewing your membership. Again there is the last  
page tear out of this month's nooze for the  
membership renewal form, which can be completed  
and either handed in to membership secretary  
before the end of January or posted to the address  
advertised.

In October the committee called a Special Meeting,  
to discuss lack of current support with help to run  
the club. It was a successful meeting where we  
found several members on the day willing to help  
and a new idea of a 'jobs needed' notice board to go  
out at driving days, to encourage volunteers to come  
forward. The minutes for this meeting can be found  
in this edition for you all to read and if anyone would  
like to extend that support, then please talk to one  
of the current committee members.

All the details of last years charity funds and where  
the monies have gone, can be found in an article  
from Andy. What a fantastic year we had and superb  
sum of money raised.

The start of this years event are just round the  
corner, with the brilliant Day into Night trial on the  
Saturday, followed by the TYRO trial on the Sunday .  
Please see adverts in Nooze and look out for adverts  
and pre booking guidance on the forum or  
Facebook. Both of these events are great fun and it  
makes for a fabulous weekend of Land Rover FUN,  
but wrap up warm!

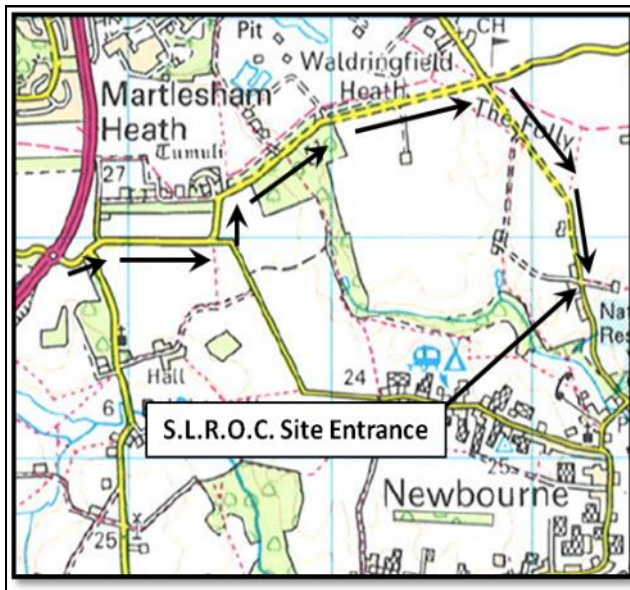
We have an advert again for Bearmach, offering club  
members a discount on parts and an opportunity for  
the club to receive money from your transaction, but  
you must use the code provided.

Happy Reading...

Jane



# Directions to the Newbourne club site



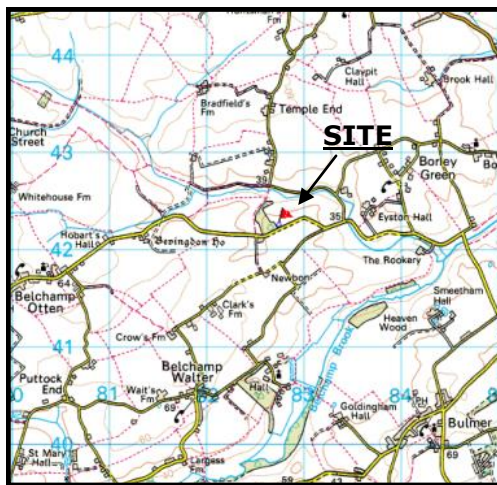
The club has its very own off-road driving site which we use monthly for weekend events, and competitions. The site is situated to the east of Ipswich, near to the village of Newbourne. Strict rules must be adhered to when using the site, to protect the safety of all users. Please keep your speed down around the village, and especially on the access track which has a 5mph limit. See you there!

## Badwell Ash



OS sheet 155 grid ref TL 000 693

## Snugg's Pit



OS sheet 155 grid ref TL 826 421

## Chat From the Chair

Happy New Year one and all and welcome to another year with the Suffolk Land Rover Owners Club.

I guess you're all familiar with the thought that this gets written in the middle of December ready for and early print run due to the Christmas shutdown. Normally reminders of be prepared for the bad weather and take care in the snow are the order of the day, but whilst it's chilling off a bit at this end of the year, you couldn't exactly call it 'cold' and there's not yet any sign of snow in any of the forecasts for our area. Perhaps by the time you read this there may be a bit of a change, but more often than not, it seems that these days, the bad weather holds off until a couple of months into the new year. It doesn't mean we can be complacent though, so just like the Scouts, always be prepared and not only for yourself, but also be prepared to help others if the weather does turn 'white'.

Of course, it's a time to look forward to what the new year might bring us and for the club there is already a great deal of planning going into the events for 2019. I'm really pleased to see that the recent successes that we've enjoyed at various shows around the county aren't going unnoticed and we're getting to the point where we're getting quite a number of requests to attend events and provide our own brand of 4x4 fun. With the added bonus of raising cash for our nominated charities, we're fast becoming an attractive proposition to many organisations. I can see that this year there are already so many requests that I know we'll have to pick and choose what we are and aren't able to do ensuring that we don't spread ourselves too thin. It's a great testament to all those that put lots of effort into our fund raising at whatever level. But we're not just a 'show' club and as ever the calendar is also full of driving days, camp overs, competitions and training events all aimed at making the Suffolk Land Rover Owners Club something great to be a part of.

Of course this all takes a lot of organisation and my regular request at this time of year is the shout out for people to help with the running of the club. Either at specific events, where we always need marshals and organisers, or for those that want to get a bit more involved with the day to day running of the club, there's always space on the club committee. Jobs regularly come up and we gratefully accept the help of those who want to give back just that little bit extra to the organisation they enjoy.

Once more, here's hoping the new year brings new things and perhaps some fun in the snow and if you want to get involved, just chat to anyone on the club committee to find out what needs doing or check out the 'Jobs' board that we now regularly have at driving days telling all where the immediate needs are.

All the best...

Andy.

# **EVENTS PLANNER 2019**

This planner is intended as a guide and as such any event may be subject to change.

<u><b>When</b></u>	<u><b>Club Event</b></u>	<u><b>Where</b></u>	<u><b>Org</b></u>
Jan 20 <sup>th</sup>	Driving day	Newbourne	TBC
<b>Feb 2<sup>nd</sup></b>	<b>Day into Night CCVT &amp; Camp Over</b>	<b>Newbourne</b>	<b>TBC</b>
<b>Feb 3<sup>rd</sup></b>	<b>Tyro CCVT</b>	<b>Newbourne</b>	<b>TBC</b>
Feb 17 <sup>th</sup>	Driving Day & AGM (12.30—1:30)	Newbourne	A Jeff
<b>Feb 24<sup>th</sup></b>	<b>Single Vehicle Winch Trial</b>	<b>Snuggs Pit</b>	<b>TBC</b>
March 16 <sup>th</sup>	Maintenance Day	Newbourne	TBC
March 17 <sup>th</sup>	Driving Day	Newbourne	G White
<b>March 24<sup>th</sup></b>	<b>Interclub CCVT</b>	<b>Burgh Castle</b>	<b>TBC</b>
<b>March 31<sup>st</sup></b>	<b>CCVT</b>	<b>Badwell Ash</b>	M. Whitting
April 27 <sup>th</sup>	1 <sup>st</sup> Training Day & Camp Over	Newbourne	P. Corps
April 28 <sup>th</sup>	Driving Day & Auto jumble	Newbourne	R Gilmore
<b>May 5<sup>th</sup></b>	<b>Interclub CCVT</b>	<b>Pentley Lake</b>	<b>TBC</b>
<b>May 18<sup>th</sup></b>	<b>Novice Winch Trial &amp; Camp Over</b>	<b>Newbourne</b>	<b>TBC</b>
May 19 <sup>th</sup>	Driving Day	Newbourne	G White
June 22 <sup>nd</sup>	2 <sup>nd</sup> Training Day & Camp Over	Newbourne	TBC
June 23 <sup>rd</sup>	Driving Day	Newbourne	TBC
<b>July 13<sup>th</sup></b>	<b>Tyro CCVT &amp; camp over</b>	<b>Snuggs Pit</b>	R Gilmore
<b>July 14<sup>th</sup></b>	<b>Punch Hunt</b>	<b>Snuggs pit</b>	R Gilmore
July 20 <sup>th</sup>	Maintenance day & Camp Over	Newbourne	TBC
July 21 <sup>st</sup>	Driving Day	Newbourne	TBC
<b>Sept 1<sup>st</sup></b>	<b>CCVT &amp; Interclub</b>	<b>Badwell Ash</b>	M. Whitting
Sept 8 <sup>th</sup>	3rd Training Day (Novice Driver)	Newbourne	P. Corps
<b>Sept 21<sup>st</sup></b>	<b>Tyro CCVT &amp; Camp Over</b>	<b>Newbourne</b>	S. Bareham
Sept 22 <sup>nd</sup>	Driving Day	Newbourne	TBC
<b>Oct 19<sup>th</sup></b>	<b>"Ladies/Junior" Tyro CCVT &amp; Camp Over</b>	<b>Newbourne</b>	C. Finbow
Oct 20 <sup>th</sup>	Driving Day & Auto Jumble	Newbourne	C. Finbow
<b>Nov 3<sup>rd</sup></b>	<b>Single Vehicle Winch trial</b>	<b>Snuggs Pit</b>	R Lambourne
Nov 17 <sup>th</sup>	Children in Need Driving Day	Newbourne	A. Jeff
<b>Nov 24<sup>th</sup></b>	<b>CCVT</b>	<b>Snuggs Pit</b>	A cutting
Dec 29th	Mince Pie Driving Day	Newbourne	G White

**\*\*\*Events requiring Pre-Booking are in bold type\*\*\***

Driving Days - **£10\*** - Driving Day Junior Afternoon **£5**

CCVT and Tyro Trials - still only **£15 Pre-Booked**

CCVT and Tyro Trial - Arrive & Drive (where permitted) **£20**

# **SHOW PLANNER 2019**

This planner is intended as a guide and as such any event may be subject to change.

<b><u>When</u></b>	<b><u>Show</u></b>	<b><u>Where</u></b>	<b><u>CoC / Org</u></b>
May 29 <sup>th</sup> —30 <sup>th</sup>	Suffolk Show	Trinity Park	C. Finbow
June 15 <sup>th</sup> —16 <sup>th</sup>	Fathers Day Motor Fest	Chelmsford	T Alden
June 22 <sup>nd</sup> —23 <sup>rd</sup>	Heveningham Country Fair	Heveningham	T Alden
Aug 3 <sup>rd</sup> —4 <sup>th</sup>	Festival of Wheels	Trinity Park	T Alden
Aug 11 <sup>th</sup>	Club Open Day	Newbourne	J&R Gilmore
Sept 14 <sup>th</sup> —15 <sup>th</sup>	Henham Steam Rally	Henham Park	R. Heather
Sept 14 <sup>th</sup> —15 <sup>th</sup>	LRO Show	Peterborough	TBC
Sept 22 <sup>nd</sup>	Warren Classic Car Show	Danbury	TBC

## **Final Notice**

### **2019 Membership Renewals**

**This is your final reminder for 2019 renewals**

**The membership team will be at the club site for the  
January 20<sup>th</sup> driving day**

- Standard full membership is **£30**;
- Joint members aged 17+ living at the same address **£10**
- Junior members free of charge until the age of 17

***£5 Re-joining fee applies from 1<sup>st</sup> February***

Happy New Year

Please Support Our Advertisers As They Support Us!



**30 YEARS  
EXPERIENCE**

## **LAND ROVER SPECIALISTS**

- ✓ *Service*
- ✓ *Maintenance*
- ✓ *Parts*
- ✓ *Accessories*

**50% cheaper than the main dealer plus great  
discounts for club members!**

**WWW.JSF4X4.CO.UK**

**01206 396644**

Unit 1, Causeway End Industrial Estate, Lawford,  
Manningtree, CO11 2LH

Please mention 'Nooze' when replying to adverts





Please send Membership renewals to the address shown below and not the address advertised Sept/Oct Nooze. Thanks

Jane Bareham  
20 Camellia Crescent  
Clacton-On-Sea  
Essex  
CO16 7ET

# LAND ROVER SPECIALIST



Servicing, Repairs and MOT work  
Vehicle Preparation

Autologic Diagnostic

Visionaire Tracking Systems

10% Discount for club Members ✳

**\* On Labour Only**

**SWB, Mutford Garage, Nr Beccles. NR34 7UL**



# **Notice of Annual General Meeting**

Notice is hereby given that the Annual General Meeting of the Suffolk Land Rovers Owners Club Limited will take place on Sunday 17<sup>th</sup> February 2018 at the Newbourne SLROC Site commencing at 12.30pm to transact the following business

Agenda for 2019 Annual General Meeting  
To be held 12.30pm Sunday 17<sup>th</sup> February

**1. Apologies for absence**

**2. Minutes of 2018 Annual General Meeting**

**3. Chair's Report**

**4. Membership Report**

**5. Treasurer's Report**

**6. Election of Officers** (who serve a 3 year term)

Chairman - Vacant

Vice Chair - Richard Gilmore (re-election due 2021)

Treasurer - Michael Whitting (re-election due 2021)

Secretary - Graham White (re-election due 2020)

**7. Election of Committee members.**

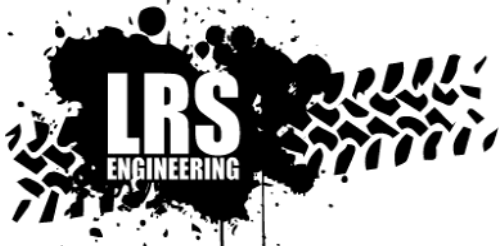
Nominations for any of the above posts to be sent to the Registered Address or via email to [secretary@slroc.uk.com](mailto:secretary@slroc.uk.com) by 28<sup>th</sup> January 2019.

**8. Any Other Business**

All items for AOB to be sent to the Registered Address or via email to [secretary@slroc.uk.com](mailto:secretary@slroc.uk.com) by 28<sup>th</sup> January 2019

**Note: Only Members whose subscriptions are up to date at the time of the AGM will be entitled to attend or vote. Please bring your membership card with you.**

**Registered Address:** c/o M.Whitting, 53 Suffolk Drive, Rendlesham, Woodbridge, IP12 2TN



**Unit 6 Westmead,  
Hedingham Road  
Gosfield, Nr Halstead  
Essex CO9 1UP  
01787 469553**

**www.lrsengineering.co.uk**



**Bearmach**  
LAND ROVER PARTS



**B WILDBEAR**

**AllMakes4x4**  
Quality, Value and Performance

**Terrafirm**  
Serious 4x4 Accessories

*Servicing, Repairs, Diagnostics, Programming,  
Genuine & Non Genuine Parts Supplied  
Registered To Land Rover Online Service System*



Find us on:  
**facebook.**

# **Charities – How did we do in 2018**

Moving into 2018 the most obvious thing we learnt from 2017 was that it is possible to support too many 'main' charities. It's great to share out our charity pot a little further, but it's a heck of a lot of work organising and allowing for many different groups. So, in 2018 we took a conscious decision to only support two main charities, Bike Active and Parkinson's UK giving them both equal opportunities to help and also benefit from our efforts.

In 2017 we did pretty well raising more than £14,000 but not quite beating the total raised in 2016, but as 2018 opened up it became clear that we may have one of our best years to date. We were again asked to attend the Rock Barracks open day that was a great success previously and we were also invited to a new show at trinity park, the Festival of Wheels, a new event not held before and so a bit of an unknown.

The year started well, and the Suffolk Show was again a fantastic event. The problem here is that we're all but maxed out at the Suffolk Show and whilst we can match previous years, beating it is hard work. It's a great event and it's hard work but it always sets us off to a great start. However, we were brought down to earth at the Suffolk day event at the Suffolk Food Hall where we raised a massive £12! A lot of effort for not a lot of gain. The rest of the year however went perfectly to plan and whilst Rock Barracks was only half the success that it had previously been, the Festival of Wheels was like the Suffolk Show Mk. 2 adding a whopping £4,500 to our annual total. At the end of the year, I'm staggered to say that the marvellous efforts of the club event organisers, drivers, marshals, loaders, unloaders, charity helpers and anyone else I've missed off the list raised just over £18,500 – WOW!

Again, throughout the year, the support received from our Charities was great! Coming to events where we were offering rides and helping us not only to promote their causes but also very often helping to load, unload and promote what we were trying to achieve, is just what we needed! So how was the pot apportioned? Some of the money we raise goes directly back to the event organisers charities and the rest is split between the nominated charities we support, and this year's split is as follows:

Bike Active	£8000
Parkinson's UK (Suffolk)	£8000
Suffolk Show Charities	£1000
Hevingham Charities	£814
Henham Charities	£250
Suffolk Food Hall Charities	£160
Newbourne Village Hall	£300

I'd like to add a personal thank you to all who helped in whatever way to raise this fantastic amount of money. I have no idea how we'll manage to match this in 2019 but here's hoping we can get at least close to this achievement. The announcement of the 2019 charities will be at the club AGM in February!

All the best, Andy





# Mansfield 4x4

BURY ST. EDMUNDS LTD

01284 767174 [www.mansfield4x4burystedmunds.com](http://www.mansfield4x4burystedmunds.com)

**Parts, Accessories, Service, Repair and Diagnostic Testing  
for all models of Land Rover and Range Rover**



## MOT Testing for all cars

3D wheel alignment available



**Winch mounts • Side bars • Underbody protection • Exhausts  
Engine and Clutch upgrades • Wheels and Tyres**

**And much more....**

Email: [info@mansfield4x4.net](mailto:info@mansfield4x4.net)

Unit A1 Chase Road, Northern Way Ind. Est., Bury St Edmunds, Suffolk, IP32 6NT



**AllMakes4x4**  
Quality, Value and Performance

**TerraFirma**  
Service 4x4 Accessories

**ODYSSEY**  
THE EXTREME BATTERY

**DRAPER**

**GS**

**GS**

**WARN**

**BRITPART**

**Bearmach**

**EDGE**

**LightFORCE**  
PERFORMANCE GRADE

**GODWINCH.COM**

**SUPERWINCH**



**Mansfield 4x4**  
BURY ST. EDMUNDS LTD

**01284 767174**

[www.mansfield4x4burystedmunds.com](http://www.mansfield4x4burystedmunds.com)

***Free air conditioning  
efficiency report***

***Free 4 wheel alignment check  
with a printed report.***

***Air conditioning regas for  
R134 systems £45 + vat***

***MOT test class 4 £39.95***

***MOT test class 7 £47.95***

***Parts, Accessories, Service, Repair and Diagnostic Testing  
for all models of Land Rover and Range Rover***

***Email: [info@mansfield4x4.net](mailto:info@mansfield4x4.net)***

Unit A1 Chase Road, Northern Way Ind. Est., Bury St Edmunds, Suffolk, IP32 6NT



## **Important Information**

On entering the access lane to the site, please adhere to the **5mph** speed limit. Failure to do so, may result in removal from the site with no refund of fees.

**If only watching or socialising, please turn right to park in the rear car park. Do not park in the main car park or proceed to signing-on/scrutineering.**

**Trailers to be parked in designated area in main parking area.**

If taking part in the event please stop at the signing-on hut first: For insurance purposes, membership cards **must** be available for inspection at **any** club driving event, if requested. Only members holding a full UK driving licence\* and who have **signed on**, may drive at any club event. \*With the exception of 'Tyro Trials' where Supplementary Regulations may allow drivers of 13 years and upwards.

Then continue to scrutineering: **All** vehicles must be scrutineered prior to driving onto the courses. Minimum requirements for recovery points are two -points at the front with bridle, and manufacturer's tow hitch at the rear or two 'Jates' and bridle. **Please fit bridle before scrutineering.**

Seat belts (inc. lap-belts) must be fitted and worn by all occupants.

**(No belt, no ride.** This is for your own safety).

Once signed-on and scrutineered, you may continue to the parking area.

**All** loose items must be removed from the vehicle before going on the courses. Vehicles will be checked for these items and stickers.

### **15 mph site speed limit**

No driving along the footpath at the bottom of the site, except at the designated crossing point for access to and from the Woodland Course.

**All recoveries under the supervision, and at the discretion of a Marshal. All facets of winching operations may only be carried out by persons aged 18 and over, including rigging.**

**Pedestrians must not walk on the courses, only the access roads- this is for your own safety.**

**Children (under 16's) remain the sole responsibility of parents/carers at all times. Children must wear a Hi-Viz vest whilst outside a vehicle in all areas. Children must be accompanied by an adult in all active vehicle movement areas.**

Dogs must be kept on leads and under proper control at all times.

It is the responsibility of the owner to clear up after your dog(s).

**Do not drive roped-off areas.**

**Do not remove ropes or posts unless instructed by a Marshal.**

Strictly no drinking and driving. No motorcycles or quad bikes.

No tractor, Implement or overly-aggressive treaded tyres.

Please take all your litter home with you.

**The Marshal's decision is final**



# HILLCREST

VEHICLE SOLUTIONS

LAND ROVER SPECIALISTS

- **Specialist Repairs** requiring body removal
- **Chassis repairs** and replacement
- **Engine conversions** and replacement
- **Rebuilds**
  
- **MOT**  
Discount if booked with a service
- **Servicing**  
We carry out servicing to manufacturers specifications
- **Repairs**  
All general repairs
- **Diagnostics**  
Using the latest diagnostic technology
- **All makes and models welcome**  
Modern and classic

**All mechanical work guaranteed for  
12 months or 12,000 miles**

Hillcrest Vehicle Solutions Ltd, Hillcrest Garage, Cratfield Road,  
Huntingfield, Halesworth, Suffolk, IP19 0QB

Tel: 01986 798668 Email: [info@hillcrestvs.co.uk](mailto:info@hillcrestvs.co.uk)

Please call Jono Rout or Sandra French  
for a no obligation quote or friendly advice

# Committee Meeting Minutes

Special Meeting held Sunday 21st October 2018, 12.40pm  
Minutes prepared by Graham White

**Present** Andy Jeff (AJ) (Chair), Graham White (GW), Tim Alden (TA),  
Richard Gilmore (RG), Jane Gilmore(JG)Pat Corps (PC), Michael  
Whitting (MW)

**Apologies** All present

AJ Opened the meeting by saying that it had been agreed at the October Committee meeting that a special meeting should take place to discuss the issue of insufficient volunteers coming forward to help manage the Club. The loss of Committee members, the lack of Marshals and general lack of volunteers to do the various jobs that needs doing is putting the future of the Club in jeopardy.

A discussion followed with the Committee members sharing their views, as a result the following actions were agreed.

- Every effort should be made to make members aware of the work that needs to be done through improved communication.
- A board listing the outstanding jobs will be displayed at the Club during driving days
- Nooze would continue to be issued for two months as Nooze 'Lite' and Quarterly as a full publication. Nooze 'Lite' would be the "bare bones", in a form that requires very little publishing effort, consisting of Events Calendar, Advertisements, meeting minutes. The quarterly publication would include the message for the Chair and other editorials and photos, etc.
- JG agreed to continue with Nooze in the above form only on the basis that her current computing difficulties are resolved and until someone else is found to take over.
- Members will be encouraged to get involved on an ad-hoc basis without the need to become Committee members.
- Members will also be encouraged to become Committee members where the emphasis will be of the job and providing a short report rather than attending each meeting.
- As and when members volunteer their contribution needs to be recognised. Not by money or handout but a mention in Nooze.

Following the close of the meeting AJ addressed the members at the Driving Day, asking for volunteers and showing members the Jobs list board.

Meeting closed 13.15

**Minutes approved**

..... **A.Jeff 2/11/18**



# Day Into Night Trial

**2<sup>nd</sup> February 2019**

If you thought that trialling was part of the 'dark arts' then on this occasion you'd be right!

Starting in the afternoon and running into the night, the section which may have



seemed like a breeze in daylight is a whole new challenge under the cover of darkness!

Scrutineering from Noon for a 13:00hrs start, expected finish time around 20:00hrs.

Please Note: One extra set of driving lights may be used which must be fitted below the top edge of the bulkhead. For safety reasons, no roof mounted lights may be used.



Please remember it's cheaper to pre-book than to 'arrive and drive' on the day.

Pre-booked entrants fee £15  
- Arrive and drive £20 and as usual we need a minimum of 5 entrants to run this event so please book early to ensure it goes ahead.

Pre-booking will be available via the forum, Facebook or email  
compsec@slroc.uk.com.





Est. UK1988  
**Bearmach**  
PARTS FOR LAND ROVERS

## *Bearmach Cashback Club*

---

Earn money for your club every time you order your parts & accessories from Bearmach.com!

Get 10% off every time you order online, using the discount code below. The club will receive 5% of your order value as cashback too.

Everyone benefits!

Don't forget to use the Select 4 Collect delivery option for free delivery.



[www.bearmach.com](http://www.bearmach.com)

Use discount code - **SLROC10**

# HWB AUTOMOTIVE

INDEPENDENT LAND ROVERS • CLASSIC & SPORTS PRESTIGE SPECIALISTS



• LAND ROVER SPECIALISTS

• LANDROVER MASTER TECHNICIAN,  
OVER 10 YEARS EXPERIENCE

• ALL MAKES OF SPORTS, CLASSIC &  
PRESTIGE CARS SERVICED & REPAIRED

• FULL LAND ROVER DIAGNOSTICS

• PERFORMANCE UPGRADES & BESPOKE  
MODIFICATIONS UNDERTAKEN

• RESTORATION & RECOMMISSION WORK

• MOT PREPARATION & MOT'S

• AIR-CON SERVICING

---

**T: 01986 873999**

**M: 07860 857 392**

**INFO@HWBAUTOMOTIVE.COM**

**HWBAUTOMOTIVE.COM**



UNIT 7B | BLYTH RD IND EST | HALESWORTH | IP19 8EN



# Tyro Cross Country Trial

**3<sup>rd</sup> February 2019**

First Tyro trial of the year so another chance to try your hand at trialling. For the less experienced members, youngsters of 13 and above and just the plain curious. Come and have a go and see what all the fuss is



about with this trialling lark.

Scrutineering from 9:00 hrs for an 10:00 hrs start, expected finish time about 16:00hrs.

Access routes around the yellow course will be available between 09:00 hrs and 09:45 hrs for driver familiarisation.

Please remember it's

cheaper to pre-book than to 'arrive and drive' on the day.

Pre-booked entrants fee £15 - Arrive and drive £20 and as usual we need a minimum of 5 entrants to run this event so please book early to ensure it goes ahead.

Pre-booking will be available via the forum, Facebook or email [compsec@slroc.uk.com](mailto:compsec@slroc.uk.com).



# **SLROC CLUB SHOP**

## **Clothing, Stickers, etc**

**All clothing is available to order in a range of sizes and colours,  
just ask!**

<b>T-Shirt</b>	<b>£10.00</b>
<b>Polo Shirt</b>	<b>£13.00</b>
<b>Sweatshirt</b>	<b>£16.00</b>
<b>Hoodie</b>	<b>£16.00</b>
<b>Rugby Shirt</b>	<b>£24.50</b>
<b>Fleece</b>	<b>£20.00</b>
<b>Bomber Jacket</b>	<b>£32.00</b>
<b>Overalls</b>	<b>£34.00</b>
<b>Children's T-Shirt</b>	<b>£9.50</b>
<b>Children's Polo Shirt</b>	<b>£11.50</b>
<b>Children's Fleece</b>	<b>£19.50</b>
<b>Children's Polo Hoodie</b>	<b>£14.00</b>
<b>Children's Bomber Jacket</b>	<b>£29.00</b>
<b>Baseball Cap</b>	<b>£10.00</b>
<b>Embroidered Hat</b>	<b>£10.00</b>
<b>Door / Panel Sticker</b>	<b>£4.00</b>
<b>Small Sticker</b>	<b>£1.00</b>
<b>Window Sticker</b>	<b>£1.00</b>
<b>www.slroc.uk.com Sticker (Black, Orange, Silver, Yellow, Red, Blue &amp; White)</b>	<b>£2.00</b>
<b>Cap Light</b>	<b>£3.00</b>
<b>Childs Hi-Viz Vest</b>	<b>£2.50</b>

**Prices are correct at time of going to print but may be subject to  
change.**



# **SLROC CLUB SHOP**

## **Recovery Gear**

<b>2M Bridle</b>	<b>£21.00</b>
<b>5M Rope</b>	<b>£30.00</b>
<b>7M Rope</b>	<b>£35.00</b>
<b>9M Rope</b>	<b>£40.00</b>
<b>Bow Shackle</b>	<b>£8.00</b>
<b>'Jate' type Recovery Ring</b>	<b>£15 .00</b>
<b>Battery Clamp</b>	<b>£6.00</b>
<b>Rigger Gloves (1 pair)</b>	<b>£1.00</b>

Prices correct at time of going to print but may be subject to change.  
The Club Shop is at most events, and items are also available from:

Chris Finbow: 07771 588298 - Email: [clubshop@slroc.uk.com](mailto:clubshop@slroc.uk.com)

Please get in touch if you wish to collect items from a Show.



# CLUB CONTACTS

**CLUB PRESIDENT**

Ralph Lambourne



**CHAIRMAN**

Andy Jeff  
07801 470055  
chair@slroc.uk.com



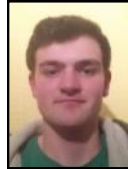
**CLUB SECRETARY**

Graham White  
secretary@slroc.uk.com



**TREASURER**

Michael Whitting  
treasurer@slroc.uk.com



**VICE CHAIR**  
**COMPETITION SECRETARY**

Richard Gilmore  
vicechair@slroc.uk.com  
compesec@slroc.uk.com



**MEMBERSHIP SECRETARY**

Vacant  
membership@slroc.uk.com

**OFF ROAD SECRETARY**

Vacant  
offroadsec@slroc.uk.com

# CLUB CONTACTS

## **SAFETY & TRAINING OFFICER**

Pat Corps  
07887 500799  
safety@slroc.uk.com



## **PR & SHOW CO-ORDINATOR**

Tim Alden  
pr@slroc.uk.com



## **CLUB SHOP**

Chris Finbow  
07771 588298  
clubshop@slroc.uk.com



## **NOOZE EDITOR**

Jane Gilmore  
07793047986  
nooze@slroc.uk.com



**Please note:** Some of the Committee Members have requested that details of their addresses are not published within the newsletter for personal reasons. Please do not let this put you off contacting any of the Committee, they will be only too glad to receive phone calls (as long as they are at a reasonable time of day, say **no later than 9:30pm**).

If you have any mail you wish to pass on to a Committee Member then it can be sent via any of the published addresses above. The Committee also respects the privacy of each and every Club member, and to that end, we do not give out details of Club members to any other organisation.

---

## **E-Nooze, A Quick Plug**

Nooze in electronic form has been around for some time now and a number of members get their copy e-mailed out before the regular paper Nooze goes in the post. If you'd like to switch to E-Nooze or get E-Nooze as well as paper Nooze, or if you're a joint or junior member who would like Nooze e-mailed to you, send a request by e-mail to [nooze@slroc.uk.com](mailto:nooze@slroc.uk.com) and I'll add you to the list!

Thanks Jane

## SLROC Membership Renewal

Membership is due for renewal from 1<sup>st</sup> December 2018 – 31<sup>st</sup> January 2019.

**Renewal fees:**

- Full member - £30
- Joint (age 17+ and at the same address of full member) – £10
- Child under 17 - Free

Membership renewals not received by 31<sup>st</sup> January will be deemed as lapsed therefore requires an additional £5 re-joining fee.

Please complete the form below and send it together with your payment to:

SLROC Membership Secretary – Mrs Jane Barham,  
20 Camella Crescent, Clacton-On-Sea, Essex, CO16 7ET  
✉: [membership@slroc.uk.com](mailto:membership@slroc.uk.com) ☎: [www.slroc.uk.com](http://www.slroc.uk.com)

<b>Member's details:</b>		<b>Membership No.:</b>
Title:	First name:	Surname:
<b>Additional member's details:</b>		<b>Membership No.:</b>
Title:	First name:	Surname:
Title:	First name:	Surname:
Please attach details of any further additional members including <u>Juniors</u> with their <u>date of birth</u>		
Address:		
		Post Code:
Contact Telephone Number:		
Email address:		

I enclose a cheque for £..... made payable to Suffolk Land Rovers Owners Club

Signed: ..... Date: .....

Payment accepted by BACS, Account Number: 03828330 Sort Code: 20-22-67 Payee Reference: Your Membership Number(s) and Your Last Name (eg 1234 Smith), with thanks

How would you like to receive your copy of the Nooze Magazine?

Paper

Emailed PDF

Both

Admin Only

Type of membership

Renewal

Late Renewal

Fee Paid

CSH | CHQ | BACS

Card Issued:

Date:



# Insurance tailored around you & your Land Rover

See how we measure up, call us on **0800 916 1288** and you could get a cheaper quote compared to online

At Adrian Flux we have over 40 years experience tailoring insurance to suit your specific needs. We don't believe in "one size fits all" when it comes to insurance, which is why you could save time and money by calling a member of our team directly.

## Ask our experienced staff about:

- Club member discounts
- Agreed valuations
- Limited mileage discounts
- European breakdown cover
- Driving other vehicles

**Car Club Quoteline: 0800 916 1288**

Member from 9am, Fri from 7am Sat from 10am. Authorised & regulated by the Financial Conduct Authority