



March 2019

NOOZE

The Suffolk Land Rover Owners Club Magazine



WWW.SLROC.UK.COM

FOR ALL YOUR LAND ROVER SERVICING NEEDS



- Fully Trained Land Rover Technicians
- The latest technology IDS & SDD diagnostics and repairs
- Competitive pricing with no hidden extras

LINDACRE LAND ROVER SERVICE CENTRE

2 Farthing Road, Sproughton Industrial Estate, Ipswich, IP1 5AP
Tel 44 (0)1473 461 751. Fax 44 (0)1473 744 048.

LINDACRE IPSWICH



GO BEYOND

Nooze News!

NOOZE

is the "mouthpiece" of the
**Suffolk Land Rover
Owners Club**

SLROC welcomes any
comments, contributions or
complaints from our members.
Send your contributions to:

Amy Berwick

10 Hall Lane, Wacton,
Norwich, NR15 2UH
Tel: 07496549234

Or email me at:

nooze@slroc.uk.com

COPY DEADLINE:

15th of the preceding
month at the very latest
please.

SLROC uses CB Channel 7

The opinions expressed in this
publication are not necessarily
those of the Editor, Committee,
Club or Company.

Neither can responsibility be
taken for the accuracy or
otherwise of articles or
advertisements placed.

All logo's, legends and artwork
remain the property of SLROC
and may not be reproduced
without permission from the
Committee.

**©2002-2019 Suffolk Land
Rover Owners Club Ltd**

We would like to thank
BETTAPRINT Woodbridge Ltd
For their help in producing
Nooze

SLROC Supports both national
and local 4x4 response groups

Cover Picture

An interesting angle...

I am sitting here shocked at the fact I have already compiled my second issue of Nooze, and that it is already March! However, I must say, what a difference in weather compared to last year! This time last year the Beast from the East was starting to show its ugly face, and I was gutted as I had just picked up Flo from the garage and couldn't start driving her straight away! Whereas today, I have been outside all afternoon and with my car display suggesting it was 20 degrees, I couldn't quite believe it! Lets just hope that's the last of the cold winter, as I am more than ready for summer!

In this months issue we have a write up about installing a South Down snorkel and a different perspective of a trial. I just want to thank members for sending me articles as these make for a great read for the other members of the club and helps keep Nooze to run, which leads me to a little plea for articles. I know many of you (without naming any names... you know who you are) have been modifying and tinkering with your Landies, so a few words would be fantastic! Also if you attend an event and fancy doing a little right up I would be extremely grateful! As shown by the article further on by Jane, you don't have to be the winner of an event to send a few words!

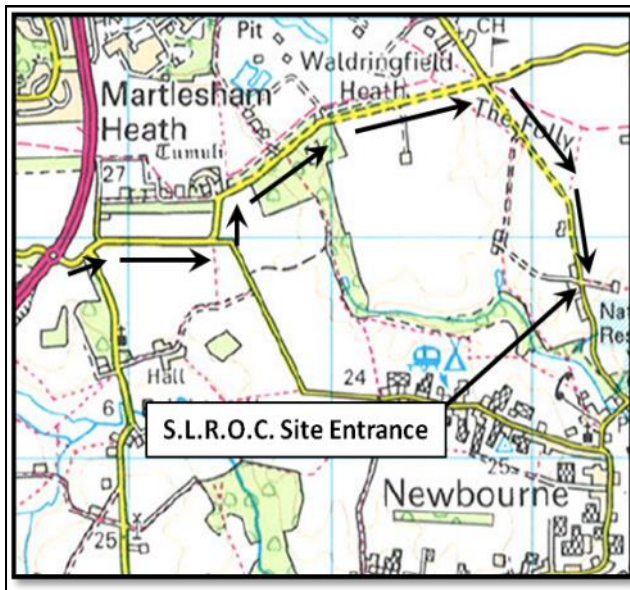
Also in Nooze this month there are plenty of competitions coming up as explained by Richard, including the Interclub trial. With regards to events, we have scheduled a maintenance day for the 16th of March. At these events the help from members is crucial in keeping our Newbourne site exciting yet functional for all members. The main jobs that need completing are filling potholes on the driveway, fixing the fence by the winch hill and lots of strimming and trimming! If you have some free time that day, it would be great if you could help out.

I would like to finish on thanking Andy on his commitment to Chairman for the last three years. I'm sure you would all agree that he has done a brilliant job in leading the club forward!

See you soon!

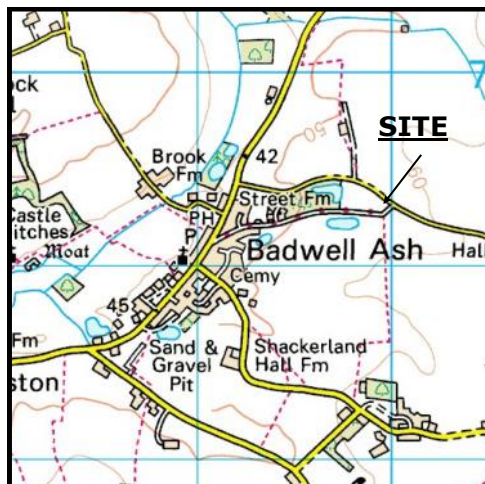
Amy

Directions to the Newbourne club site



The club has its very own off-road driving site which we use monthly for weekend events, and competitions. The site is situated to the east of Ipswich, near to the village of Newbourne. Strict rules must be adhered to when using the site, to protect the safety of all users. Please keep your speed down around the village, and especially on the access track which has a 5mph limit. See you there!

Badwell Ash



OS sheet 155 grid ref TL 000 693

Snugg's Pit



OS sheet 155 grid ref TL 826 421

Chat From the Chair

Tempus Fugit...As someone once said!

Three years ago, I took over the job of club chairman. The previous chairman, Chris, had it seemed spent three years pouring oil on troubled waters and steering the club to a place where everyone could have a great time enjoying all the activities that were undertaken. Having helped in some of these endeavours, I thought I knew what I was taking on and I was 'braced for impact'. I couldn't have been more wrong.

With a great team on the club committee, managing the problems and driving the club forward has in reality meant that the job of chairman has been more being someone who delegates and checks that things are being done rather than someone who takes on the world and has to carry everything! For me, I hope my greatest contribution has been to provide the glue that holds together all the necessary parts that result in an all-inclusive club that is run by the members and for the members. No matter what you want from the club, and how much you want to be involved, the organisation should be there to listen and guide and to make things happen in a way the members want them to happen and not to dictate the will of the few.

The greatest pleasure for me as chairman has to be handing over cheques to charities at Christmas. The work that so many people put in throughout the show season comes to fruition and the benefit it creates is absolutely measurable. Yes, it raises the impression of the club to the general public, but the fun we have, and give, along the way is fantastic too. The screams in the back, racing up horse power hill and the memories we leave make the hard cash at the end of the day the cherry on the cake and I'm pleased to say that year on year that cherry grows and grows!

At the end of my term, I feel there are still things to accomplish and jobs that still need to be done and though I welcome in Pat Corps as the new chairman I'm pleased to be staying on the club committee in order to continue to help and provide support wherever the club needs it!

Some things remain constant and every day challenges are always around. As a volunteer organisation, oddly enough, it's always hard to find volunteers to take things on. Generally, we just about manage and though more recently a number of people have come forward to help with the committee and other parts within the club, we always need more volunteers!

As well as welcoming Pat into the job of club chairman, I'd also like to extend welcomes to Niki who will be looking after memberships, Toby who has offered to help manage the Newbourne site and Spencer who will be taking over duties at the club shop and of course Amy who is editing this Nooze magazine!

Thanks to everyone who has supported me as chairman, please continue to do the same for your club and committee going forward.

All the best...

Andy.

EVENTS PLANNER 2019

This planner is intended as a guide and as such any event may be subject to change.

<u>When</u>	<u>Club Event</u>	<u>Where</u>	<u>Org</u>
March 16 th	Maintenance Day	Newbourne	T. Parker
March 17 th	Driving Day	Newbourne	G. White
March 24th	Interclub CCVT	Burgh Castle	BLRC
March 31st	CCVT	Badwell Ash	TBC
April 27 th	1 st Training Day & Camp Over	Newbourne	P. Corps
April 28 th	Driving Day & Auto jumble	Newbourne	R. Gilmore
May 5th	Interclub CCVT	Pentley Lake	TBC
May 18th	Novice Winch Trial & Camp Over	Newbourne	TBC
May 19 th	Driving Day	Newbourne	G. White
June 15 th	2 nd Training Day & Camp Over	Newbourne	TBC
June 16 th	Driving Day	Newbourne	TBC
July 13th	Tyro CCVT & camp over	Snuggs Pit	R. Gilmore
July 14th	Punch Hunt	Snuggs pit	R. Gilmore
July 20 th	Maintenance day & Camp Over	Newbourne	TBC
July 21 st	Driving Day	Newbourne	TBC
Sept 1st	CCVT & Interclub	Badwell Ash	M. Whitting
Sept 8 th	3rd Training Day (Novice Driver)	Newbourne	P. Corps
Sept 21st	Tyro CCVT & Camp Over	Newbourne	S. Bareham
Sept 22 nd	Driving Day	Newbourne	TBC
Oct 19th	"Ladies/Junior" Tyro CCVT & Camp Over	Newbourne	C. Finbow
Oct 20 th	Driving Day & Auto Jumble	Newbourne	C. Finbow
Nov 3rd	Single Vehicle Winch trial	Snuggs Pit	R. Lambourne
Nov 17 th	Children in Need Driving Day	Newbourne	A. Jeff
Nov 24th	CCVT	Snuggs Pit	A. cutting
Dec 29th	Mince Pie Driving Day	Newbourne	G. White

*****Events requiring Pre-Booking are in bold type*****

Driving Days - **£10*** - Driving Day Junior Afternoon **£5**

CCVT and Tyro Trials - still only **£15 Pre-Booked**

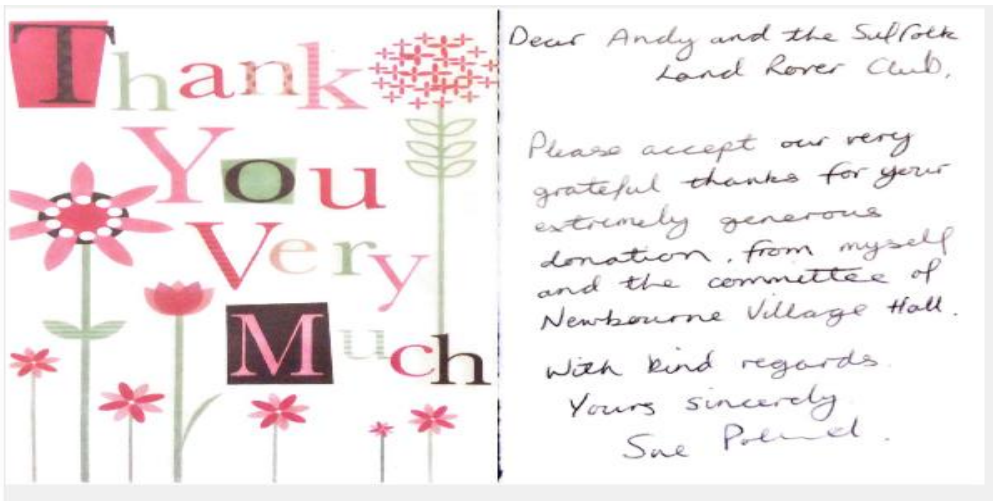
CCVT and Tyro Trial - Arrive & Drive (where permitted) **£20**

***Don't forget: It's only a fiver for each extra driver**

SHOW PLANNER 2019

This planner is intended as a guide and as such any event may be subject to change.

<u>When</u>	<u>Show</u>	<u>Where</u>	<u>CoC / Org</u>
May 29 th —30 th	Suffolk Show	Trinity Park	T. Alden
June 22 nd —23 rd	Heveningham Country Fair	Heveningham	T. Alden
Aug 3 rd —4 th	Festival of Wheels	Trinity Park	T. Alden
Aug 11 th	Club Open Day	Newbourne	A&S Berwick
Sept 14 th —15 th	Henham Steam Rally	Henham Park	R. Heather
Sept 14 th —15 th	LRO Show	Peterborough	TBC
Sept 22 nd	Warren Classic Car Show	Danbury	TBC



Please Note:

It has come to the committees attention that some members are not adhering to the club site's rule of ensuring all rubbish is taken home with them. After the Day into Night trial in February, there was a large amount of rubbish found in the cabin, mainly consisting of Fish and Chip wrappings which then had to be cleared up by other members. I am sure you will all agree that our club site is a great place for us all, and therefore taking care of it will ensure everyone gets enjoyment when they visit!



Many thanks, Amy

Please Support Our Advertisers As They Support Us!



**30 YEARS
EXPERIENCE**

LAND ROVER SPECIALISTS

- ✓ *Service*
- ✓ *Maintenance*
- ✓ *Parts*
- ✓ *Accessories*

50% cheaper than the main dealer plus great discounts for club members!

WWW.JSF4X4.CO.UK

01206 396644

**Unit 1, Causeway End Industrial Estate, Lawford,
Manningtree, CO11 2LH**

Please mention 'Nooze' when replying to adverts

Cross Country Vehicle Trial **31st March 2019 @ Badwell Ash**

The ground is similar to Newbourne with soft sand and waterholes, but also a good selection of mud, axle twisters, clay banks and steep drops. It is an open site with virtually no trees so a good one for spectators.

As we only have the site for the day you must be there early for scrutineering, followed by a prompt 10 am start (no Late entries sorry) and be prepared for a full day's trialing.

Pre Booking for this event is via the Club Forum, email compsec@slroc.uk.com or Facebook.

Remember pre-booking entrance fee £15 or Arrive and drive £20, (pre-booking closes 2 weeks prior to the event).

Directions

Follow A1088 north. About 1 mile through Norton turn right to Stowlangtoft, Hunston & Badwell Ash. Once through Badwell Ash turned right signposted Badwell Ash Green.

Site entrance 1/2 mile on right

OS sheet 155 grid ref 000 693



LAND ROVER SPECIALIST



Servicing, Repairs and MOT work
Vehicle Preparation

Autologic Diagnostic

Visionaire Tracking Systems

10% Discount for club Members ✳

*** On Labour Only**

SWB, Mutford Garage, Nr Beccles. NR34 7UL



Competition results

A fantastic 2 days trialing was had by all at the clubs Day into Night and Tyro Trial at Newbounre on a cold February weekend.

The Day into Night was as popular as it is every year. We had a wide range of vehicles ranging from buggies to Tim in his trusty 110 which made for an interesting day.

The competitors were split into 2 classes Road Taxed Vehicles and buggies/modified.

The Tyro Trial on the Sunday was also a really good day with a number of different vehicle entered including a Series Light Weight.

I would like to thank Michael Whitting and Andy Cutting for setting trial and to all the marshals and CoC who without their help events like this wouldn't take place.

Tyro result 3rd February

Class 2		
1st	Jake Stacey	2pts + 3S
2nd	Alex Barrow	17pts + 9S
3rd	Nigel	23pts + 9S
4th	Amelia	25pts + 10S
5th	Warren	37pts + 11S
6th	Sean	39pts + 7S



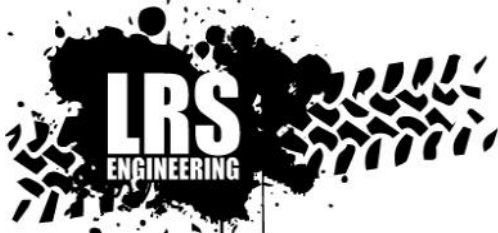
Day in to Night Trial result 2nd February

Class 1		
1st	Mark Hitchings	18pts
2nd	Niki Broadley	30pts
3th	Mark Stacey	47pts + 7S



Class 2		
1st	Richard Gilmore	30pts + 6S
2nd	Tim Dyer	31pts + 9S
3rd	Andy Broadley	39pts + 5S
4th	Tony Mattack	52pts + 5S
5th	Gareth King	61pts + 14S
6th	Buggs Eley	Retired





**Unit 6 Westmead,
Hedingham Road
Gosfield, Nr Halstead
Essex CO9 1UP
01787 469553**

www.lrsengineering.co.uk



Bearnmach
LAND ROVER PARTS



B WILDBEAR

AllMakes4x4
Quality, Value and Performance

TerraFirMa
Serious 4x4 Accessories

*Servicing, Repairs, Diagnostics, Programming,
Genuine & Non Genuine Parts Supplied
Registered To Land Rover Online Service System*



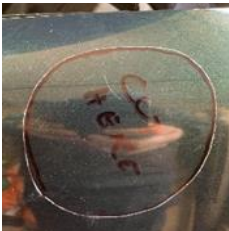
 Find us on:
facebook®

The Fun and Games of fitting a Southdown Snorkel

9th of February, amid storm Eric and the 55mph winds it was a mild 10° but it didn't feel like it! Brian had kindly offered to help me fit the Southdown snorkel to Katie that had sat in my workshop for 11 months. Even though it's now fitted, I'm still in two minds about it & the reason is, I didn't even want a snorkel but having filled the airbox with muddy water recently, I took that as my warning.

Supplied in the box is a template with separate instructions in very poor English or at least, very poor spelling and that never fills me with confidence. Anyway, after laying out all the parts on a borrowed workshop floor (thanks again Brian), we set about trying to fathom how it all pieced together, it's got to be fairly straight forward right? Well yes it was but in my mind it's all looked a bit of a bodge so I phoned Southdown for some advice, surely, I was reading it wrong? Oh no I wasn't! You basically stick the template to the wing, cut out the hole & the snorkel fits where it touches because although it says 89mm, it actually measures 83! Then you have to hack away at the inner wing & squash the supplied pipe to make it fit then squash the other end to make a round pipe fit on an oval airbox inlet & use loads of silicone... whatttt? Still on the phone, I told them it sounded like a bit of a bodge, slightly flabbergasted he assured me that it all fits together quite nicely so I bit the bullet & made a start by putting the kettle on.

Template on & it's time to get the Dremel out! (We had unbolted the wing to check for wiring, removed the headlight & also the airbox to allow room for works) but temporarily bolted the wing back on for stability. There are no useful video's online to show fitting so it was a case of double check things as we go along.



Gingerly, I started cutting, offering up the snorkel several times to ensure the hole wasn't oversize. I have to say that the template isn't spot on, it took a bit of fettling to get a nice or rather 'acceptable' fit. Anyway, after an hour or so we were making progress, the outer wing was cut, the inner wing had been carefully opened up to accept the round pipe through an oval hole, edges had been filed & brackets had been fitted.





Bracket holes being drilled...

Inner wing being erm... mullered!

Offering up the snorkel...

Once all the prep work was up & start plumbing! heard once & it goes that in job of



done, it was a case of clean up, tidy There's this old Chinese proverb I something along the lines of... "One have too much Tiger Seal"! So, with mind, Brian & I started the messy rebuilding my car.

Tiger seal, tiger seal & more tiger seal! Even remembered to fill the little drain hole in the bottom of the airbox!



All sealed, pipes run, wing, headlight, indicator & airbox re-fitted.



That'll have to do!!

So, here's my final thoughts & personal opinions...

- Cost – £140
- Additional costs – Tube of Tiger Seal & dark chocolate digestives to keep Brian working.
- Ease of fitment – Easy / Intermediate. Just take your time
- Precise fitment – No.
- Bit of a bodge? – Yes! Make the internals fit better & I'd have been very happy.
- Fitting time – about 3 hours total, measure twice, cut once!
- Overall happiness – Meh!
- Aesthetically pleasing? – I think so.
- Wish I'd bought a Safari? – Well, no because I didn't want the entire wing taken up with black plastic.
- Glad I bought a Southdown? – Well, no! It's just there to serve a purpose & I actually think it'll do it well.
- Would I recommend a Southdown snorkel? – Definitely not yet but given time, who knows?

- Jay





Mansfield 4x4

BURY ST. EDMUNDS LTD

01284 767174 www.mansfield4x4burystedmunds.com

**Parts, Accessories, Service, Repair and Diagnostic Testing
for all models of Land Rover and Range Rover**



MOT Testing for all cars

3D wheel alignment available



**Winch mounts • Side bars • Underbody protection • Exhausts
Engine and Clutch upgrades • Wheels and Tyres**

And much more....

Email: info@mansfield4x4.net

Unit A1 Chase Road, Northern Way Ind. Est., Bury St Edmunds, Suffolk, IP32 6NT



AllMakes4x4
Quality, Value and Performance

TerraFirma
Service 4x4 Accessories

ODYSSEY
THE EXTREME BATTERY

DRAPER

GS

GS

WARN

BRITPART

Bearmach

EDGE

LightFORCE
PERFORMANCE LIGHTS

GOODWINCH.COM

SUPERWINCH



Mansfield 4x4
BURY ST. EDMUNDS LTD

01284 767174

www.mansfield4x4burystedmunds.com

***Free air conditioning
efficiency report***

***Free 4 wheel alignment check
with a printed report.***

***Air conditioning regas for
R134 systems £45 + vat***

MOT test class 4 £39.95

MOT test class 7 £47.95

***Parts, Accessories, Service, Repair and Diagnostic Testing
for all models of Land Rover and Range Rover***

Email: info@mansfield4x4.net

Unit A1 Chase Road, Northern Way Ind. Est., Bury St Edmunds, Suffolk, IP32 6NT



Day into Night Trial

From a different perspective

Over the past couple of years I have really enjoyed watching the diversity of this trial. Everything seems possible in the day light, but then the dark comes and the one extra set of lights (or not) are switched on to go forth and complete the same sections as earlier in the day, but in the dark, surely not that difficult I think....How wrong was I!!

So as normal, we get all the prep work done, before leaving home, layering up with clothes, looking like we are going to a Michelin Man look-alike contest. Filling up countless flasks of hot beverages to thaw us out throughout the day and night! Oh and not forgetting to put in the salt and vinegar and tomato ketchup, to go with the tea time treat of Fish and Chips. The prep for the Land Rover goes without saying! I enjoy not having to get up at the crack of dawn to do all this, as it's a more civilised meeting time of midday.



The usual scrutineering takes place and lots of chat about what vehicles are entering and checking each other's latest modifications out, goes on between the competitors.

Normally by now I am planning which layer of clothes to add next, however today I realised that Richard's co driver had other arrangements, so it looked like he would be doing it himself, not that he was too bothered. However, I saw a potential opportunity here to maybe keep warm, well Wesley is a V8, with a good heater. How difficult could it be, I thought, yes a bit bumpy and maybe a bit painful at times, but surely being warm inside outweighed standing in the freezing cold weather. Ha what was I thinking!!

Richard went off and walked the course and left me feeling pretty smug, thinking I'd got this in the bag, I could just sit there with the radio on, nice and toasty and enjoy the view, he didn't need me. He was third in line to go, so whilst he watched the first two competitors go through I made the most of my new found facilities. Then it was our go. Nice and slowly he started and there was me thinking he was taking it easy for me, until we got to the 8th gate, and all of a sudden there was a massive rev of the engine and Wesley shot up the bank, landing quite hard with a thud and then proceeded to carry on through several other gates in a similar manner. It was at about this time that I first started to realise that maybe my original smugness was starting to waiver. I was nice and

Well for those of you that go to the trials will know, you change around places, so everyone gets a fair chance, so number one had dropped to the last place and we were due to go second. There was me thinking I had time to utilise this time for a warm drink. Oh no, this time it was suggested I walk the course, so I knew where we were going. Obliging I thought what harm can it do? Well two very close encounters later with deep mud and puddles, thanks to very stubborn brambles that seemed to come out of the ground from nowhere and trap my feet, I have found I'm actually quite good at the one legged wellie skiing!!

Not showing any signs of 'I was wrong assuming this was easy' I get back in the passenger seat with more of a grimace than a smile and off we go. Soon in to this stage, I realised I was going to have to hold my nerve, as it was just as bumpy and slippery and muddy.

After two more sections, I was beginning to think that the cold wasn't that bad after all and maybe I should sit out sections 5 & 6, but to my delight, down came the rain and sleet and oh boy it was cold. I gracefully gave in and decided that the bumps, bangs and war wounds were well worth the warmth of a V8 heater!!

The end of the day sections could only mean one thing.....Fish and Chips and a good catch up with everyone huddled in the club house.



Once we had all been fed and watered, it was time for everyone to show off their extra set of lights and how this was going to help them see the canes in the night sections. All excited, thinking Richard wouldn't need my help as the lights would show him the way, I asked him to turn Wesley's on. It was at this time that yet again realisation set in, that his 'I haven't had time to fit extra lights' could only mean one thing..... I was going to be co-driver again for the evening sections. Bearing in mind Wesley's lights are not much brighter than candles normally, this was going to be a challenge!

This was going to be fun, I say that very loosely!

Off we went going through the same sections as we had done previously with our candles lighting the way. It was definitely an eye opener, as everything seemed so much different and you really had to concentrate on what was ahead. As expected there was a lot of banter and competitiveness increased as the sections went on and dare I say some near misses and some shrub maintenance throughout the evening!!

Well I survived my first trial as a passenger and Richard actually came first place, (I think it was the co-drivers help personally)!

As much as I was glad to be going home to a nice warm house, with heated seats in my Landy, I can honestly say, I thoroughly enjoyed the day into night.... But don't tell anyone!

- Jane

HWB AUTOMOTIVE

INDEPENDENT LAND ROVERS • CLASSIC & SPORTS PRESTIGE SPECIALISTS

LAND ROVER SPECIALISTS

LAND ROVER MASTER TECHNICIAN
OVER 10 YEARS EXPERIENCE

ALL MAKES OF SPORTS, CLASSIC &
PRESTIGE CARS SERVICED & REPAIRED

FULL LAND ROVER DIAGNOSTICS

PERFORMANCE UPGRADES & BESPOKE
MODIFICATIONS UNDERTAKEN

RESTORATION & RECOMMISSION WORK

MOT PREPARATION & MOT'S

AIR CONDITIONING SERVICING

ATF TRANSMISSION
MEGA FLUSH SERVICES

Find us at

UNIT 7B | BLYTH RD IND. ESTATE
HALESWORTH | IP19 8EN

T 01986 873 999

W HWBAUTOMOTIVE.COM

E INFO@HWBAUTOMOTIVE.COM



UNLEASH THE POTENTIAL

ALIVE™

ALIVE TUNING
AUTHORISED AGENTS
ECU REMAPPING AND PERFORMANCE SPECIALISTS

CCVT & RVT Interclub Competition

An interclub competition has been arranged with Breckland Land Rover Club and Norfolk 4 x 4. The first round will be at Burgh Castle on 24th March the second round will be at Pentley Lakes on 5th May and the third round will be our home event at Badwell Ash on 1st September.

These events are open to all SLROC club members, come a long and have some fun.

If you wish to enter or need any more information please contact me.

compsec@slroc.uk.com, via the club forum or on the SLROC Facebook page.

Richard Gilmore, Competition Secretary



February Driving Day





Bearmach is pleased to offer
**Suffolk Land Rover Owners
Club**

A **10%** discount code to use on our website
www.bearmach.com

USE DISCOUNT CODE: **SLROCTEN**

Subject to Bearmach's Terms and Conditions. 10% discount does not apply to clearance stock.
Cannot be used in conjunction with any other offer.

**The Club will receive 10% of
your order value as cashback
too!**



Everyone Benefits!



 **TRUSTPILOT**



Rated as Excellent

Discover what our customers
think about us



Worldwide Shipping

Same day international dispatch

Committee Meeting Minutes

Meeting held Friday 4th January, 8pm
Minutes prepared by Graham White

Present Richard Gilmore (RG), Graham White (GW), Pat Corps (PC), Andy Jeff (AJ)(Chair), Tim Alden (TA), Jane Gilmore (JG)

Apologies Michael Whitting

Member with special duties not required to attend Committee.

Sarah Berwick (SB), Amy Berwick (AB), Toby Parker (TP), Nikki Broadley (NB)

Minutes of previous.

Approved as a true account. Proposed GW, Seconded PC

Matters arising from previous meeting.

Outstanding actions. (NB Action reference = Date + numeric i.e. MMDDNN)

110311 – Membership Sec to have access to bank acc to check memberships –
Action MW

011201 – Amend Raffle accounting so that it is the same as Club Shop – **Action MW**

011202 – Action Complete

011204 – Driveway potholes to be filed – **Action TP**

040601 – Action removed

040602 – see action 010413

060107 – Visit Newton Hall to discuss future involvement – **Action TA**

090704 – Organise fire extinguisher service – **Action PC**

100503 – Confirm current value expectations of the 5kW generator – **Action MW**

100504/6/7 – Actions complete

110201/2 – Actions complete

110203 – Copy & Post IOPD Events notice – **Action AJ**

110204/5 – Actions Complete

Actions arising this meeting

010401 – Change Bank if Membership Sec still has no access to account after January – **Action MW**

010402 – Request summary of Raffle accounts from Heidi Finbow (HF) – **Action AJ**

010403 – Set up Toby Parker (TP) with a email account – **Action AJ**

010404 – PC to loan the Club a generator for its use – **Action PC**

010405 – JG to transfer Nooze to Amy Berwick (AB) – **Action JG**

010406 - Notify Lighthouse charity of show dates—**Action JG**

010407 - Obtain chosen charities logos for trailer - **Action RG**

010408 - Check that membership procedure held on Google Drive is up to date -
Action GW

010409 - Amend website to show Niki Broadley (NB) as new Membership Sec -

Action AJ

010410 - Include NB, SB & AB photo and details in next edition of Nooze - **Action AB**

010411 - Organise NB access to bank account (action 110311 & 010401) - **Action MW**

010412 - Discuss with Paul Whitting potential Committee position - **Action AJ**

010413 - Contact G.Nurse re 5kW generator - **Action PC**

010414 - Scan club equipment details into Google Drive then pass on to TP - **Action GW**

010415 - Confirm fixtures for MSA Calendar - **Action RG**

010416 - Visit/discuss the Clubs possible involvement at the Warren Classic - **Action TA**

010417 - Liaise with SAA (see AOB) to mutually agree a contract - **Action TA**

010418 - Notify Rainbow charity of show dates - **Action TA**

Calendar items

Review website hosting – Agreed to leave this on hold for time being
Agree the Charities for the year - done
Populate MSA fixtures on MSA Club Site – action 010415

Membership

December Total = 279 Full = 172 Joint = 78 Junior = 29

December New members Sam Pryke & Don Ewings – Woodbridge

Total Renewals = 122 Full = 115 New = 6 Junior to full = 1

MPDD New members

Deanna Carpenter - Knodishall Carole French – Felixstowe Gareth Ell - Colchester

Keith Coomber – Ipswich Nikki Stevens & Chris Pateman - Needham Market

Former Junior James Berwick - Norwich

The transfer Membership to NB would be completed during February. The Committee want to thank Si & Jane Barham for covering the role for the past few months.

Finance report No report available

Nooze

It is intended that AB will take over Nooze for the next edition with JG assisting the hand over.

Safety & Training

PC confirmed the three training days for next year and that the principle 'players' in the 2017 MPDD incident had been spoken to.

The repair to the back cabin is now structurally safe and secure but unfortunately there continues to be a water leak.

Shows

It was unanimously agreed that the charities for 2019 will be.

Lighthouse, CC No.1069296

Over the Rainbow, CC No.1163971

TA confirmed that confusion on the part of Hevingham over 4x4 Response and SLROC plus an issue of conflict regarding the use of a roadway had been amicably resolved and that he (TA) will be their principle point of contact.

Those responsible for organising shows need to plan for the collection and return of the Seesaw trailer from Tiptree.

It was agreed that the Club would make discretionary payments to members volunteering to tow trailers to shows etc towards out of pocket expenses.

Confirmation is expected that Bearmach will sponsor the Club show T shirts.

Competition

RG Reported the Day into night trial for 2nd to be set by Terry and Tyro for 3rd Feb RG to set and CoC.

CoC for trials need to forward results for inclusion in Nooze.

Correspondence

Parkinsons – A thank you for the donation given – To be published in Nooze

Bike Active – A thank you for the donation given – To be published in Nooze

Katy Nurse – Membership information – No further action required.

Suffolk Agricultural Association (SAA) – proposed contract – See AOB

Any Other Business (AOB)

Following the Suffolk Show last year there was a meeting at which SAA proposed a contract be set up. Recently this proposed contract has been received by the Club without points raised by the Club at that meeting and as such is not acceptable. TA had compiled a response which was discussed point by point by the Committee. This counter proposal by the Club will be given to SAA in response with a further meeting between the Club and SAA expected to finalise the agreement.

JG advised the Committee that she would not be organising the Club Open day this year.

Meeting closed 22.35

Next Meeting 7.30pm Friday 8th February at the Club

Minutes approved

..... **A.Jeff 8/2/19**



HILLCREST

VEHICLE SOLUTIONS

LAND ROVER SPECIALISTS

- **Specialist Repairs** requiring body removal
- **Chassis repairs** and replacement
- **Engine conversions** and replacement
- **Rebuilds**

- **MOT**
Discount if booked with a service
- **Servicing**
We carry out servicing to manufacturers specifications
- **Repairs**
All general repairs
- **Diagnostics**
Using the latest diagnostic technology
- **All makes and models welcome**
Modern and classic

**All mechanical work guaranteed for
12 months or 12,000 miles**

Hillcrest Vehicle Solutions Ltd, Hillcrest Garage, Cratfield Road,
Huntingfield, Halesworth, Suffolk, IP19 0QB

Tel: 01986 798668 Email: info@hillcrestvs.co.uk

Please call Jono Rout or Sandra French
for a no obligation quote or friendly advice

SLROC CLUB SHOP

Clothing, Stickers, etc

**All clothing is available to order in a range of sizes and colours,
just ask!**

T-Shirt	£14.00
Polo Shirt	£16.00
Sweatshirt	£19.00
Hoodie	£20.00
Contrast Hoodie	£22.00
Grizzly Fleece	£30.00
Chunky Zoodie	£27.00
Waterproof/Windproof Fleece	£50.00
Children's T-Shirt	£12.00
Children's Polo Shirt	£13.00
Children's Fleece	£23.00
Children's Hoodie	£16.00
Children's Hi-Viz Vest	£4.00
Baseball Cap	£10.00
Embroidered Beanie Hat	£10.00
Door / Panel Sticker	£4.00
Small Sticker	£1.00
Window Sticker	£1.00
www.slroc.uk.com Sticker (Black, Orange, Silver, Yellow, Red, Blue & White)	£3.00
Key Ring	£1.00

**Prices are correct at time of going to print but may be subject to
change.**

SLROC CLUB SHOP

Recovery Gear

2M Bridle	£21.00
5M Rope	£32.00
7M Rope	£40.00
9M Rope	£45.00
Bow Shackle	£8.00
'Jate' type Recovery Ring	£18.00
Battery Clamp	£6.00

Prices correct at time of going to print but may be subject to change.
The Club Shop is at most events, and items are also available from:

Spencer White: - Email: clubshop@slroc.uk.com

Please get in touch if you wish to collect items from a Show.
Items will soon be featured on our web site at **www.slroc.uk.com**

Training Days

The First Training day at the club on 27th April this year will be a Winch Re-qualification course.

I might have three additional vacancies. If anybody is interested please let me know. The Winch Qualification, is a precursor to becoming a Marshal.

The Second Training day on 15th June, will be for Marshal Training/Re-qualification.

The Third Training day on 8th September will be dependant on attendees for the first two courses.

If any club member is interested in either course, please let me know as soon as possible.

Pat Corps
Training and Safety Officer

CLUB CONTACTS

CLUB PRESIDENT

Ralph Lambourne



CHAIRMAN

Pat Corps
07887 500799
chair@slroc.uk.com



CLUB SECRETARY

Graham White
secretary@slroc.uk.com



TREASURER

Michael Whitting
treasurer@slroc.uk.com



VICE CHAIR **COMPETITION SECRETARY**

Richard Gilmore
vicechair@slroc.uk.com
compesec@slroc.uk.com



MEMBERSHIP SECRETARY

Niki Broadley
membership@slroc.uk.com



OFF ROAD SECRETARY

Toby Parker
offroadsec@slroc.uk.com



CLUB CONTACTS

SAFETY & TRAINING OFFICER

Pat Corps
07887 500799
safety@slroc.uk.com



PR & SHOW CO-ORDINATOR

Tim Alden
pr@slroc.uk.com



CLUB SHOP

Spencer White
clubshop@slroc.uk.com



NOOZE EDITOR

Amy Berwick
07496 549234
nooze@slroc.uk.com



WEB SECRETARY

websec@slroc.uk.com
Andy Jeff



Please note: Some of the Committee Members have requested that details of their addresses are not published within the newsletter for personal reasons. Please do not let this put you off contacting any of the Committee, they will be only too glad to receive phone calls (as long as they are at a reasonable time of day, say **no later than 9:30pm**).

If you have any mail you wish to pass on to a Committee Member then it can be sent via any of the published addresses above. The Committee also respects the privacy of each and every Club member, and to that end, we do not give out details of Club members to any other organisation.

Important Information

On entering the access lane to the site, please adhere to the **5mph** speed limit. Failure to do so, may result in removal from the site with no refund of fees.

If only watching or socialising, please turn right to park in the rear car park. Do not park in the main car park or proceed to signing-on/scrutineering.

Trailers to be parked in designated area in main parking area.

If taking part in the event please stop at the signing-on hut first:

For insurance purposes, membership cards **must** be available for inspection at **any** club driving event, if requested. Only members holding a full UK driving licence* and who have **signed on**, may drive at any club event. *With the exception of 'Tyro Trials' where Supplementary Regulations may allow drivers of 13 years and upwards.

Then continue to scrutineering: **All** vehicles must be scrutineered prior to driving onto the courses. Minimum requirements for recovery points are two -points at the front with bridle, and manufacturer's tow hitch at the rear or two 'Jates' and bridle. Please fit bridle before scrutineering.

Seat belts (inc. lap-belts) must be fitted and worn by all occupants.

(No belt, no ride. This is for your own safety).

Once signed-on and scrutineered, you may continue to the parking area.

All loose items must be removed from the vehicle before going on the courses. Vehicles will be checked for these items and stickers.

15 mph site speed limit

No driving along the footpath at the bottom of the site, except at the designated crossing point for access to and from the Woodland Course.

All recoveries under the supervision, and at the discretion of a Marshal. All facets of winching operations may only be carried out by persons aged 18 and over, including rigging.

Pedestrians must not walk on the courses, only the access roads- this is for your own safety.

Children (under 16's) remain the sole responsibility of parents/carers at all times. Children must wear a Hi-Viz vest whilst outside a vehicle in all areas. Children must be accompanied by an adult in all active vehicle movement areas.

Dogs must be kept on leads and under proper control at all times.

It is the responsibility of the owner to clear up after your dog(s).

Do not drive roped-off areas.

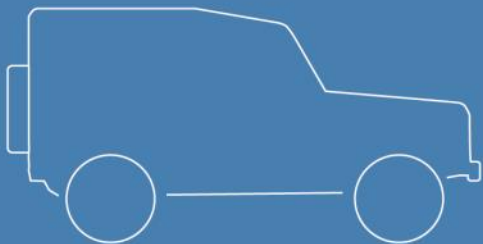
Do not remove ropes or posts unless instructed by a Marshal.

Strictly no drinking and driving. No motorcycles or quad bikes.

No tractor, Implement or overly-aggressive treaded tyres.

Please take all your litter home with you.

The Marshal's decision is final



Insurance tailored around you & your Land Rover

See how we measure up, call us on **0800 916 1288** and you could get a cheaper quote compared to online

At Adrian Flux we have over 40 years experience tailoring insurance to suit your specific needs. We don't believe in "one size fits all" when it comes to insurance, which is why you could save time and money by calling a member of our team directly.

Ask our experienced staff about:

- Club member discounts
- Agreed valuations
- Limited mileage discounts
- European breakdown cover
- Driving other vehicles

Car Club Quoteline: 0800 916 1288

Authorised & regulated by the Financial Conduct Authority