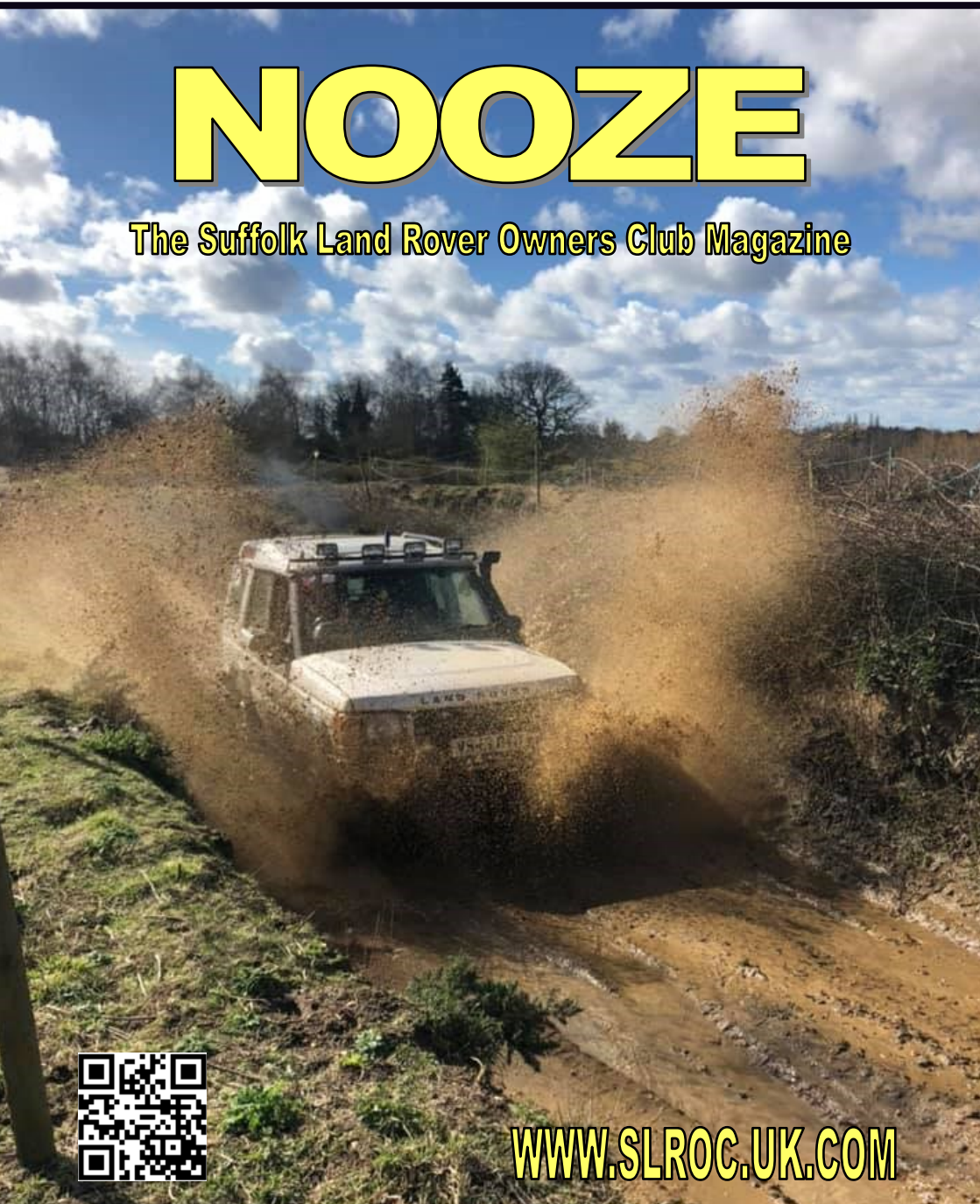




April 2019

NOOZE

The Suffolk Land Rover Owners Club Magazine



WWW.SLROC.UK.COM

FOR ALL YOUR LAND ROVER SERVICING NEEDS



- Fully Trained Land Rover Technicians
- The latest technology IDS & SDD diagnostics and repairs
- Competitive pricing with no hidden extras

LINDACRE LAND ROVER SERVICE CENTRE

2 Farthing Road, Sroughton Industrial Estate, Ipswich, IP1 5AP
Tel 44 (0)1473 461 751. Fax 44 (0)1473 744 048.

LINDACRE IPSWICH



GO BEYOND

Nooze News!

NOOZE

is the "mouthpiece" of the
**Suffolk Land Rover
Owners Club**

SLROC welcomes any
comments, contributions or
complaints from our members.
Send your contributions to:

Amy Berwick

10 Hall Lane, Wacton,
Norwich, NR15 2UH
Tel: 07496549234

Or email me at:

nooze@slroc.uk.com

COPY DEADLINE:

15th of the preceding
month at the very latest
please.

SLROC uses CB Channel 7

The opinions expressed in this
publication are not necessarily
those of the Editor, Committee,
Club or Company.

Neither can responsibility be
taken for the accuracy or
otherwise of articles or
advertisements placed.

All logo's, legends and artwork
remain the property of SLROC
and may not be reproduced
without permission from the
Committee.

**©2002-2019 Suffolk Land
Rover Owners Club Ltd**

We would like to thank
BETTAPRINT Woodbridge Ltd
For their help in producing
Nooze

SLROC Supports both national
and local 4x4 response groups

Cover Picture

Tony trying to get me muddy!!
He succeeded...

I am writing this after a chilly morning at the club for the driving day. There were plenty of interesting moments, mainly thanks to the helpers and Toby who worked on the courses during the maintenance day on the Saturday! Also thank you to those who filled the holes on the driveway, I wasn't wincing in Flo as she wasn't dragging her belly on the floor when going through the potholes!!

So I feel the need to make an apology following on from last months Nooze! Sorry to Jane, whose article was unfortunately half covered by a picture for those who receive the printed version of Nooze. I have included the second half of Jane's trial writeup in this months edition, which is all uncovered as it is definitely worth the full read! Lesson learnt, to double check each page before sending Nooze to printers... doh!

In this months edition, there are the minutes from February's committee meeting and also the approved minutes from last year's AGM to have a read through. There is a reminder about the next interclub trial which is on the 5th May, and for the autojumble which is happening at April's driving day. Graham has also started a new thread: Around the World with Land Rovers which would be great if other members could get involved!

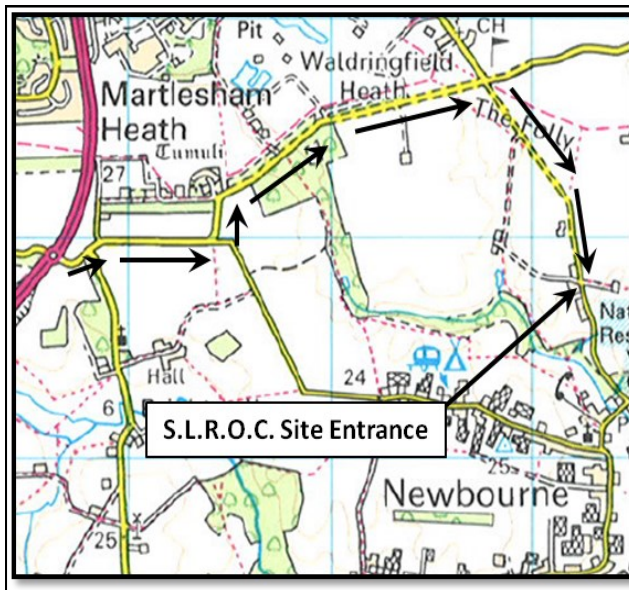
Just a quick note to all members about the details that are held by the club. Please let Niki know if you have changed any details such as your address, telephone number or email. If your details are wrong you may miss Nooze, or any other correspondence sent by the club.

That brings me on to start thinking about the contents of next month! Not only will I be busy writing my assessments for uni, but will be considering information about upcoming shows in Nooze, which is very exciting! Ever since joining the club, the show season has always been my favourite, and lets hope we can have as good of year as we did in 2018!

See you all soon...

Amy

Directions to the Newbourne club site



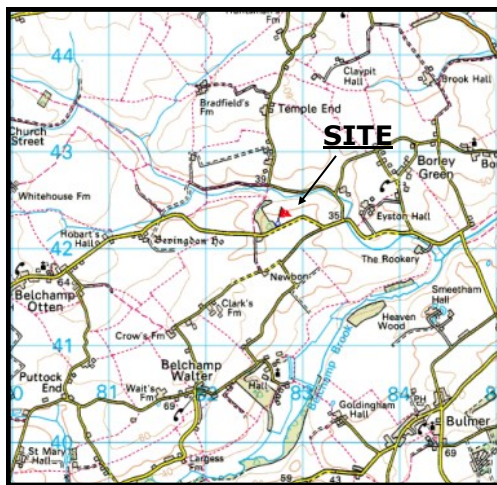
The club has its very own off-road driving site which we use monthly for weekend events, and competitions. The site is situated to the east of Ipswich, near to the village of Newbourne. Strict rules must be adhered to when using the site, to protect the safety of all users. Please keep your speed down around the village, and especially on the access track which has a 5mph limit. See you there!

Badwell Ash



OS sheet 155 grid ref TL 000 693

Snugg's Pit



OS sheet 155 grid ref TL 826 421

Chat From the Chair

Having drawn the short straw... not really. I'm here writing my first Chat from the Chair. I've got some big shoes to fill, following Andy, and Chris before him, but I will give it a go. As I will be away for most of March and April, I thought I would start writing this before I head off to explore other parts of the world.

Re-iterating what Andy has said, the club has a great committee that work well together doing their best for the members, and we are all members working to keep the Suffolk Land Rover Owners Club the best in the country.

As I am writing this, all the March events haven't happened yet, so I can't say well done or pity that was cancelled. That brings us to April. Off to Wales for a week: Laning, admiring the scenery, checking some local eateries, I will be back for the Winch Training Day on 27th and don't forget hunt out all your Land Rover odds and ends from your garages and workshops for the Driving Day and Auto Jumble on the 28th.

The charities we are supporting this year are going to be - Lighthouse, which supports women and their children away from domestic abuse, and - Over the Rainbow, a Children's Charity who are there to support families with children that are living with a serious illness or disability. Their aim is to offer some financial support to enable the child to receive specialist equipment to improve their daily living or to provide fun days out to bring back a missing smile.

2018 was an excellent year for the club on the money raising front, hopefully we can keep it up for this year. The start of a four month show season will keep us on our toes, and it is only around eight weeks until the Suffolk Show, our first, busiest and hopefully our best earner, something to look forward to.

It would be nice to see winch trials back on the club site, we need members to take part, also volunteers to assist in setting the trials. This also applies to trials off sight at Snuggs Pit and Badwell Ash. The trial at Snuggs Pit on 24th February was cancelled due to lack of someone to set. It would be a great shame to see the demise of the Winch trial. If you could help set a trial, feel free to contact our Competition Secretary Richard Gilmore Snr.

All the best.....

Pat.

EVENTS PLANNER 2019

This planner is intended as a guide and as such any event may be subject to change.

<u>When</u>	<u>Club Event</u>	<u>Where</u>	<u>Org</u>
April 27 th	1 st Training Day & Camp Over	Newbourne	P. Corps
April 28 th	Driving Day & Auto jumble	Newbourne	R. Gilmore
May 5th	Interclub CCVT	Pentley Lake	TBC
May 18th	Novice Winch Trial & Camp Over	Newbourne	TBC
May 19 th	Driving Day	Newbourne	G. White
June 15 th	2 nd Training Day & Camp Over	Newbourne	TBC
June 16 th	Driving Day	Newbourne	TBC
July 13th	Tyro CCVT & camp over	Snuggs Pit	R. Gilmore
July 14th	Punch Hunt	Snuggs pit	R. Gilmore
July 20 th	Maintenance day & Camp Over	Newbourne	TBC
July 21 st	Driving Day	Newbourne	TBC
Sept 1st	CCVT & Interclub	Badwell Ash	M. Whitting
Sept 8 th	3rd Training Day (Novice Driver)	Newbourne	P. Corps
Sept 21st	Tyro CCVT & Camp Over	Newbourne	S. Bareham
Sept 22 nd	Driving Day	Newbourne	TBC
Oct 19th	"Ladies/Junior" Tyro CCVT & Camp Over	Newbourne	C. Finbow
Oct 20 th	Driving Day & Auto Jumble	Newbourne	C. Finbow
Nov 3rd	Single Vehicle Winch trial	Snuggs Pit	R. Lambourne
Nov 17 th	Children in Need Driving Day	Newbourne	A. Jeff
Nov 24th	CCVT	Snuggs Pit	A. cutting
Dec 29th	Mince Pie Driving Day	Newbourne	G. White

*****Events requiring Pre-Booking are in bold type*****

Driving Days - **£10*** - Driving Day Junior Afternoon **£5**

CCVT and Tyro Trials - still only **£15 Pre-Booked**

CCVT and Tyro Trial - Arrive & Drive (where permitted) **£20**

***Don't forget: It's only a fiver for each extra driver**

SHOW PLANNER 2019

This planner is intended as a guide and as such any event may be subject to change.

<u>When</u>	<u>Show</u>	<u>Where</u>	<u>CoC / Org</u>
May 29 th —30 th	Suffolk Show	Trinity Park	T. Alden
June 22 nd —23 rd	Heveningham Country Fair	Heveningham	T. Alden
Aug 3 rd —4 th	Festival of Wheels	Trinity Park	T. Alden
Aug 11 th	Club Open Day	Newbourne	A&S Berwick
Sept 14 th —15 th	Henham Steam Rally	Henham Park	R. Heather
Sept 14 th —15 th	LRO Show	Peterborough	TBC
Sept 22 nd	Warren Classic Car Show	Danbury	TBC

Suffolk Show

For those of you interested in helping at the Suffolk Show, there is a post on the forum for you to put your name down. Spaces are limited we have a maximum of 50 people passes and 30 vehicle passes per day. The list will close on the 3rd May so that Tim is aware of the final numbers.



Please Support Our Advertisers As They Support Us!



**30 YEARS
EXPERIENCE**

LAND ROVER SPECIALISTS

- ✓ *Service*
- ✓ *Maintenance*
- ✓ *Parts*
- ✓ *Accessories*

50% cheaper than the main dealer plus great discounts for club members!

WWW.JSF4X4.CO.UK

01206 396644

**Unit 1, Causeway End Industrial Estate, Lawford,
Manningtree, CO11 2LH**

Please mention 'Nooze' when replying to adverts

Meet this years charities!

Lighthouse Women's Aid

Lighthouse Women's Aid is a local charity working with women, young people and children affected by domestic abuse across Suffolk. We are an established charity, having operated in Ipswich for over 40 years. **We help our beneficiaries find a brighter future, free from domestic abuse.**

What we do.

Lighthouse has always provided refuge accommodation for women and their children needing to flee domestic abuse to ensure their safety. We continue to run a refuge today, housing up to 15 women and 27 children at any one time. Whilst in our care, our team of specialist welfare workers will provide practical and emotional support and work towards each individual or family moving back into a home.

In 2012, Lighthouse opened a Community Women's Centre in Ipswich which provides a wide range of services to women and children experiencing domestic abuse. Last year over 1000 women and children accessed these services at the Community Women's Centre.

Most recently, we have developed two new training services:

Domestic abuse awareness training for the workplace. Domestic abuse costs the UK economy £1.9 billion in lost output every year and 75% of people experiencing abuse are targeted in the workplace, whether that's harassing phone calls or abusive partners/ex-partners arriving at the workplace unannounced. We help businesses understand the simple steps they can take to support employees who are suffering abuse and in doing so, retain valued staff as well as potentially save a life.

Expect Respect – a Healthy Relationship Programme for schools. The objective is to support young people to stay safe and enable them to identify unhealthy relationships. In the last two years we've delivered Expect Respect to 1469 children and young people across 10 schools and demand is growing.

Why what we do is important.

Domestic Abuse has no boundaries – it affects people regardless of geography, wealth, race, gender, religion, disability, age or sexuality. Domestic abuse is a major issue in our society today and as an established and specialist domestic abuse charity, Lighthouse are working hard to change the troubling picture we see today in Suffolk. The reality in Suffolk is the same as that reflected in the national statistics below.

In the UK, 1.9 million adults experience domestic abuse each year. That's 1.2 million women and 713,000 men.

Over 90% of high risk domestic abuse victims are women. In the UK, a woman is assaulted in her own home every six seconds. Two women a week are killed by a current or former partner. The issue continues to affect young people, with 75% of girls and 50% of boys reporting some form of emotional abuse. In addition, 1 in 4 girls have reported experiencing physical partner violence in a relationship. (NSPCC).

Lighthouse

For a brighter future, free from domestic abuse

LAND ROVER SPECIALIST



Servicing, Repairs and MOT work
Vehicle Preparation

Autologic Diagnostic

Visionaire Tracking Systems

10% Discount for club Members ✳

*** On Labour Only**

SWB, Mutford Garage, Nr Beccles. NR34 7UL



Around the World with Land Rovers

I thought it would make an interesting article for Nooze. That when on our travels and we see a Land Rover we take a photo then on our return send the photo and a short description for Amy to include in Nooze. Can we find 80 in different places within a year?

To start us off I have three from recent travels.

Canary Islands

While visiting La Palma, one of the Spanish Canary Islands I was pleasantly surprised at the number of Land Rovers I saw. Not recent imports but a range of Series, Defenders, Discovery 1's and Santana's (do they count). Most of the Series and Defenders are still being put to good use as they are the principle workhorse of the banana plantations. In general they appeared in good condition, I guess the climate and no salt on the roads helps. There was a Defender with large roof rack being used by a paragliding business to transport parachutes, and pilot to the launch site which involves steep climbs over rough ground. The Island just 47Km x 28km stands 4,000M from the sea bed and rises a further 2,400M above sea level so there are plenty of challenging inclines to negotiate.



Italy

Security around Rome is reassuringly obvious, with armed military stationed outside the principle tourist sites of which there are many. Land Rovers are one of the military's principle mode of transport. As I was about to take a photo of this example the soldier wanted to show me his gun. Apparently they are very sensitive about people taking photos, but once I explained I was a member of the SLROC he relaxed and I got my photo.



USA

Land Rovers of all shapes and sizes, although the bigger the better, continue to be popular in the US. Even the Discovery's have 5 litre petrol engines as 'gas' is about a third of UK prices. However there is an increasing demand for iconic Defenders, which have become a symbol of individuality and possibly quirkiness. Let's face it they are not Freeway cruisers. Importers are buying and selling for what I consider to be crazy sums. To be imported the vehicle must be over 25 years old, the chassis and engine have to be correct for the vehicle, proof of ownership is required (V5 is not proof) and all has to be in order before it leaves the UK as failure on these points could result in the vehicle being crushed by US Customs. Finding suitable vehicles is difficult, where dealers recognise this and as a result charge top price typically £13,000 for those in photos. The shipping and import taxes will add some \$6,000, then there are other costs such as converting the lights to left hand drive, replacing items that the UK dealer didn't happen to mention and generally making it look desirable. So eventually the classic Land Rover you have been saving for is rapidly reaching the price of a Tesla Model 3, which must be at the other end of the motoring scale.



Meet this years charities!

Over the Rainbow Children's Charity



Making dreams come true

The Charity was founded by myself in October 2015 with the aim of supporting living in Suffolk with a serious or life threatening illness by providing specialist equipment to help with day to day living or to aid a child's development.

We believe the provision of specialised equipment has a direct and immediate impact on a child's quality of life and independence, and is vital in helping them to overcome obstacles and achieve their potential. Specialist equipment can include nursing beds, sensory

equipment, wheelchairs, walking frames, tricycles and other mobility aids.

Every disabled child deserve the opportunities to be involved in activities that other children take for granted. Many disabled children would not be able to ride a 'standard' bike for example, so what we can do is fund specially adapted trikes so that disabled children can have same fun just like abled children and enjoy a little independence from their families whilst gaining valuable exercise.

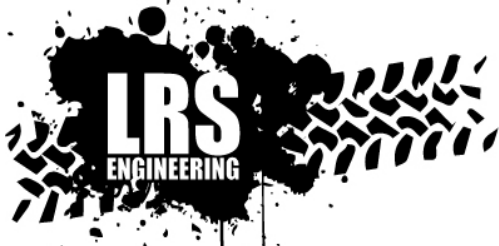
The Charity has supported 18 children thus far with such items as wheelchairs, hoists, sensory equipment, epilepsy monitors, specialist pushchairs and seating.

The Charity has no paid employees, all trustees including myself are volunteers who all have full time paid employment doing the charity work in our spare time.

We raise money by organising our own events, attending externally arranged events as well as public and corporate fundraising and donations.

All money that comes into the Charity is received in order to support the children and a small amount for administrative expenditure such as our insurances, telephone, printing and postage. We have one liveried vehicle which is used to store and transport our event equipment. Other than this vehicle, we use our own cars without personal expense claims.

When a family applies to us for support, the trustees would collectively agree if we can support the child and if so, this is only approved once we are in receipt of a letter from the child's Occupational Therapist confirming the child's medical condition and confirmation that the requested equipment is appropriate for the child's needs. The child's parents/guardians are responsible for providing us with a formal quotation from the equipment manufacturer/supplier. Once aforementioned has been received, we would then place an order for the equipment directly with the supplier.



**Unit 6 Westmead,
Hedingham Road
Gosfield, Nr Halstead
Essex CO9 1UP
01787 469553**

www.lrsengineering.co.uk



Bearthach
LAND ROVER PARTS



B WILDBEAR

AllMakes4x4
Quality, Value and Performance

TerraFirMa
Serious 4x4 Accessories

*Servicing, Repairs, Diagnostics, Programming,
Genuine & Non Genuine Parts Supplied
Registered To Land Rover Online Service System*



Find us on:
facebook®

Well for those of you that go to the trials will know, you change around places, so everyone gets a fair chance, so number one had dropped to the last place and we were due to go second. There was me thinking I had time to utilise this time for a warm drink. Oh no, this time it was suggested I walk the course, so I knew where we were going. Obliging I thought what harm can it do? Well two very close encounters later with deep mud and puddles, thanks to very stubborn brambles that seemed to come out of the ground from nowhere and trap my feet, I have found I'm actually quite good at the one legged wellie skiing!!

Not showing any signs of 'I was wrong assuming this was easy' I get back in the passenger seat with more of a grimace than a smile and off we go. Soon in to this stage, I realised I was going to have to hold my nerve, as it was just as bumpy and slippery and muddy.

After two more sections, I was beginning to think that the cold wasn't that bad after all and maybe I should sit out sections 5 & 6, but to my delight, down came the rain and sleet and oh boy it was cold. I gracefully gave in and decided that the bumps, bangs and war wounds were well worth the warmth of a V8 heater!!

The end of the day sections could only mean one thing.....Fish and Chips and a good catch up with everyone huddled in the club house.



Once we had all been fed and watered, it was time for everyone to show off their extra set of lights and how this was going to help them see the canes in the night sections. All excited, thinking Richard wouldn't need my help as the lights would show him the way, I asked him to turn Wesley's on. It was at this time that yet again realisation set in, that his 'I haven't had time to fit extra lights' could only mean one thing..... I was going to be co-driver again for the evening sections. Bearing in mind Wesley's lights are not much brighter than candles normally, this was going to be a challenge!

This was going to be fun, I say that very loosely!

Off we went going through the same sections as we had done previously with our candles lighting the way. It was definitely an eye opener, as everything seemed so much different and you really had to concentrate on what was ahead. As expected there was a lot of banter and competitiveness increased as the sections went on and dare I say some near misses and some shrub maintenance throughout the evening!!

Well I survived my first trial as a passenger and Richard actually came first place, (I think it was the co-drivers help personally)!

As much as I was glad to be going home to a nice warm house, with heated seats in my Landy, I can honestly say, I thoroughly enjoyed the day into night.... But don't tell anyone!



Mansfield 4x4

BURY ST. EDMUNDS LTD

01284 767174

www.mansfield4x4burystedmunds.com

**Parts, Accessories, Service, Repair and Diagnostic Testing
for all models of Land Rover and Range Rover**



MOT Testing for all cars

3D wheel alignment available



**Winch mounts • Side bars • Underbody protection • Exhausts
Engine and Clutch upgrades • Wheels and Tyres**

And much more....

Email: info@mansfield4x4.net



Unit A1 Chase Road, Northern Way Ind. Est., Bury St Edmunds, Suffolk, IP32 6NT



AllMakes4x4
Quality, Value and Performance

TerraFirma
Serious 4x4 Accessories

ODYSSEY
THE EXTREME BATTERY

DRAPER

G

S

WARN

BRITPART

Bearmach

GORCE

LightFORCE
PERFORMANCE LEATHER

GOODWINCH.COM

SUPERWINCH



Mansfield 4x4
BURY ST. EDMUNDS LTD

01284 767174

www.mansfield4x4burystedmunds.com

***Free air conditioning
efficiency report***

***Free 4 wheel alignment check
with a printed report.***

***Air conditioning regas for
R134 systems £45 + vat***

MOT test class 4 £39.95

MOT test class 7 £47.95

***Parts, Accessories, Service, Repair and Diagnostic Testing
for all models of Land Rover and Range Rover***

Email: info@mansfield4x4.net

Unit A1 Chase Road, Northern Way Ind. Est., Bury St Edmunds, Suffolk, IP32 6NT



Meeting held Sunday 18th March, 12.45pm

Present

Andy Jeff (AJ) (Chair), Richard Gilmore (RG), Jane Gilmore(JG), Graham White(GW), Michael Whitting (MW), Tim Alden (TA), Si Barham (SB), Jane Barham(JB), Pat Corps (PC), Gareth King (GK), Katie Nurse (KN), Steve Nurse (SN) + 35 members.

Minutes of previous meeting Approved as a true account. Proposed SB, Seconded CF

Driving Days

Over the past year the members have proven that driving days are as popular as ever and though numbers continue to be consistent the atmosphere of driving days seems to get better and better pushing us forward as a friendly club!

There have been changes to the site in the past year though, an excellent maintenance weekend in the middle of the year saw the site properly spruced up due to the efforts of the volunteers. For the first time in many years there were also course changes some of which are struggling to bed down.

It's been the wettest Autumn/Winter for years and this has caused it's fair share of problems on the yellow. On the black we were very aware that it had come back to essentially being an extension of the yellow where previously it had offered challenges to the most adventurous of drivers. To get some of this back we made parts of the black 'very challenging' with the view that they would bed down over subsequent driving days resulting in good but not impossible challenges and this is now coming to fruition with all of the courses properly settling down and the black now open for all with easy and hard options in a number of locations. Things aren't without problems and we are continuing to look for solutions to challenging areas on the yellow.

Competitions

As expected, competitions have been very well attended throughout the year. Richard has slotted in well to the role of comp secretary and is making great progress in developing this aspect of the club. A good example is the addition of the mid year tyro at Snuggs that is open to all comers.

This year there is the extension of trialing by engaging in the interclub series of three CCVT's opening things up to the interesting challenge of new venues different competitors and an insight into how other clubs run things.

One thing I'd like to see this year is a training day for marshals and course setting that will be open to all and will help spread the knowledge of 'the few' much wider within the club - watch out for details.

Quiz night? I suppose that's a competition too and thanks to Si and Jane for organizing last year and to Chris and Heidi who are organizing this years quiz night.

Shows

Last year we saw the short notice and surprise announcement that Stonham Barns were no longer able to let us offer rides at events there. I know we didn't make lots of money for our charities there, but all the same they were friendly well attended events on our part and I for one miss them.

Consolidation of other shows

The Suffolk Show continues to be our flagship event and is somewhat at capacity every year however it is very much weather dependent, and it only takes gales or rain or both to severely impact our bottom line for the year.

I'd like to thank all of our show organizers and everyone else who helps out with whatever job, but thanks also go to Jane Gilmore who stepped into the breach at the eleventh hour to organize our club open day.

This yea will see the addition of a new show at trinity park, the Festival of Wheels and if anyone wants to help with organization of this event just let me know.

Charities

Though our charity total was slightly down on last year, it was just that, only slightly down and with the consideration that we had no Stonham events and the Rock Barrack

event doesn't run every year we didn't do that bad overall only missing out by a few hundred pounds when the potential was more like fifteen hundred pounds. We always like our charities to attend our events, but this year, attendance was taken to a new level by the RDA who not only attended every show but also became an integral part of our show crew. On top of that, The Longshop Museum gave up their pitch at Heavingingham to swap with us just to ensure we could actually operate as planned! Indeed it was the level of support by charities that helped determine the distribution of the charity pot at the end of the year.

Though last year we took a decision to share our charity pot wider and took on four charities, through the year this eventually proved too much to manage and so this year we're going to switch back to two charities.

As we've often said though a charity may not make it in in one year, the suggestions are often kept for following years and that reflects in this years charity choices who are: Parkinson's UK and Bike Active

Health of the club

Whilst Michael will speak about the club finances shortly I can say that having talked to a number of other similar clubs and organizations this year no one quite accomplishes things to the level that we do. The effort put into training by Pat and the trainers certainly makes us stand out but it was the events of early last year that made us as a club pull up our boot straps and properly sour out our insurance, documentation, risk assessment and general safety considerations to a level not considered by many other organizations and are certainly now standing us in an excellent position. Indeed when the IOPD 'surprise' inspection was carried out it went extremely well and many compliments were issued. Technically we have never been better but there are still one or two outstanding jobs remaining for me in my final year as club chairman.

Membership Report - by Jane Barham

Membership for 2017 totalled 305. This is slightly down on previous years and again reflects the ebb and flow of membership in any club. So far the total membership for 2018 stands at 244 for 2018; which is slightly up on this time last year.

The current membership is made up of : Full = 151, Joint = 69, Junior = 20

August's open day saw 15 additional members join our Club. During December renewals there were 19 new members. Also during this period we saw Charly Wilson and Bethany Rout graduate to adult members – congratulations to them both.

There has been a shift in how membership has been renewed for 2018. We have seen members spreading their renewals between the end of Novembers and January alleviating the mad rush for December. With the demise of cheques there has been an increase in the number of electronic bank payments. As a reminder please ensure that your transactions include your membership number. This helps us to match the payments to the relevant member especially in the event of identical last names.

Moving forward you may well have seen that Simon and I will be standing down after today from the Committee and our roles as Vice Chair and Membership Secretary. We have both been working seamlessly on the Committee for the past 3 years and feel that it is time to hand over the reins. With that said we will not be leaving the Club and will continue to help out where we can.

Jane finished by welcoming Katy Nurse to succeed her as Membership Secretary.

Treasurer's report – by Michael Whitting

Total income for the year was £28,333.65 Expenses were £30,379.98 Net profit was £ - 2046.33 This loss figure is not a cause for concern as the bank balance is much the same as previous years. This is mainly caused by when transactions have fallen in this accounting period.

Income

Membership fees - £4,660 as against £4,620. Basically the same, not a cause for concern.

Off Road Activity - £6,289 compared to £5,063 in 2016. Generally better attendance at events and driving days, also very good turnout for the first one day membership winch challenge.

Other Club Activity - £16,809.73 compared to £15,371. Up on last year; mainly from more shows attended. Thrown off by 3 2015 charity cheques being cashed in this period, but actually is lower than last year due to the club attending fewer events this year. i.e. Rock Barracks open day and Stonham Barns.

Newsletter Advertisements - £525 slightly down on last year as there was a small change in advertisers.

Account Interest - £0.00 but we do get free banking as I have said before.

Gross Income - £28,334 excluding the correction for charity payments, this is for the most part, the same as last year. So I would consider this a good thing.

Expenses

Creditors None

Membership Fees - COSTS £212 compared to £666. Big drop, this is because of the purchase of 3-4 years-worth of club stickers in one go last year.

Off Road activity (NEWBOURNE) - £5,683 compared to £4,960. Higher expenses this year can be attributed to hire for the course revamp, extra fencing costs, new posts and the retraining course for the marshal trainers.

Other Club activity - £17,975 slightly thrown off by 2016 charity cheques as previously mentioned, but otherwise as expected. Consists of 2017 charity money going out and some purchases of the trinkets that we now sell at shows.

Newsletter - £3,575. Much the same as last year. Only reason for the slight increase is that more than 12 months of Nooze issues were paid for in the year.

Insurance - £2,934 quite a sizeable increase over last year. As you may remember we had to cancel the January '17 driving day as we found out that the Insurance broker had change our cover without us knowing to the point that we weren't really covered. Well this increase reflects the an interim payment to cover us for the rest of 2017 and then an increased Renewal in November which equates to around £1,400.

Nett Profit - £ - 2,046. I don't consider this any cause for concern because we have had quite a lot of Exceptional expenses this year and we will not have to pay for these for likely 3-4 years.

Conclusion - I will be keeping a close eye on the outgoings this year but I am confident that 2018 will see us in the Black once again. The most important thing is that the bank balance staying constant.

Election of Officers (who serve a 3 year term)

Vice Chair - S.Barham proposed Richard Gilmore, seconded G.White. Richard was duly elected following a majority vote, Treasurer - A.Jeff proposed Michael Whitting, seconded S.Barham. Michael was duly elected following a majority vote.

Chairman - Andy Jeff re-election due 2019

Secretary - Graham White re-election due 2020

Election of Committee members Safety & Training Officer - Pat Corps, PR & Show Co-Ordinator - Tim Alden, Membership Secretary - Katie Nurse, Nooze Editor - Jane Gilmore, Competition Secretary - Richard Gilmore, Club Site Manager - Steve Nurse Proposed on block - A.Jeff, Seconded - S.Barham, carried following a majority vote.

AJ reminded those present that the Club needs enthusiastic people to help run the Club and that anyone interested in joining the Committee should initially talk with any of the existing Committee to better understand what is involved.

Any Other Business None

Meeting closed 13.20

Minutes approved ... A. Jeff...

HWB AUTOMOTIVE

INDEPENDENT LAND ROVERS • CLASSIC & SPORTS PRESTIGE SPECIALISTS

LAND ROVER SPECIALISTS

LAND ROVER MASTER TECHNICIAN
OVER 10 YEARS EXPERIENCE

ALL MAKES OF SPORTS, CLASSIC &
PRESTIGE CARS SERVICED & REPAIRED

FULL LAND ROVER DIAGNOSTICS

PERFORMANCE UPGRADES & BESPOKE
MODIFICATIONS UNDERTAKEN

RESTORATION & RECOMMISSION WORK

MOT PREPARATION & MOT'S

AIR CONDITIONING SERVICING

ATF TRANSMISSION
MEGA FLUSH SERVICES

Find us at

UNIT 7B | BLYTH RD IND. ESTATE
HALESWORTH | IP19 8EN

T 01986 873 999

W HWBAUTOMOTIVE.COM

E INFO@HWBAUTOMOTIVE.COM



UNLEASH THE POTENTIAL

ALIVE™

ALIVE TUNING
AUTHORISED AGENTS
ECU REMAPPING AND PERFORMANCE SPECIALISTS

Meeting held Friday 8th February, 7.30pm

Minutes prepared by Graham White

- Present** Richard Gilmore (RG), Graham White (GW), Pat Corps (PC), Andy Jeff (AJ)(Chair), Tim Alden (TA), Amy Berwick (AB)
- Apologies** Michael Whitting (MW)

Members with special duties not required to attend Committee.

Amy Berwick (AB)(Nooze), Toby Parker (TP)(Off Road), Niki Broadley (NB)
(Membership)

Minutes of previous.

Approved as a true account. Proposed GW, Seconded PC

Matters arising from previous meeting.

Outstanding actions. (NB Action reference = Date + numeric i.e. MMDDNN)

- 110311 – Membership Sec to have access to bank acc to check memberships – **Action MW**
- 011201 – Action closed
- 011204 – Driveway potholes to be filed – **Action TP**
- 060107 – Action closed
- 090704 – Organise fire extinguisher service – **Action PC**
- 100503 – Confirm current value expectations of the 5kW generator – **Action MW**
- 110203 – Copy & Post IOPD Events notice – **Action AJ**
- 010401 – Change Bank if Membership Sec still has no access to account after January – **Action MW**
- 010402 – Request summary of Raffle accounts from Heidi Finbow (HF) – **Action AJ**
- 010403 – Set up Toby Parker (TP) with a email account – **Action AJ**
- 010404 – PC to loan the Club a generator for its use – **Action PC**
- 010405/6 – Action's Complete
- 010407 – Obtain chosen charities logos for trailer – **Action RG**
- 010408 – Action Complete
- 010409 – Amend website to show Niki Broadley (NB) as new Membership Sec. – **Action AJ**
- 010410 – Action Complete
- 010411 – Organise NB access to bank account (action 110311 & 010401) – **Action MW**
- 010412 – Discuss with Paul Whitting potential Committee position – **Action AJ**
- 010413 – Contact G.Nurse re 5kW generator – **Action PC**
- 010414/5 – Action's Complete
- 010416 – Visit / discuss the Clubs possible involvement at the Warren Classic – **Action TA**
- 010417/8 – Action's Complete

Actions arising this meeting

- 020801 – Ask the users of problematic emails if they have an alternative account or if they can establish SLROC Nooze emails as legitimate with their ISP. – **Action AB**
- 020802 – Cancel the winch trial – **Action RG**
- 020803 – Alter driving sign on sheets to include a driving licence declaration. – **Action PC**
- 020804 – Ensure XXX size T shirts are available in Purple – **Action TA**
- 020805 – Obtain CF signature to enable bank mandate change – **Action MW**

Calendar items

Contact Charities - done
Contact Suffolk Show - done
Pay site rent - done

Membership

Total = 224 full = 139 Joint = 61 Junior = 24

New members

Carly Jones – Ipswich Darren Mockford – St Osyth John & Bev Shibley –
Norwich

Former junior Ellie Johnson – Halstead

Proposed GW Seconded AJ

Finance report

£5,316.36 in the bank - £3,183 in cash total = £8499.36 is ours i.e. all of it.

all 2018 charity donations cashed.

Bearmach show T-shirt donation received.

All Bettaprint invoices paid inc. Feb issue.

Site rent cheques sent out on the 7th Feb.

Nooze invoices will be sent out shortly.

MSA permits paid for both trials.

AJ expenses paid.

JB expenses paid.

Nooze

AB reported some difficulties with sending Nooze by email, particularly btinternet accounts. This was a known difficulty caused by BT algorithm which detects multiple mail shots with an attachment and little or no email content as spam.

It was confirmed that issuing a 'full' Nooze each month was the preferred situation but that to do so required members to come forward with enough articles and material. Where insufficient material was available a 'Lite' Nooze would be issued which contained the basics, events, calendar, adverts, etc.

Safety & Training

PC confirmed the April 27 Marshal requalification day currently has 2 spare places.

In response to a question raised by a member suggesting winch trained Marshals should be identified from non-winch trained Marshals, PC confirmed that with a couple of exceptions all Marshals are winch trained. Those that are not, do know not to supervise winch recoveries.

Shows

Suffolk Show

TA reported that a meeting had taken place with Phillip Ainsworth, during which the proposed agreement between the Club and SAA was discussed. TA confirmed that this was well received, and that confirmation of its acceptance was now expected. It has also been confirmed that Gotelee Solicitors will sponsor the Club site at the Show, that our own sponsors Bearmach and others will be able to advertise at the event. It has been proposed that Gotelee provide a gazebo or similar cover for the queue waiting for rides and that they will provide some 'treats' for children.

Heveningham

TA reported that discussions had taken place and that all was in order, with further discussions planned for April.

Festival of Wheels

Bearmach will be sponsoring this event.

Club Show T shirts

Bearmach has sponsored the purchase and printing of the shirts, the print design has yet to be confirmed. After some discussion and by majority agreement PURPLE is the chosen shirt colour.

Competition

RG Reported the Day into night trial and Tyro were well attended. However, it was agreed that the proposed winch trial to be held at Snuggs Pit should be cancelled as there has been little or no interest shown.

The next competition would be the inter-club event for 24 March being organised by Beckland LR Club.

Correspondance

Newbourne Village Hall – A thank you for the donation given – To be published in Nooze

Any Other Business (AOB)

GW reported that the deadline for nominations had passed with none for the position of Chair. After some discussion PC volunteered to take on the position on an interim basis.

AB advised that she and her mother (Sarah) would organise the Club's Open day.

Meeting closed 22.50

Next Meeting 7.30pm Friday 8th March at the Club

Minutes approved

..... **P.Corps 8/3/19**



HILLCREST

VEHICLE SOLUTIONS

LAND ROVER SPECIALISTS

- **Specialist Repairs** requiring body removal
- **Chassis repairs** and replacement
- **Engine conversions** and replacement
- **Rebuilds**

- **MOT**
Discount if booked with a service
- **Servicing**
We carry out servicing to manufacturers specifications
- **Repairs**
All general repairs
- **Diagnostics**
Using the latest diagnostic technology
- **All makes and models welcome**
Modern and classic

**All mechanical work guaranteed for
12 months or 12,000 miles**

Hillcrest Vehicle Solutions Ltd, Hillcrest Garage, Cratfield Road,
Huntingfield, Halesworth, Suffolk, IP19 0QB

Tel: 01986 798668 Email: info@hillcrestvs.co.uk

Please call Jono Rout or Sandra French
for a no obligation quote or friendly advice

SLROC CLUB SHOP

Clothing, Stickers, etc

**All clothing is available to order in a range of sizes and colours,
just ask!**

T-Shirt	£14.00
Polo Shirt	£16.00
Sweatshirt	£19.00
Hoodie	£20.00
Contrast Hoodie	£22.00
Grizzly Fleece	£30.00
Chunky Zoodie	£27.00
Waterproof/Windproof Fleece	£50.00
Children's T-Shirt	£12.00
Children's Polo Shirt	£13.00
Children's Fleece	£23.00
Children's Hoodie	£16.00
Children's Hi-Viz Vest	£4.00
Baseball Cap	£10.00
Embroidered Beanie Hat	£10.00
Door / Panel Sticker	£4.00
Small Sticker	£1.00
Window Sticker	£1.00
www.slroc.uk.com Sticker (Black, Orange, Silver, Yellow, Red, Blue & White)	£3.00
Key Ring	£1.00

**Prices are correct at time of going to print but may be subject to
change.**

SLROC CLUB SHOP

Recovery Gear

2M Bridle	£21.00
5M Rope	£32.00
7M Rope	£40.00
9M Rope	£45.00
Bow Shackle	£8.00
'Jate' type Recovery Ring	£18.00
Battery Clamp	£6.00

Prices correct at time of going to print but may be subject to change.
The Club Shop is at most events, and items are also available from:

Spencer White: - Email: clubshop@slroc.uk.com

Please get in touch if you wish to collect items from a Show.
Items will soon be featured on our web site at **www.slroc.uk.com**



Don't forget the... Interclub CCVT Trial

An interclub competition has been arranged with Breckland Land Rover Club and Norfolk 4x4. The first round has been held at Burgh Castle on the 24th March, making the next event at Pentley lakes on 5th May. This event is open to all SLROC members. If you wish to enter or need any more information please contact Richard Gilmore via compsec@slroc.uk.com or via the forum.

Autojumble

Time to empty your garage of all those bits you've been meaning to move on for years... or alternatively to find a load of stuff to add to the ever growing pile of spares you may have! At the April Driving Day on the 28th there will be an autojumble for you all to bring any spare Landy bits to sell or to find any bits you may need.



Bearmach is pleased to offer
**Suffolk Land Rover Owners
Club**

A **10%** discount code to use on our website
www.bearmach.com

USE DISCOUNT CODE: **SLROCTEN**

Subject to Bearmach's Terms and Conditions. 10% discount does not apply to clearance stock.
Cannot be used in conjunction with any other offer.

**The Club will receive 10% of
your order value as cashback
too!**



Everyone Benefits!



 **TRUSTPILOT**



Rated as Excellent
Discover what our customers
think about us

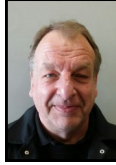


Worldwide Shipping
Same day international dispatch

CLUB CONTACTS

CLUB PRESIDENT

Ralph Lambourne



CHAIRMAN

Pat Corps
07887 500799
chair@slroc.uk.com



CLUB SECRETARY

Graham White
secretary@slroc.uk.com



TREASURER

Michael Whitting
treasurer@slroc.uk.com



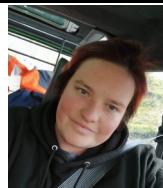
VICE CHAIR **COMPETITION SECRETARY**

Richard Gilmore
vicechair@slroc.uk.com
compesec@slroc.uk.com



MEMBERSHIP SECRETARY

Niki Broadley
membership@slroc.uk.com



OFF ROAD SECRETARY

Toby Parker
offroadsec@slroc.uk.com



CLUB CONTACTS

SAFETY & TRAINING OFFICER

Pat Corps
07887 500799
safety@slroc.uk.com



PR & SHOW CO-ORDINATOR

Tim Alden
pr@slroc.uk.com



CLUB SHOP

Spencer White
clubshop@slroc.uk.com



NOOZE EDITOR

Amy Berwick
07496 549234
nooze@slroc.uk.com



WEB SECRETARY

websec@slroc.uk.com
Andy Jeff



Please note: Some of the Committee Members have requested that details of their addresses are not published within the newsletter for personal reasons. Please do not let this put you off contacting any of the Committee, they will be only too glad to receive phone calls (as long as they are at a reasonable time of day, say **no later than 9:30pm**).

If you have any mail you wish to pass on to a Committee Member then it can be sent via any of the published addresses above. The Committee also respects the privacy of each and every Club member, and to that end, we do not give out details of Club members to any other organisation.

Important Information

On entering the access lane to the site, please adhere to the **5mph** speed limit. Failure to do so, may result in removal from the site with no refund of fees.

If only watching or socialising, please turn right to park in the rear car park. Do not park in the main car park or proceed to signing-on/scrutineering.

Trailers to be parked in designated area in main parking area.

If taking part in the event please stop at the signing-on hut first:

For insurance purposes, membership cards **must** be available for inspection at **any** club driving event, if requested. Only members holding a full UK driving licence* and who have **signed on**, may drive at any club event. *With the exception of 'Tyro Trials' where Supplementary Regulations may allow drivers of 13 years and upwards.

Then continue to scrutineering: **All** vehicles must be scrutineered prior to driving onto the courses. Minimum requirements for recovery points are two -points at the front with bridle, and manufacturer's tow hitch at the rear or two 'Jates' and bridle. Please fit bridle before scrutineering.

Seat belts (inc. lap-belts) must be fitted and worn by all occupants.

(No belt, no ride. This is for your own safety).

Once signed-on and scrutineered, you may continue to the parking area.

All loose items must be removed from the vehicle before going on the courses. Vehicles will be checked for these items and stickers.

15 mph site speed limit

No driving along the footpath at the bottom of the site, except at the designated crossing point for access to and from the Woodland Course.

All recoveries under the supervision, and at the discretion of a Marshal. All facets of winching operations may only be carried out by persons aged 18 and over, including rigging.

Pedestrians must not walk on the courses, only the access roads- this is for your own safety.

Children (under 16's) remain the sole responsibility of parents/carers at all times. Children must wear a Hi-Viz vest whilst outside a vehicle in all areas. Children must be accompanied by an adult in all active vehicle movement areas.

Dogs must be kept on leads and under proper control at all times.

It is the responsibility of the owner to clear up after your dog(s).

Do not drive roped-off areas.

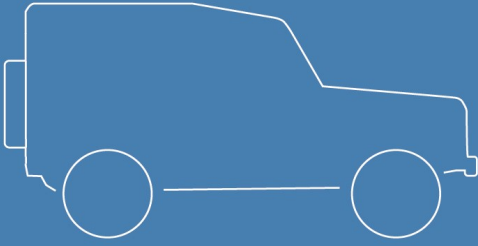
Do not remove ropes or posts unless instructed by a Marshal.

Strictly no drinking and driving. No motorcycles or quad bikes.

No tractor, Implement or overly-aggressive treaded tyres.

Please take all your litter home with you.

The Marshal's decision is final



Insurance tailored around you & your Land Rover

See how we measure up, call us on **0800 916 1288** and you could get a cheaper quote compared to online

At Adrian Flux we have over 40 years experience tailoring insurance to suit your specific needs. We don't believe in "one size fits all" when it comes to insurance, which is why you could save time and money by calling a member of our team directly.

Ask our experienced staff about:

- Club member discounts**
- Agreed valuations**
- Limited mileage discounts**
- European breakdown cover**
- Driving other vehicles**

Car Club Quoteline: 0800 916 1288

Authorised & regulated by the Financial Conduct Authority