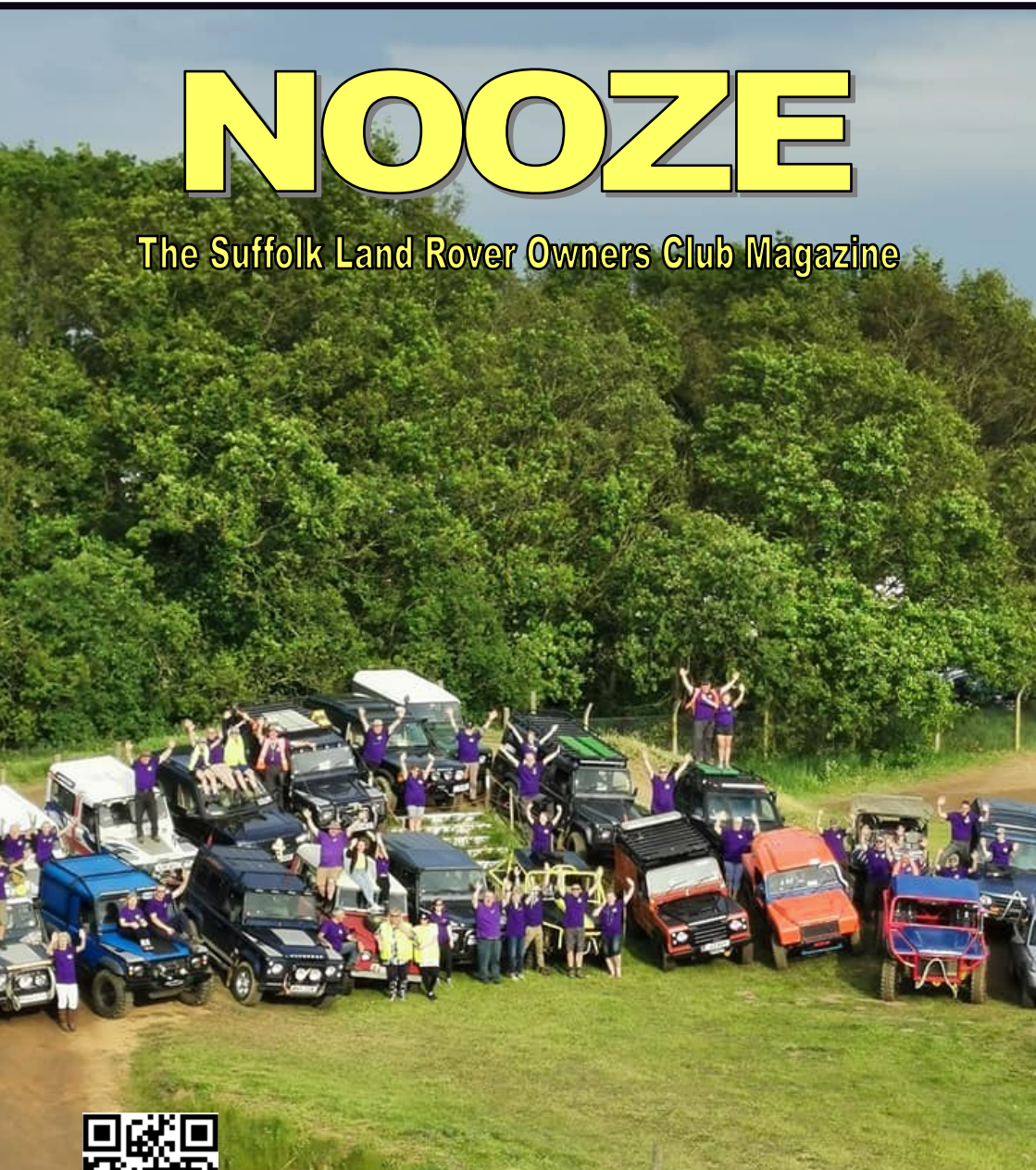




July 2019

NOOZE

The Suffolk Land Rover Owners Club Magazine



WWW.SLROC.UK.COM

FOR ALL YOUR LAND ROVER SERVICING NEEDS



- Fully Trained Land Rover Technicians
- The latest technology IDS & SDD diagnostics and repairs
- Competitive pricing with no hidden extras

LINDACRE LAND ROVER SERVICE CENTRE

2 Farthing Road, Sroughton Industrial Estate, Ipswich, IP1 5AP
Tel 44 (0)1473 461 751. Fax 44 (0)1473 744 048.

LINDACRE IPSWICH



GO BEYOND

Nooze News!

NOOZE

is the "mouthpiece" of the
**Suffolk Land Rover
Owners Club**

SLROC welcomes any
comments, contributions or
complaints from our members.
Send your contributions to:

Amy Berwick

10 Hall Lane, Wacton,
Norwich, NR15 2UH
Tel: 07496549234

Or email me at:
nooze@slroc.uk.com

COPY DEADLINE:

15th of the preceding
month at the very latest
please.

SLROC uses CB Channel 7

The opinions expressed in this
publication are not necessarily
those of the Editor, Committee,
Club or Company.

Neither can responsibility be
taken for the accuracy or
otherwise of articles or
advertisements placed.

All logo's, legends and artwork
remain the property of SLROC
and may not be reproduced
without permission from the
Committee.

©2002-2019 **Suffolk Land
Rover Owners Club Ltd**

We would like to thank
BETTAPRINT Woodbridge Ltd
For their help in producing
Nooze

SLROC Supports both national
and local 4x4 response groups

Cover Picture

Group Photo at Suffolk Show

So the show season is well underway and what a great start we have had! Not only is it brilliant to be raising money for good causes, but the social side of these events are great! This is my first year of camping at the shows, and although sleeping in a tent is not my favourite thing in the world, the company makes it all worth while!

While on the topic of shows; Sheila, Carole and Lorna have kindly offered to supply bacon butties for the Festival of Wheels show mornings. If you could drop me an email if you would like some that would be great, so I can give them an idea on numbers.

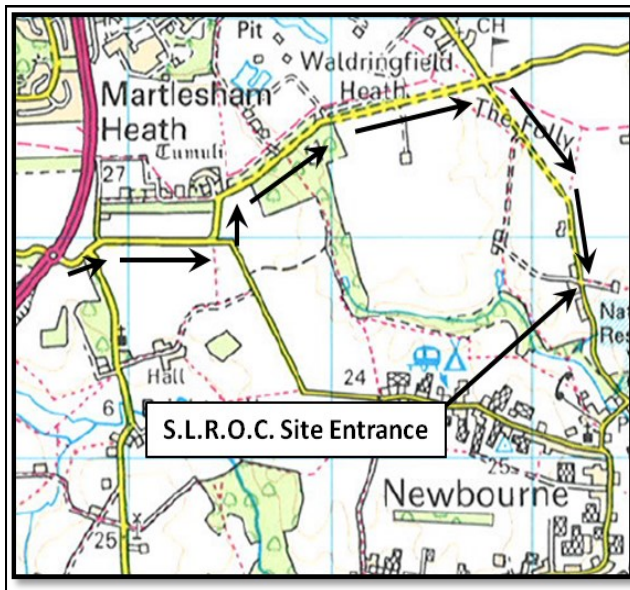
I have an apology to make to Tony Mattock who was one of the volunteers at the maintenance day back in March however was not included within the article in last month's Nooze! Sorry!

This month we have plenty of photos from the Suffolk Show and June Driving Day, so thank you all to have allowed me to use them! There is a write up about the Journey to Suffolk Show and another edition of Fred's Lightweight project.

Also, just a quick note about Open Day. It is fast approaching so if anyone has had any ideas or haven't yet put their name on the forum to volunteer, please let me know! We will also be looking for raffle and tombola prizes, so anything you can help with would be great!

Hope to see you all soon,
Amy

Directions to the Newbourne club site



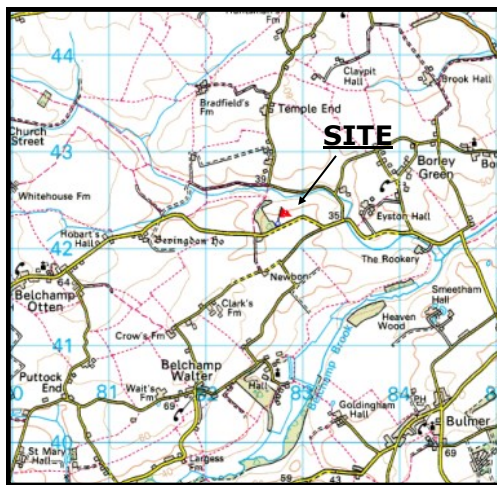
The club has its very own off-road driving site which we use monthly for weekend events, and competitions. The site is situated to the east of Ipswich, near to the village of Newbourne. Strict rules must be adhered to when using the site, to protect the safety of all users. Please keep your speed down around the village, and especially on the access track which has a 5mph limit. See you there!

Badwell Ash



OS sheet 155 grid ref TL 000 693

Snugg's Pit



OS sheet 155 grid ref TL 826 421

Chat From the Chair

The Suffolk Show, what a way to end May. A very big thank you to all of you that gave up your time, to attend and put the Suffolk Land Rover Owners Club yet again out where the public can see us.

Due to new insurance regulations, our paperwork has gone from twenty sheets to around two reams, and that's just one show. All the signing on forms have changed and our gallant members in the signing on marquee coped extremely well throughout the two days. We were all helped along with an early breakfast of bacon butties from Sheila and Russell. I think that this years show was quieter than in previous years, but still an enjoyable time was had by all.

The Training section has just re-qualified five Marshals, and qualified two new marshals. There is still space for more members to take up Marshal training and also become a qualified Winch operator. If you are interested, and wish to take up either of the courses, the last Training day this year will be on Saturday September 8th. For further information, email - safety@slroc.uk.com.

Three weeks later and we are now at the Heveningham Country Fair, a collection of trade stalls and a large collection of Top of the Range very expensive cars being shown off to the ever inquisitive public. This year, the organisers had opened an area just in front and to the side of us to allow the public a closer encounter with some of the top end cars, much to the publics delight. Our area, slightly larger than last year, but we were missing the See-Saw. We have still got our course through a slightly sparser woodland area and of course the large hole is still there to give the public an exciting stomach churning experience, depending on who is driving. Over all, compared to last year, the show appeared to be quieter, but we still raised over a thousand pounds. A big thank you to all who attended the weekend.

As you may have seen from Nooze, 13th/14th July a Tyro CCVT & Camp-Over/Social, and a Punch Hunt at Snuggs Pit, lets make it a weekend to remember. Also we have a Maintenance day and Camp-Over planned for the following weekend 20th/21st July. If you would like to lend a hand, please contact Toby Parker. offroadsec@slroc.uk.com
I look forward to seeing you at our club site.

All the best.
Pat.

EVENTS PLANNER 2019

This planner is intended as a guide and as such any event may be subject to change.

<u>When</u>	<u>Club Event</u>	<u>Where</u>	<u>Org</u>
July 13th	Tyro CCVT & camp over	Snuggs Pit	R. Gilmore
July 14th	Punch Hunt	Snuggs pit	R. Gilmore
July 20 th	Maintenance day & Camp Over	Newbourne	T. Parker
July 21 st	Driving Day	Newbourne	TBC
Sept 1st	CCVT & Interclub	Badwell Ash	M. Whitting
Sept 8 th	3rd Training Day (Novice Driver)	Newbourne	P. Corps
Sept 21st	Tyro CCVT & Camp Over	Newbourne	S. Bareham
Sept 22 nd	Driving Day	Newbourne	TBC
Oct 19th	"Ladies/Junior" Tyro CCVT & Camp Over	Newbourne	C. Finbow
Oct 20 th	Driving Day & Auto Jumble	Newbourne	C. Finbow
Nov 3rd	Single Vehicle Winch trial	Snuggs Pit	R. Lambourne
Nov 17 th	Children in Need Driving Day	Newbourne	A. Jeff
Nov 24th	CCVT	Snuggs Pit	A. cutting
Dec 29th	Mince Pie Driving Day	Newbourne	G. White

*****Events requiring Pre-Booking are in bold type*****

Driving Days - **£10*** - Driving Day Junior Afternoon **£5**

CCVT and Tyro Trials - still only **£15 Pre-Booked**

CCVT and Tyro Trial - Arrive & Drive (where permitted) **£20**

***Don't forget: It's only a fiver for each extra driver**

SHOW PLANNER 2019

This planner is intended as a guide and as such any event may be subject to change.

<u>When</u>	<u>Show</u>	<u>Where</u>	<u>CoC / Org</u>
Aug 3 rd —4 th	Festival of Wheels	Trinity Park	T. Alden
Aug 11 th	Club Open Day	Newbourne	A&S Berwick
Sept 14 th —15 th	LRO Show	Peterborough	TBC
Sept 21 st —22 nd	Henham Steam Rally	Henham Park	R. Heatehr



11th August, 10–3
Newbourne IP12 4PA



SLROC Open Day



Off Road Rides
Raffle
BBQ
And much more!



Please Support Our Advertisers As They Support Us!



**30 YEARS
EXPERIENCE**

LAND ROVER SPECIALISTS

- ✓ *Service*
- ✓ *Maintenance*
- ✓ *Parts*
- ✓ *Accessories*

50% cheaper than the main dealer plus great discounts for club members!

WWW.JSF4X4.CO.UK

01206 396644

**Unit 1, Causeway End Industrial Estate, Lawford,
Manningtree, CO11 2LH**

Please mention 'Nooze' when replying to adverts

LAND ROVER SPECIALIST



Servicing, Repairs and MOT work
Vehicle Preparation

Autologic Diagnostic

Visionaire Tracking Systems

10% Discount for club Members ✳

*** On Labour Only**

SWB, Mutford Garage, Nr Beccles. NR34 7UL



The Journey to the Suffolk Show



So after buying my buggy in January, I got it to run by putting a new clutch in it and made it to Newbourne for the driving day. I was really impressed with it so I decided to have a go at my first trial at Badwell Ash in March. This was a whole different type of off road driving for me.

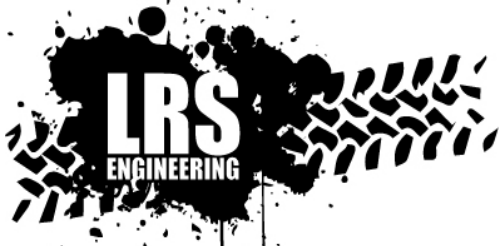
Then after this event, and knowing that I had volunteered for the Suffolk show, I decided that I was going to make the buggy mine with a new color scheme. After lots of preparation, cutting and welding we were ready for some paint. I

decided that it was going to become blue and red and after a lot of work I am really happy with the result.

Then the week of the Suffolk show came. This would be my baptism of fire being the first show I had done with the club. It was a great few days with some great people, for a great reason. Even the long days and rain in the evening didn't dampen spirits too much. All in all thanks to everyone there as I was made to feel very welcome as the newbie.

- Sam





**Unit 6 Westmead,
Hedingham Road
Gosfield, Nr Halstead
Essex CO9 1UP
01787 469553**

www.lrsengineering.co.uk



Bearnmach
LAND ROVER PARTS



B WILDBEAR

AllMakes4x4
Quality, Value and Performance

TerraFirMa
Serious 4x4 Accessories

*Servicing, Repairs, Diagnostics, Programming,
Genuine & Non Genuine Parts Supplied
Registered To Land Rover Online Service System*



Find us on:
facebook®

The Lightweight Project

Now, where was I, oh yes, whilst all this was going on I had been using the time to refurbish the body tub. Originally wheel arch extensions had been fitted to allow for oversize tyres to be fitted. I wanted to return to the standard size tyres so the extensions were removed, as was the hideous rollbar, and the resultant holes in the floor plated. The Lightweight has a two piece bottom hinged tail board. The top half was missing so Wendy went to work sourcing a second-hand unit from deepest Essex. This needed completely dismantling and straightening, paint stripping and repainting with new seals fitted after painting. The remainder of the tub just needed a lot of prep work before being painted inside and out with a heavy coat of underseal applied to the underside. Then it was lifted onto the chassis adjusted for height and bolted down. I was then able to look at fitting the seat-box but this had some badly corroded end panels which are not readily available for a lightweight so I took careful measurements from the existing bits and fabricated some from aluminium sheet and riveted them into position. Likewise, I had this problem with several under wing mud shields, so these too were made up from sheet material. Once the seat box was in, I could fit the new Exmoor Trim seat bases and backs. There were no seats at all when I got the truck.



I then fitted all the floor panels which then allowed the refitting of most of the dash panel gauges and switches, heater assembly, windscreen wiper mechanism and demister tubes and the period fire extinguisher picked up at a Newbury 4x4 jumble sale.

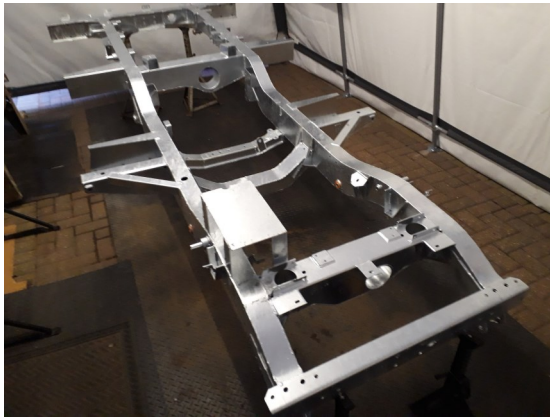
The door bottom frames were badly rusted so I obtained one new lower door panel and one used one and, as the door tops were both damaged I sourced a pair at the right price. After painting the doors and tops they were rebuilt using the existing door locks and glass with new runners and new door seals. The doors were then offered up for rehangng. This is where the fun started. The doors in some places had big gaps and overlapped the bodywork in others. The doors are very flimsy and the bulkhead has a small amount of adjustment so, together with door hinges that can be 'bent to suit' and with some strategically applied pressure I finally managed to at least get the doors to open and close.

The door bottom frames were badly rusted so I obtained one new lower door panel and one used one and, as the door tops were both damaged I sourced a pair at the right price. After painting the doors and tops they were rebuilt using the existing door locks and glass with new runners and new door seals. The doors were then offered up for rehangng. This is where the fun started. The doors in some places had big gaps and overlapped the bodywork in others. The doors are very flimsy and the bulkhead has a small amount of adjustment so, together with door hinges that can be 'bent to suit' and with some strategically applied pressure I finally managed to at least get the doors to open and close.

Class		From	To	Group ARN.	Sub Group ARN.	Vehicle ARN.
1	JUL 1974	JUL 1977				BU592A
2	JUL 1977	JUL 1979				
Command Code		Div/Dist Code	Unit Code	Dept. Wksp. Code		
J		F	5856530	608610		
M-12-73		M (V)	3845 9000	88864420		
32		Issue Voucher Reference Date	TXN	Location	Receipt Voucher Reference Date	TXN
				CYD ASHCHURCH	02/1973/04	13-9-78
				ADPOON	24 SEP 1977	
2495	29 11 78	3 RRW (V)	1491	10 12 78		
85	8/1/73	87 810 60A Cabo. FF	2/163	29/1/73		

Rep: Mark 2 F M 1 5
 Make: 27 F M 1 5
 Chassis No: 01510185A A
 Work Contract No:
 Chassis Next No: W/11140
 Designation: D15 JUL 1974
 D15 JUL 1974

Doc Form 419B



With the vent panel fitted I could then set about fitting the windscreen frame above it. This had already been refurbished, painted and fitted with new laminated glass. Then the hood door frame brackets and hood-sticks were installed. This was followed by the brand new hood bought at the LRO Show back in September from Undercover Covers for a discounted price.

All this time the truck had been sitting on axle stands waiting for new tyres

to be fitted to repainted wheels. The correct size for this model is 6.50x16s but it had 7.50x16s which, to my mind, looked too big, so I went for a more modern 205x16 mud pattern (from Beartown Tyres) which have a very similar rolling radius to the 6.50s and look just right. The wheels were finally fitted and for the first time in nearly eighteen months it was actually back on the ground.

During this time I had been attending to a myriad of little jobs, like getting the engine running nicely, fitting a new front bumper and both front and rear bumperettes, the unique to lightweight, front and rear lifting eyes and number plates etc. I had originally planned not to fit any rear seats but I was offered a cheap side facing bench seat which I fitted, together with a pair of new seat belts.

Fairly recently a suitable sunny Saturday afternoon saw the maiden voyage of the Lightweight. With so many unknown factors to bear in mind (remember I had not previously driven the truck on the road) it was with some trepidation that Wendy and I took it for a short run around some local back lanes, not wanting to have problems in the middle of the A14. I have to say that it performed admirably in all respects and whilst the driving position is even more cramped than my 90 and noise levels are quite high due to the lack of any insulation it was a joy to drive. We also called in to Newbourne with it for the AGM and for inspection by some leading SLROC members!

Another reason for enjoying using the truck is that, due to its age, it requires neither MoT certificate nor road tax. It has since been on a run down to the deep east of Essex and, apart from the need for a replacement battery, I can report no problems.



- Fred



Mansfield 4x4

BURY ST. EDMUNDS LTD

01284 767174

www.mansfield4x4burystedmunds.com

**Parts, Accessories, Service, Repair and Diagnostic Testing
for all models of Land Rover and Range Rover**



MOT Testing for all cars

3D wheel alignment available



**Winch mounts • Side bars • Underbody protection • Exhausts
Engine and Clutch upgrades • Wheels and Tyres**

And much more....

Email: info@mansfield4x4.net



Unit A1 Chase Road, Northern Way Ind. Est., Bury St Edmunds, Suffolk, IP32 6NT



AllMakes4x4
Quality, Value and Performance

TerraFirma
Serious 4x4 Accessories

ODYSSEY
THE EXTREME BATTERY

DRAPER

G
GOODWINCH.COM

S
SUPERWINCH

WARN

BRITPART

Bearmach

GORCE

LightFORCE
PERFORMANCE LEATHER



Mansfield 4x4
BURY ST. EDMUNDS LTD

01284 767174

www.mansfield4x4burystedmunds.com

***Free air conditioning
efficiency report***

***Free 4 wheel alignment check
with a printed report.***

***Air conditioning regas for
R134 systems £45 + vat***

MOT test class 4 £39.95

MOT test class 7 £47.95

***Parts, Accessories, Service, Repair and Diagnostic Testing
for all models of Land Rover and Range Rover***



Email: info@mansfield4x4.net



Unit A1 Chase Road, Northern Way Ind. Est., Bury St Edmunds, Suffolk, IP32 6NT

June Driving Day



HWB AUTOMOTIVE

INDEPENDENT LAND ROVERS • CLASSIC & SPORTS PRESTIGE SPECIALISTS

LAND ROVER SPECIALISTS

LAND ROVER MASTER TECHNICIAN
OVER 10 YEARS EXPERIENCE

ALL MAKES OF SPORTS, CLASSIC &
PRESTIGE CARS SERVICED & REPAIRED

FULL LAND ROVER DIAGNOSTICS

PERFORMANCE UPGRADES & BESPOKE
MODIFICATIONS UNDERTAKEN

RESTORATION & RECOMMISSION WORK

MOT PREPARATION & MOT'S

AIR CONDITIONING SERVICING

ATF TRANSMISSION
MEGA FLUSH SERVICES

Find us at

UNIT 7B | BLYTH RD IND. ESTATE
HALESWORTH | IP19 8EN

T 01986 873 999

W HWBAUTOMOTIVE.COM

E INFO@HWBAUTOMOTIVE.COM



UNLEASH THE POTENTIAL

ALIVE™

ALIVE TUNING
AUTHORISED AGENTS
ECU REMAPPING AND PERFORMANCE SPECIALISTS

Suffolk Show 2019



Meeting held Friday 8th March, 7.30pm

Minutes prepared by Graham White

Present Graham White (GW), Pat Corps (PC)(Chair), Andy Jeff (AJ)
Apologies Tim Alden (TA), Richard Gilmore (RG), Amy Berwick (AB)

Members with special duties not required to attend Committee.

Amy Berwick (AB)(Nooze), Toby Parker (TP)(Off Road), Niki Broadley (NB)(Membership)

Notes & reports following April cancelled meeting.

Approved as a true account.

Matters arising from previous meeting.

Outstanding actions. (NB Action reference = Date + numeric i.e. MMDDNN)

110311 – Membership Sec to have access to bank acc to check memberships –

Action MW

180907 – Organise fire extinguisher service – **Action PC**

100503 – Confirm current value expectations of the 5kW generator – **Action**

MW

010401 – Change Bank if Membership Sec still has no access to account after January – **Action MW**

010404 – PC to loan the Club a generator for its use – **Action PC**

010407 – Obtain chosen charities logos for trailer – **Action RG**

010411 – Organise NB access to bank account (action 110311 & 010401) –

Action MW

010412 – Discuss with Paul Whitting potential Committee position – **Action AJ**

010413 – Contact G.Nurse re 5kW generator – **Action PC**

020803 – Alter driving sign on sheets to include a driving licence declaration. –

Action PC

Completed Actions

010403, 010409, 010416, 020804, 020805, 030801

Actions arising this meeting

050301 – Replace 'Nooze laptop' battery – **Action AB**

050302 – Confirm acceptance of using alternative ISP for issuing Nooze with those members where problems exist using Club's normal ISP – **Action AB**

050303 – Obtain posters/leaflets advertising Club Open day. – **Action AB**

050304 – Set up an account with 'Lumberjacks' where the Club buys materials – **Action MW**

050305 – Look into the suitability of mobile card readers for Club use – **Action AJ**

050406 – Add request for rubbish disposal volunteers to the 'Help Wanted Board' – **Action TP/GW**

Calendar items None this month

Membership No report

Finance report £3550 in Bank, all payments made and up to date.
Mandates sorted, await paying in book

Club Site

The Maintenance day went ahead as planned during March.
For disposing of unwanted items from the site PC proposed that volunteers with suitable trailers take these to the council tip, located just the other side of A12 when leaving Newbourne rather than having the expense of a skip.

Nooze

AB reported that difficulties with sending Nooze to btinternet accounts had been resolved using another ISP and requested that an alternative Club account be set up for this purpose.

Safety & Training

PC reported the April 27 Winch training included 4 requalification plus 3 new members.

Shows The date for the show at Henham has been changed to the same date as the Warren. Therefore, the Club will not be attending the Warren show.

Show Tee shirts have been ordered.

Web AJ reported that Club has 1322 'Likes' with 1384 'Followers' on Facebook.

AOB GW suggested that the use of mobile card readers would facilitate payments being made to the Club whilst reducing the Club's exposure to cash and that he had forwarded some information to MW on the subject.
The Club needs a qualified person to repair the caravan water heaters.

Meeting closed 20.00
at the Club

Next Meeting 7.30pm Friday 7th June*

Minutes approved

.....
P.Corps 5/6/19

* changed



HILLCREST

VEHICLE SOLUTIONS

LAND ROVER SPECIALISTS

- **Specialist Repairs** requiring body removal
- **Chassis repairs** and replacement
- **Engine conversions** and replacement
- **Rebuilds**

- **MOT**
Discount if booked with a service
- **Servicing**
We carry out servicing to manufacturers specifications
- **Repairs**
All general repairs
- **Diagnostics**
Using the latest diagnostic technology
- **All makes and models welcome**
Modern and classic

**All mechanical work guaranteed for
12 months or 12,000 miles**

Hillcrest Vehicle Solutions Ltd, Hillcrest Garage, Cratfield Road,
Huntingfield, Halesworth, Suffolk, IP19 0QB

Tel: 01986 798668 Email: info@hillcrestvs.co.uk

Please call Jono Rout or Sandra French
for a no obligation quote or friendly advice

SLROC CLUB SHOP

Clothing, Stickers, etc

**All clothing is available to order in a range of sizes and colours,
just ask!**

T-Shirt	£14.00
Polo Shirt	£16.00
Sweatshirt	£18.00
Hoodie	£20.00
Contrast Hoodie	£22.00
Grizzly Fleece	£30.00
Chunky Zoodie	£30.00
Onesie	£30.00
Contrast Onesie	£30.00
Children's T-Shirt	£10.00
Children's Polo Shirt	£13.00
Children's Fleece	£20.00
Children's Hoodie	£16.00
Children's Hi-Viz Vest	£4.00
Cuffed Beanie	£10.00
5-Panel Cap	£10.00
Door / Panel Sticker	£4.00
Small Sticker	£1.00
Window Sticker	£1.00
www.slroc.uk.com Sticker (Black, Orange, Silver, Yellow, Red, Blue & White)	£3.00
Key Ring	£1.00

**Prices are correct at time of going to print but may be subject to
change.**

SLROC CLUB SHOP

Recovery Gear

2M Bridle	Price on Application
5M Rope	Price on Application
7M Rope	Price on Application
9M Rope	Price on Application
2M 5 tonne Strop	£17.00
4.75 tonne Shackle	£7.00
Jate Clamp	£18.00
Battery Clamp	£6.00

Prices correct at time of going to print but may be subject to change.
The Club Shop is at most events, and items are also available from:

Spencer White: - Email: clubshop@slroc.uk.com

Please get in touch if you wish to collect items from a Show.
Items will soon be featured on our web site at www.slroc.uk.com



Est. UK1958

Bearmach

PARTS AND ACCESSORIES FROM OVER 200 BRANDS
OE BRANDED / GENUINE / BEARMACH

Photo: © L'Asie en soi-e



UK Next
Day Delivery



3 Year Warranty
on Bearmach-branded
products
*Exclusions apply



Technical Support
Ask us for help with
parts ID

CLUB DISCOUNT: 10% OFF

T&Cs: Valid on bearmach.com

Use code **SLROCTEN**

Excludes shipping, taxes, sale & clearance items

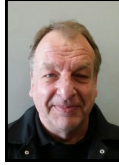
BUY ONLINE | BUY FROM A DISTRIBUTOR | OPEN A TRADE ACCOUNT



CLUB CONTACTS

CLUB PRESIDENT

Ralph Lambourne



CHAIRMAN

Pat Corps
07887 500799
chair@slroc.uk.com



CLUB SECRETARY

Graham White
secretary@slroc.uk.com



TREASURER
Michael Whitting
treasurer@slroc.uk.com



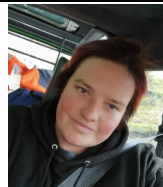
VICE CHAIR **COMPETITION SECRETARY**

Richard Gilmore
vicechair@slroc.uk.com
compesec@slroc.uk.com



MEMBERSHIP SECRETARY

Niki Broadley
membership@slroc.uk.com



OFF ROAD SECRETARY

Toby Parker
offroadsec@slroc.uk.com



CLUB CONTACTS

SAFETY & TRAINING OFFICER

Pat Corps
07887 500799
safety@slroc.uk.com



PR & SHOW CO-ORDINATOR

Tim Alden
pr@slroc.uk.com



CLUB SHOP

Spencer White
clubshop@slroc.uk.com



NOOZE EDITOR

Amy Berwick
07496 549234
nooze@slroc.uk.com



WEB SECRETARY

websec@slroc.uk.com
Andy Jeff



Please note: Some of the Committee Members have requested that details of their addresses are not published within the newsletter for personal reasons. Please do not let this put you off contacting any of the Committee, they will be only too glad to receive phone calls (as long as they are at a reasonable time of day, say **no later than 9:30pm**).

If you have any mail you wish to pass on to a Committee Member then it can be sent via any of the published addresses above. The Committee also respects the privacy of each and every Club member, and to that end, we do not give out details of Club members to any other organisation.

Important Information

On entering the access lane to the site, please adhere to the **5mph** speed limit. Failure to do so, may result in removal from the site with no refund of fees.

If only watching or socialising, please turn right to park in the rear car park. Do not park in the main car park or proceed to signing-on/scrutineering.

Trailers to be parked in designated area in main parking area.

If taking part in the event please stop at the signing-on hut first:

For insurance purposes, membership cards **must** be available for inspection at **any** club driving event, if requested. Only members holding a full UK driving licence* and who have **signed on**, may drive at any club event. *With the exception of 'Tyro Trials' where Supplementary Regulations may allow drivers of 13 years and upwards.

Then continue to scrutineering: **All** vehicles must be scrutineered prior to driving onto the courses. Minimum requirements for recovery points are two -points at the front with bridle, and manufacturer's tow hitch at the rear or two 'Jates' and bridle. Please fit bridle before scrutineering.

Seat belts (inc. lap-belts) must be fitted and worn by all occupants.

(No belt, no ride. This is for your own safety).

Once signed-on and scrutineered, you may continue to the parking area.

All loose items must be removed from the vehicle before going on the courses. Vehicles will be checked for these items and stickers.

15 mph site speed limit

No driving along the footpath at the bottom of the site, except at the designated crossing point for access to and from the Woodland Course.

All recoveries under the supervision, and at the discretion of a Marshal. All facets of winching operations may only be carried out by persons aged 18 and over, including rigging.

Pedestrians must not walk on the courses, only the access roads- this is for your own safety.

Children (under 16's) remain the sole responsibility of parents/carers at all times. Children must wear a Hi-Viz vest whilst outside a vehicle in all areas. Children must be accompanied by an adult in all active vehicle movement areas.

Dogs must be kept on leads and under proper control at all times.

It is the responsibility of the owner to clear up after your dog(s).

Do not drive roped-off areas.

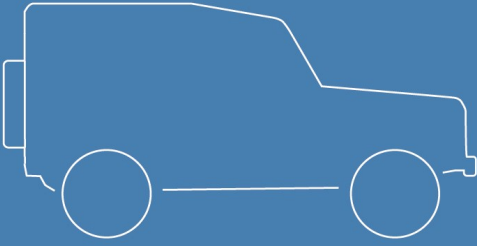
Do not remove ropes or posts unless instructed by a Marshal.

Strictly no drinking and driving. No motorcycles or quad bikes.

No tractor, Implement or overly-aggressive treaded tyres.

Please take all your litter home with you.

The Marshal's decision is final



Insurance tailored around you & your Land Rover

See how we measure up, call us on **0800 916 1288** and you could get a cheaper quote compared to online

At Adrian Flux we have over 40 years experience tailoring insurance to suit your specific needs. We don't believe in "one size fits all" when it comes to insurance, which is why you could save time and money by calling a member of our team directly.

Ask our experienced staff about:

- Club member discounts**
- Agreed valuations**
- Limited mileage discounts**
- European breakdown cover**
- Driving other vehicles**

Car Club Quoteline: 0800 916 1288

Authorised & regulated by the Financial Conduct Authority