



August 2019

NOOZE

The Suffolk Land Rover Owners Club Magazine



WWW.SLROC.UK.COM

FOR ALL YOUR LAND ROVER SERVICING NEEDS



- Fully Trained Land Rover Technicians
- The latest technology IDS & SDD diagnostics and repairs
- Competitive pricing with no hidden extras

LINDACRE LAND ROVER SERVICE CENTRE

2 Farthing Road, Sproughton Industrial Estate, Ipswich, IP1 5AP
Tel 44 (0)1473 461 751. Fax 44 (0)1473 744 048.

LINDACRE IPSWICH



GO BEYOND

Nooze News!

NOOZE

is the "mouthpiece" of the
**Suffolk Land Rover
Owners Club**

SLROC welcomes any
comments, contributions or
complaints from our members.

Send your contributions to:

Amy Berwick

10 Hall Lane, Wacton,
Norwich, NR15 2UH
Tel: 07496549234

Or email me at:

nooze@slroc.uk.com

COPY DEADLINE:

15th of the preceding
month at the very latest
please.

SLROC uses CB Channel 7

The opinions expressed in this
publication are not necessarily
those of the Editor, Committee,
Club or Company.

Neither can responsibility be
taken for the accuracy or
otherwise of articles or
advertisements placed.

All logo's, legends and artwork
remain the property of SLROC
and may not be reproduced
without permission from the
Committee.

**©2002-2019 Suffolk Land
Rover Owners Club Ltd**

We would like to thank
BETTAPRINT Woodbridge Ltd
For their help in producing
Nooze

SLROC Supports both national
and local 4x4 response groups

Cover Picture

Proving we are as interesting as
sports cars at Heveningham
Hall

It seems unreal that I am here and editing August's Nooze already! Where is 2019 going? Thinking of how quickly time seems to be going, the open day will soon be upon us and I could really do with your help!

This is the last Nooze that I can send a plea out for your help before the open day commences! There are lots of different jobs to get stuck into, whether this is driving, manning a stall or marshalling. The help you give this event, helps the club run throughout the year as any funds raised go straight into the clubs pot! So please, if you're free on the 11th August, send me a quick email to give me a heads up on numbers and it will be great to see you there!

On the topic of the open day, for those of you on Facebook I have created a public event to help promote the day. If you could invite your friends and share this, that would be great!

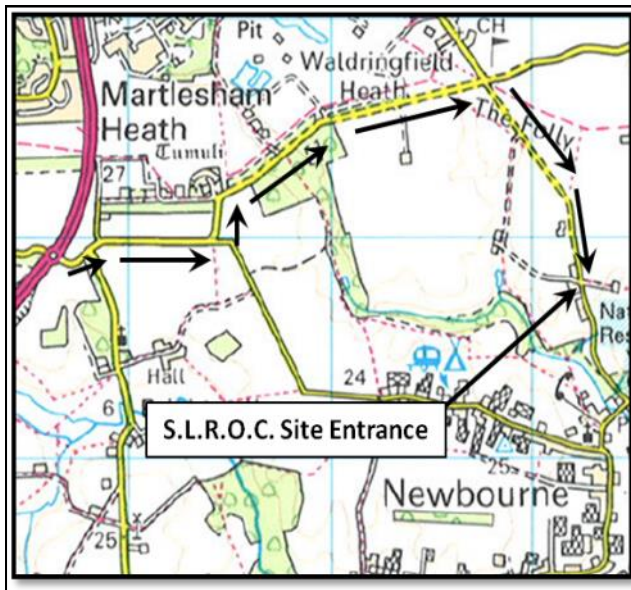
In this months Nooze, we have the final installment from Fred regarding his Lightweight project! I am sure you will agree this has been a great read, so for any of you completing any projects, please put a few words together for Nooze! There's also information regarding the process of nominating and choosing charities for 2020, and a montage of photos from Heveningham Hall Country Fair.

Also a quick note just to say there was a slight typo in last month's Nooze. For the eagle eyed amongst you, you may have noticed that the minutes were headed as March. I can assure you these were May's minutes, and the wonders of copy and paste failed me as I forgot to change the month! Doh!

Hope to see you all soon,

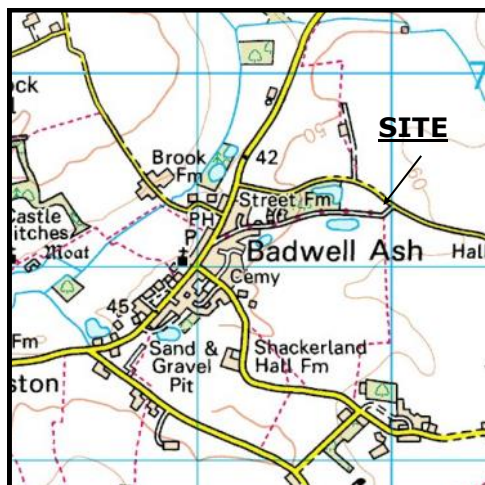
Amy

Directions to the Newbourne club site



The club has its very own off-road driving site which we use monthly for weekend events, and competitions. The site is situated to the east of Ipswich, near to the village of Newbourne. Strict rules must be adhered to when using the site, to protect the safety of all users. Please keep your speed down around the village, and especially on the access track which has a 5mph limit. See you there!

Badwell Ash



OS sheet 155 grid ref TL 000 693

Snugg's Pit



OS sheet 155 grid ref TL 826 421

Chat From the Chair

Once again, we will be attending the Festival of Wheels and offering Land Rover rides as we do at the Suffolk Show, it is taking place at Trinity Park on the 3rd – 4th August 2019, 10am – 5pm. (Ipswich IP3 8UH). The event is a mix of cars, bikes, trucks and all things motoring and is the largest event of its kind in the South-East, the Festival gathers together the east coasts rarest and most glamorous cars, bikes and trucks. It served us well last year and all who attended, saying what a great weekend they all had so hopefully we will raise more money again for our local charities at this event.

Our Club Open Day on Sunday 11th August – 10am until 3pm and is being run by Sarah and Amy Berwick, so please come along and support them. The Open Day brings much needed cash into the club to allow us to fund its' day to day running. Which brings me on to giving a big thank-you to Toby and our willing team of helpers who have just replaced the broken roofing sheets above the caravan veranda. They also cleaned up the site, cut back the undergrowth and re-roped the driving tracks so when the public arrive on Open Day for their rides, there will be fewer scratches - and as drivers, we will now all be able to see where we are going!

Regarding the Land Rover Show at Peterborough on the 14th & 15th September, Will Dowe is compiling a list of interested persons who wish to attend. If this event is oversubscribed, then names will be drawn out of the hat and all those who are picked will be contacted. At present I'm not sure which day I will be attending but it's a great event to attend but those who do attend enjoy a camp over although we don't drive as we do at other events.

In last months' Nooze, I got the date wrong for the Training Day, so it's not Saturday the 8th September but Sunday 8th. We are still aiming to run both Marshal and Winch training on that Sunday.

We have had to cancel another Trial/Social event which a great pity as a lot of planning and manpower goes into organising these events. We seem to get about 7 people sign up but really need a minimum of 10 people to attend to cover the hiring of both Badwell Ash and Snuggs Pit. So, for those who have not yet attended a trial, we have a selection from using your winch, cross country and so on. From past feedback those who have taken part in any of our Trials have learnt something new and had a really enjoyable time. If you want to see what more of what we get up to then visit our Facebook page <https://www.facebook.com/suffolkandroverownersclub/> or the website <http://www.slroc.uk.com> which has the diary on, back copies of 'The Nooze' and much more.

All the Best,

Pat

EVENTS PLANNER 2019

This planner is intended as a guide and as such any event may be subject to change.

<u>When</u>	<u>Club Event</u>	<u>Where</u>	<u>Org</u>
Sept 1st	CCVT & Interclub	Badwell Ash	M. Whitting
Sept 8 th	3rd Training Day (Novice Driver)	Newbourne	P. Corps
Sept 27th	Tyro CCVT & Camp Over	Newbourne	S. Bareham
Sept 28 th	Driving Day	Newbourne	TBC
Oct 19th	"Ladies/Junior" Tyro CCVT & Camp Over	Newbourne	C. Finbow
Oct 20 th	Driving Day & Auto Jumble	Newbourne	C. Finbow
Nov 3rd	Single Vehicle Winch trial	Snuggs Pit	R. Lambourne
Nov 17 th	Children in Need Driving Day	Newbourne	A. Jeff
Nov 24th	CCVT	Snuggs Pit	A. cutting
Dec 29th	Mince Pie Driving Day	Newbourne	G. White

*****Events requiring Pre-Booking are in bold type*****

Driving Days - **£10*** - Driving Day Junior Afternoon **£5**

CCVT and Tyro Trials - still only **£15 Pre-Booked**

CCVT and Tyro Trial - Arrive & Drive (where permitted) **£20**

***Don't forget: It's only a fiver for each extra driver**



SHOW PLANNER 2019

This planner is intended as a guide and as such any event may be subject to change.

<u>When</u>	<u>Show</u>	<u>Where</u>	<u>CoC / Org</u>
Aug 3 rd —4 th	Festival of Wheels	Trinity Park	T. Alden
Aug 11 th	Club Open Day	Newbourne	A&S Berwick
Sept 14 th —15 th	LRO Show	Peterborough	W. Dowe
Sept 21 st —22 nd	Henham Steam Rally	Henham Park	R. Heatehr



11th August, 10–3
Newbourne IP12 4PA



SLROC

Open Day



Off Road Rides
Raffle
BBQ
And much more!



Please Support Our Advertisers As They Support Us!



**30 YEARS
EXPERIENCE**

LAND ROVER SPECIALISTS

- ✓ *Service*
- ✓ *Maintenance*
- ✓ *Parts*
- ✓ *Accessories*

**50% cheaper than the main dealer plus great
discounts for club members!**

WWW.JSF4X4.CO.UK

01206 396644

**Unit 1, Causeway End Industrial Estate, Lawford,
Manningtree, CO11 2LH**

Please mention 'Nooze' when replying to adverts

LAND ROVER SPECIALIST



Servicing, Repairs and MOT work
Vehicle Preparation

Autologic Diagnostic

Visionaire Tracking Systems

10% Discount for club Members ✳

*** On Labour Only**

SWB, Mutford Garage, Nr Beccles. NR34 7UL



Selection of Charities 2020

Raising money for charities is a major activity for the Club. The money raised obviously helps our chosen charities, but by attending the shows our members find the involvement with the people, rewarding, good fun, often hard work and by doing so we raise awareness and the profile of the Club. It's very gratifying to know the person you are giving a ride to has come back because they had been before and enjoyed themselves. The fact we are raising money for good causes whilst making people happy is a win win situation.

Some of our charities are set, in that where we attend shows an agreed amount is paid into the show organisations charity, but the main charities the Club selects each year.

The selection of our main charities for the year is not a formal or rigid procedure but it does follow a process that Committee would like to share with you.

Firstly there is the 'call', a notice is placed in the Clubs Nooze magazine asking for nominations for possible charities that we might consider for the coming year. These nominations from Club members, along with any 'near misses' from the previous year are reviewed. Firstly to ensure the nominations are in fact charities and that they serve the local area. Only charities clearly benefiting causes in Suffolk, but may include neighbouring counties will pass to the next stage.

Many national charities have branches serving local areas such as the Parkinson's Society a chosen charity for 2018, where money raised in Suffolk stays in Suffolk. Using the Charity Commissions accounts we next look at how the Charity spends their money. We are looking to support charities where a large percentage of the money is used for the charities' cause, not supporting a large charity administration, wages, etc. After this a Committee member is likely to make contact with the charity in order to gauge that the accounts are a true reflection of the what is happening and to find out how they might use a donation from us. We also need to find out how they would use the opportunity of joining us at the shows we attend. We have recently found that some charities are better at this than others and has consequently reflected in the award given.

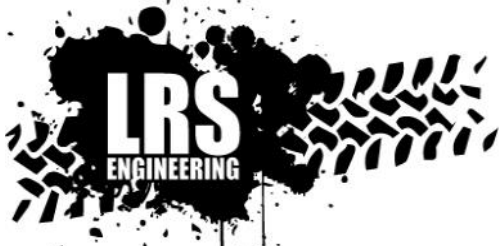
The information is then reported to the full Committee, along with all nominations and a decision is reached, the chosen charities will then be notified so they can plan their part in attending the shows with us. It also gives them a platform to promote themselves.

We, the Committee have recognised this process is time consuming so it needs to happen earlier in the year in order that the process is completed in sufficient time for charities to plan for the shows, so the call for next years charities will come early late summer this year.

It's worth mentioning that this year we have reverted back to having just two principle charities rather than the four that we have had in previous years. It was found it takes an awful lot of coordinating and effort to manage four charities plus the number of passes required, particularly at the most popular shows becomes an issue.

This is your Club and your charity nominations are essential each year.

If you haven't yet helped at a show and would like to give it a try, please chat to one of the Clubs Show team, Tim, Niki and Emma, or just sign up to an event on the Forum.



**Unit 6 Westmead,
Hedingham Road
Gosfield, Nr Halstead
Essex CO9 1UP
01787 469553**

www.lrsengineering.co.uk



Bearthach
LAND ROVER PARTS



B WILDBEAR

AllMakes4x4
Quality, Value and Performance

TerraFirMa
Serious 4x4 Accessories

*Servicing, Repairs, Diagnostics, Programming,
Genuine & Non Genuine Parts Supplied
Registered To Land Rover Online Service System*



The Lightweight Project

When I first got the vehicle home I wanted to establish the build date. This is because the V5 (log book) only stated the date of first civilian registration and I needed confirmation of this original date to prove to the DVLA that the Lightweight qualified for tax and MoT exemption. This was done by contacting The British Motor Heritage Trust at Gaydon who hold all of Land Rover's vehicle build records and quoting the chassis number, military registration number and vehicle description. From this, for a fee, they produced an embossed certified copy of the factory record for my lightweight. This confirmed the 1973 build date, and is acceptable proof by the DVLA, which tied in with the civilian age-related registration number on the truck. It also listed the destination and dealer to whom it was first dispatched. I now have a V5 Registration Document which states the correct build date.

To find out where the Lightweight had been in service I contacted the Royal Logistics Corps Museum in Deepcut, Surrey who were most helpful in finding (again for a small fee) the 'B' Vehicle Data Card and sending me a copy. These cards detail the unit/s to which vehicles were issued and then list further transfers if any, to other units. In my case 22 FM 15 was received by the Royal Regiment of Wales (Volunteers) in December 1973 and remained in their custody until it was cast in November 1983 and sent to British Car Auctions for sale.

During the restoration of this vehicle I have received a great deal of advice, support and information from many sources and I would like to thank them for their time and patience.

Members of the Military Lightweight Club, and The Ex-Military Land Rover Association through their forums, Landypart, Colchester Auto Refinish Ltd for supply of paint and how best to use it, DJ Evans for Engineering Supplies and cups of tea, Beartown Tyres Ltd, Undercover Covers, Richards Chassis, Nacton Auto Electrics and many individual friends and neighbours. Thank you all.

My next project is a 1968 Narrow Track Sankey Trailer - the ultimate Lightweight accessory.



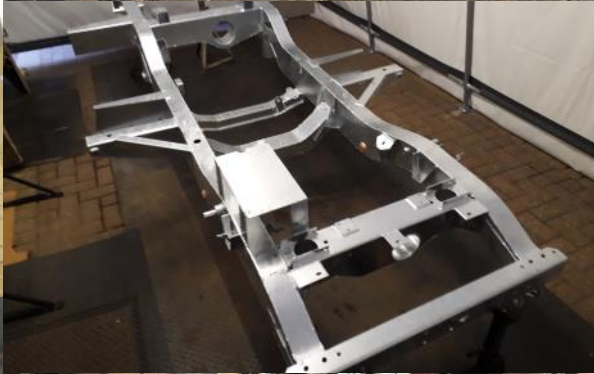
- Fred James

Class	From	To	Group Acn.	Sub Group ARN.	Vehicle ARN.
1	JUL 1975	JUL 1977			RU592A
2	JUL 1977	JUL 1979			
Command Code		Div/Dist Code	Unit Code	Dist. Wkst. Code	
D		F	5878650	V058110	
B-12-73		M (X)	3745 9000	8886420	
32		Issue Voucher Reference Date	TXN	Location	Receipt Voucher Reference Date
32					
2496		29.11.78	3	RRW (V)	191
85		1/1/79	181	Slo 66A Cabo, FF	2/1/79
CVD ASHCURCH		ADPCON - 24 SEP 1977		Aur 1247/04 13.9.78	

Reg. Mark 22 FFM 1.3
 Make
 Chassis No. C5101854 A
 Running Contract No.
 Running Contract Nbr V11140
 Designation
 Body Contract No.
 D/E III 1975

for M87 10/11/01 On 10/11/03 Form #1 208 599/01

'B' VEHICLE HISTORY CARD Dos Form 419B





Mansfield 4x4

BURY ST. EDMUNDS LTD

01284 767174 www.mansfield4x4burystedmunds.com

**Parts, Accessories, Service, Repair and Diagnostic Testing
for all models of Land Rover and Range Rover**



MOT Testing for all cars

3D wheel alignment available



**Winch mounts • Side bars • Underbody protection • Exhausts
Engine and Clutch upgrades • Wheels and Tyres**

And much more....

Email: info@mansfield4x4.net

Unit A1 Chase Road, Northern Way Ind. Est., Bury St Edmunds, Suffolk, IP32 6NT



AllMakes4x4
Quality, Value and Performance

TerraFirma
Service 4x4 Accessories

ODYSSEY
THE EXTREME BATTERY

DRAPER

GS

GS

WARN

BRITPART

Bearmach

EDGE

LightFORCE
PERFORMANCE LIGHTS

GOODWINCH.COM

SUPERWINCH



Mansfield 4x4
BURY ST. EDMUNDS LTD

01284 767174

www.mansfield4x4burystedmunds.com

***Free air conditioning
efficiency report***

***Free 4 wheel alignment check
with a printed report.***

***Air conditioning regas for
R134 systems £45 + vat***

MOT test class 4 £39.95

MOT test class 7 £47.95

***Parts, Accessories, Service, Repair and Diagnostic Testing
for all models of Land Rover and Range Rover***

Email: info@mansfield4x4.net



Unit A1 Chase Road, Northern Way Ind. Est., Bury St Edmunds, Suffolk, IP32 6NT



Heveningham Hall Country Fair



HWB AUTOMOTIVE

INDEPENDENT LAND ROVERS • CLASSIC & SPORTS PRESTIGE SPECIALISTS

LAND ROVER SPECIALISTS

LAND ROVER MASTER TECHNICIAN
OVER 10 YEARS EXPERIENCE

ALL MAKES OF SPORTS, CLASSIC &
PRESTIGE CARS SERVICED & REPAIRED

FULL LAND ROVER DIAGNOSTICS

PERFORMANCE UPGRADES & BESPOKE
MODIFICATIONS UNDERTAKEN

RESTORATION & RECOMMISSION WORK

MOT PREPARATION & MOT'S

AIR CONDITIONING SERVICING

ATF TRANSMISSION
MEGA FLUSH SERVICES

Find us at

UNIT 7B | BLYTH RD IND. ESTATE
HALESWORTH | IP19 8EN

T 01986 873 999

W HWBAUTOMOTIVE.COM

E INFO@HWBAUTOMOTIVE.COM



UNLEASH THE POTENTIAL

ALIVE™

ALIVE TUNING
AUTHORISED AGENTS
ECU REMAPPING AND PERFORMANCE SPECIALISTS

Meeting held Wednesday 5th June, 7.30pm

Minutes prepared by Graham White

Present Graham White (GW), Pat Corps (PC)(Chair), Tim Alden (TA), Richard Gilmore (RG), Niki Broadley (NB), Toby Parker (TP)

Apologies

Amy Berwick (AB), Andy Jeff (AJ)

Minutes of previous meeting.

Approved as a true account.

Matters arising from previous meeting.

Outstanding actions. (NB Action reference = Date + numeric i.e. MMDDNN)

110311 – Membership Sec to have access to bank acc to check memberships –

Action MW

180907 – Organise fire extinguisher service – **Action AJ** Arranged for 7/6/19

100503 – Confirm current value expectations of the 5kW generator – **Action MW**

010401 – Change Bank if Membership Sec still has no access to account after January – **Action MW**

010404/07 – Action's complete

010407 – Obtain chosen charities logos for trailer – **Action RG**

010411 – Duplicate action

010412 – Discuss with Paul Whitting potential Committee position – **Action AJ**

010413 – Action complete

020803 – Action superceded

050301 – Replace 'Nooze laptop' battery – **Action AB**

050302/03 – Actions complete

050304 – Set up an account with 'Lumberjacks' where the Club buys materials –

Action MW

050305 – Look into the suitability of mobile card readers for Club use – **Action AJ**

050406 – Action Complete

Actions arising this meeting

060501 – Fit plug and set up new generator – **Action PC**

060502 – Remove redundant sign on sheets and replace with new in sign on hut –

Action PC

060503 – Establish a suitable storage area for sign on sheets that must be kept –

Action PC

060504 – Ensure a call for volunteers for maintenance day goes out to members –

Action TP

060505 – Advertise 5kW Generator as spares or repair on eBay or elsewhere. –

Action AJ

060506 – Liaise with Amy to understand and help resolve issues with the laptop she uses to produce Nooze. – **Action TA**

- 060507 – Discuss Treasurer position with MW – **Action PC**
060508 – Investigate an alternative to 1&1 IONOS as an ISP – **Action AJ**
060509 – Post a request for volunteers for the Festival of Wheels on Forum etc.
– **Action TA**
060510 – Post a request for entrants for 13/14 July events at Snuggs Pit –
Action RG
060511 – Identify suitable members and organise a 'Land Rover experience' for
the Girls Guides using the show ground on 27th July – **Action TA**
060512 – Contact T.Hawkins, Saxmundham Rotary, to discuss the Club's
potential support of their marathon event next May. – **Action TA**

Calendar items

Water meter to be read and appropriate payment made to Brian

Membership

New members - Lorna Game, Finn Benn, (Suffolk) & Philip Gibbons
(Spennymoor). Proposed NB, Sec GW

Finance report No report available

Club Site

PC Has collected the 5kW generator which is now back at the Club but not serviceable, it is proposed to try to sell it as spares or repair, as we have been advised it is beyond economical repair.

PC has donated a generator that is suitable for providing power to the two caravans that form the 'Club House'.

TP advised that amongst other tasks it is proposed to replace the veranda covering during the proposed Maintenance Day scheduled for 20th July. Covering should ideally be clear / opaque, shall be strong, fit for purpose and provide value for money. Additional volunteers with suitable trailers are required to take 'rubbish' to the council tip, located just the other side of A12 when leaving Newbourne.

Nooze

AB reported that difficulties with sending Nooze to btinternet accounts had been resolved using another ISP and requested that an alternative Club account be Set up for this purpose.

The consensus of the Committee is that 1&1 IONOS is not particularly user friendly email account and that an alternative ISP should be considered.

Safety & Training

The next training day, re-qualification of Marshals is scheduled for 15th June. As an outcome of the various communications with IOPD regarding liability and insurance coverage, several new documents and procedures have been established. These include a Show briefing; show sign on sheets; marshal sign on; etc, the driving day sign on sheets for both participants and marshals will change. Also, IOPD have confirmed it is necessary to retain proof of signing for a minimum period of 3 years.

Shows

TA advised that a show team comprising of himself, Niki Broadley and Emma Pumfrey has been set up to ensure continuity, spread the workload and ensure his important aspect of the Clubs activities with its public interface is adequately represented at all times.

TA reported that arrangements for Heveningham show are in hand.

Competitions

RG reported a successful Novice Winch trial with 5 teams attending.

Next trial (13/14 July) will be a camp over at Snuggs Pit with a Tyro on the Saturday and a Punch Hunt on Sunday. PG plans to set up Friday 12th.

Web

AJ reported that Club has 1352 'Likes'. He proposes to update the Club website soon.

Correspondence

The Girls Guides will be using the show ground 27 July and have asked if the Club could provide a few members to give a talk about Land Rovers and provide some rides around the off-road course.

GW had received a request from Saxmundham Rotary for the Club to support a marathon they are organising for 3rd May next year.

Meeting closed 21.09

Next Meeting 7.30pm Wednesday 10th July at the Club

Minutes approved

.....
P.Corps 10/7/19



HILLCREST

VEHICLE SOLUTIONS

LAND ROVER SPECIALISTS

- **Specialist Repairs** requiring body removal
- **Chassis repairs** and replacement
- **Engine conversions** and replacement
- **Rebuilds**

- **MOT**
Discount if booked with a service
- **Servicing**
We carry out servicing to manufacturers specifications
- **Repairs**
All general repairs
- **Diagnostics**
Using the latest diagnostic technology
- **All makes and models welcome**
Modern and classic

**All mechanical work guaranteed for
12 months or 12,000 miles**

Hillcrest Vehicle Solutions Ltd, Hillcrest Garage, Cratfield Road,
Huntingfield, Halesworth, Suffolk, IP19 0QB

Tel: 01986 798668 Email: info@hillcrestvs.co.uk

Please call Jono Rout or Sandra French
for a no obligation quote or friendly advice

SLROC CLUB SHOP

Clothing, Stickers, etc

**All clothing is available to order in a range of sizes and colours,
just ask!**

T-Shirt	£14.00
Polo Shirt	£16.00
Sweatshirt	£18.00
Hoodie	£20.00
Contrast Hoodie	£22.00
Grizzly Fleece	£30.00
Chunky Zoodie	£30.00
Onesie	£30.00
Contrast Onesie	£30.00
Children's T-Shirt	£10.00
Children's Polo Shirt	£13.00
Children's Fleece	£20.00
Children's Hoodie	£16.00
Children's Hi-Viz Vest	£4.00
Cuffed Beanie	£10.00
5-Panel Cap	£10.00
Door / Panel Sticker	£4.00
Small Sticker	£1.00
Window Sticker	£1.00
www.slroc.uk.com Sticker (Black, Orange, Silver, Yellow, Red, Blue & White)	£3.00
Key Ring	£1.00

**Prices are correct at time of going to print but may be subject to
change.**

SLROC CLUB SHOP

Recovery Gear

2M Bridle	Price on Application
5M Rope	Price on Application
7M Rope	Price on Application
9M Rope	Price on Application
2M 5 tonne Strop	£17.00
4.75 tonne Shackle	£7.00
Jate Clamp	£18.00
Battery Clamp	£6.00

Prices correct at time of going to print but may be subject to change.
The Club Shop is at most events, and items are also available from:

Spencer White: - Email: clubshop@slroc.uk.com

Please get in touch if you wish to collect items from a Show.
Items will soon be featured on our web site at **www.slroc.uk.com**



Est. UK 1958

Bearmach

PARTS AND ACCESSORIES FROM OVER 200 BRANDS
OE BRANDED / GENUINE / BEARMACH

Photo: © L'Asie en soi-e



UK Next
Day Delivery



3 Year Warranty
on Bearmach-branded
products
*Exclusions apply



Technical Support
Ask us for help with
parts ID

CLUB DISCOUNT: 10% OFF

T&Cs: Valid on bearmach.com

Use code **SLROCTEN**

Excludes shipping, taxes, sale & clearance items

BUY ONLINE | BUY FROM A DISTRIBUTOR | OPEN A TRADE ACCOUNT



CLUB CONTACTS

CLUB PRESIDENT

Ralph Lambourne



CHAIRMAN

Pat Corps
07887 500799
chair@slroc.uk.com



CLUB SECRETARY

Graham White
secretary@slroc.uk.com



TREASURER

Michael Whitting
treasurer@slroc.uk.com



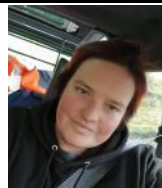
VICE CHAIR **COMPETITION SECRETARY**

Richard Gilmore
vicechair@slroc.uk.com
compesec@slroc.uk.com



MEMBERSHIP SECRETARY

Niki Broadley
membership@slroc.uk.com



OFF ROAD SECRETARY

Toby Parker
offroadsec@slroc.uk.com



CLUB CONTACTS

SAFETY & TRAINING OFFICER

Pat Corps
07887 500799
safety@slroc.uk.com



PR & SHOW CO-ORDINATOR

Tim Alden
pr@slroc.uk.com



CLUB SHOP

Spencer White
clubshop@slroc.uk.com



NOOZE EDITOR

Amy Berwick
07496 549234
nooze@slroc.uk.com



WEB SECRETARY

websec@slroc.uk.com
Andy Jeff



Please note: Some of the Committee Members have requested that details of their addresses are not published within the newsletter for personal reasons. Please do not let this put you off contacting any of the Committee, they will be only too glad to receive phone calls (as long as they are at a reasonable time of day, say **no later than 9:30pm**).

If you have any mail you wish to pass on to a Committee Member then it can be sent via any of the published addresses above. The Committee also respects the privacy of each and every Club member, and to that end, we do not give out details of Club members to any other organisation.

Important Information

On entering the access lane to the site, please adhere to the **5mph** speed limit. Failure to do so, may result in removal from the site with no refund of fees.

If only watching or socialising, please turn right to park in the rear car park. Do not park in the main car park or proceed to signing-on/scrutineering.

Trailers to be parked in designated area in main parking area.

If taking part in the event please stop at the signing-on hut first:

For insurance purposes, membership cards **must** be available for inspection at **any** club driving event, if requested. Only members holding a full UK driving licence* and who have **signed on**, may drive at any club event. *With the exception of 'Tyro Trials' where Supplementary Regulations may allow drivers of 13 years and upwards.

Then continue to scrutineering: **All** vehicles must be scrutineered prior to driving onto the courses. Minimum requirements for recovery points are two -points at the front with bridle, and manufacturer's tow hitch at the rear or two 'Jates' and bridle. Please fit bridle before scrutineering.

Seat belts (inc. lap-belts) must be fitted and worn by all occupants.

(No belt, no ride. This is for your own safety).

Once signed-on and scrutineered, you may continue to the parking area.

All loose items must be removed from the vehicle before going on the courses. Vehicles will be checked for these items and stickers.

15 mph site speed limit

No driving along the footpath at the bottom of the site, except at the designated crossing point for access to and from the Woodland Course.

All recoveries under the supervision, and at the discretion of a Marshal. All facets of winching operations may only be carried out by persons aged 18 and over, including rigging.

Pedestrians must not walk on the courses, only the access roads- this is for your own safety.

Children (under 16's) remain the sole responsibility of parents/carers at all times. Children must wear a Hi-Viz vest whilst outside a vehicle in all areas. Children must be accompanied by an adult in all active vehicle movement areas.

Dogs must be kept on leads and under proper control at all times.

It is the responsibility of the owner to clear up after your dog(s).

Do not drive roped-off areas.

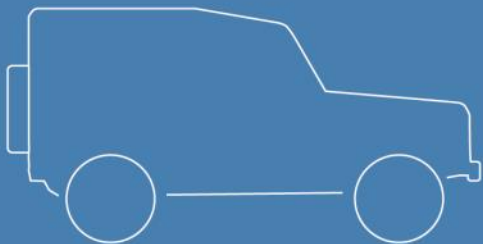
Do not remove ropes or posts unless instructed by a Marshal.

Strictly no drinking and driving. No motorcycles or quad bikes.

No tractor, Implement or overly-aggressive treaded tyres.

Please take all your litter home with you.

The Marshal's decision is final



Insurance tailored around you & your Land Rover

See how we measure up, call us on **0800 916 1288** and you could get a cheaper quote compared to online

At Adrian Flux we have over 40 years experience tailoring insurance to suit your specific needs. We don't believe in "one size fits all" when it comes to insurance, which is why you could save time and money by calling a member of our team directly.

Ask our experienced staff about:

- Club member discounts
- Agreed valuations
- Limited mileage discounts
- European breakdown cover
- Driving other vehicles

Car Club Quoteline: 0800 916 1288

Authorised & regulated by the Financial Conduct Authority