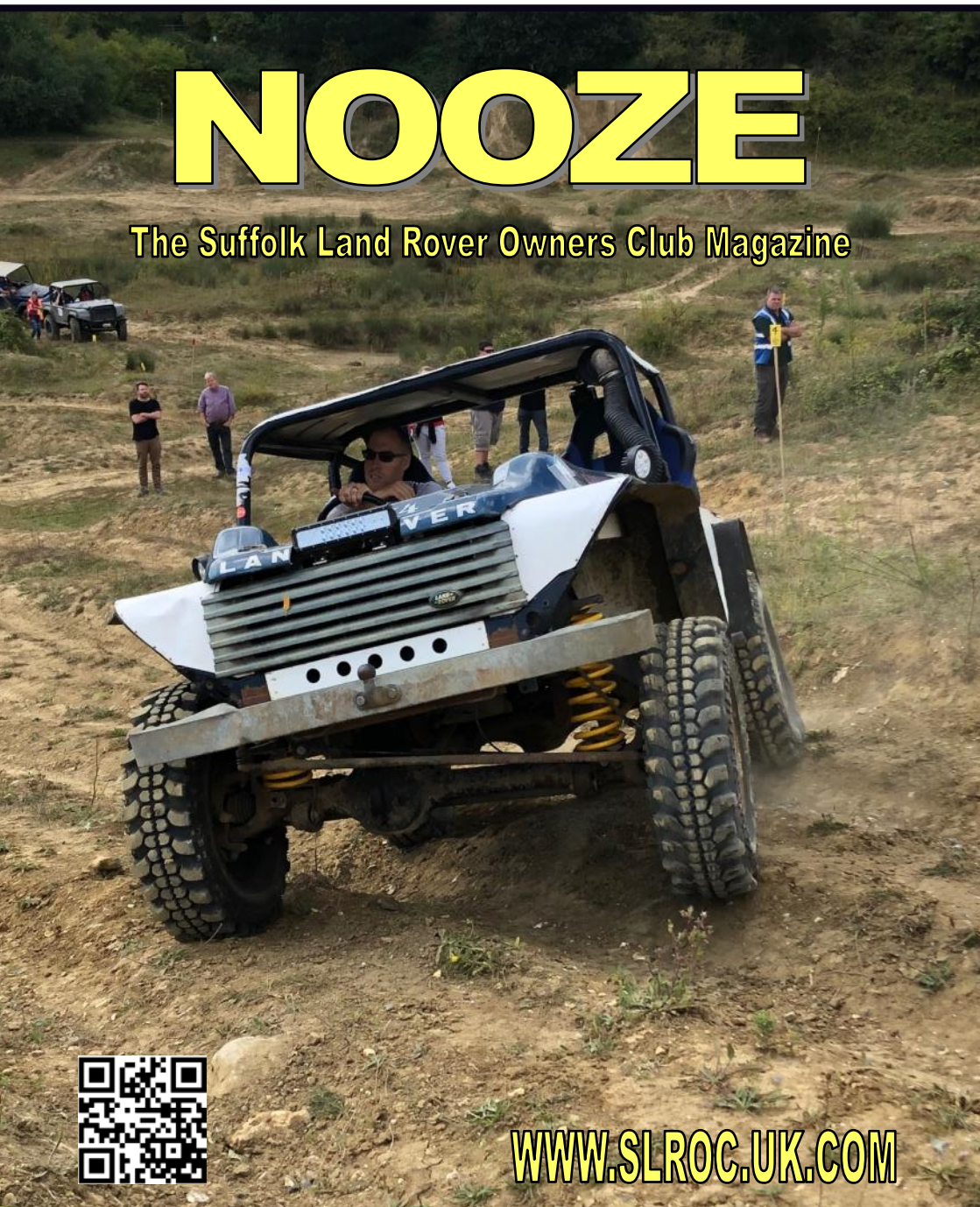




September 2019

# NOOZE

The Suffolk Land Rover Owners Club Magazine



[WWW.SLROC.UK.COM](http://WWW.SLROC.UK.COM)

# FOR ALL YOUR LAND ROVER SERVICING NEEDS



- Fully Trained Land Rover Technicians
- The latest technology IDS & SDD diagnostics and repairs
- Competitive pricing with no hidden extras

## **LINDACRE LAND ROVER SERVICE CENTRE**

2 Farthing Road, Sproughton Industrial Estate, Ipswich, IP1 5AP  
Tel 44 (0)1473 461 751. Fax 44 (0)1473 744 048.

LINDACRE IPSWICH



GO BEYOND

## **NOOZE**

is the "mouthpiece" of the  
**Suffolk Land Rover  
Owners Club**

SLROC welcomes any  
comments, contributions or  
complaints from our members.

Send your contributions to:

**Amy Berwick**

10 Hall Lane, Wacton,  
Norwich, NR15 2UH  
Tel: 07496549234

Or email me at:

**nooze@slroc.uk.com**

### **COPY DEADLINE:**

**15th** of the preceding  
month at the very latest  
please.

SLROC uses CB Channel 7

The opinions expressed in this  
publication are not necessarily  
those of the Editor, Committee,  
Club or Company.

Neither can responsibility be  
taken for the accuracy or  
otherwise of articles or  
advertisements placed.

All logo's, legends and artwork  
remain the property of SLROC  
and may not be reproduced  
without permission from the  
Committee.

©2002-2019 **Suffolk Land  
Rover Owners Club Ltd**

We would like to thank

**BETTAPRINT Woodbridge Ltd**

For their help in producing  
Nooze

SLROC Supports both national  
and local 4x4 response groups

### **Cover Picture**

Andy B showing everyone how  
it's done at Badwell Ash Trial

## **Nooze News!**

It's September already and I find myself wondering where the summer has gone. It feels only the other weekend we were at Suffolk show, yet now we are heading back into competition season!

Talking of which I went to the trial at Badwell Ash last weekend which was very fun to watch (and I got covered in mud... thanks Andy!). I haven't been to many of the competitions apart from the Tyro events at the club, so to see this trial was really interesting! The front cover pic was snapped at the event, however more pics will be in October's Nooze including a writeup from the winner (you know who you are)!

I'd like to use this opportunity to thank everyone who helped at the open day this year! After having thoughts about possible cancellation of the event due to the strong winds, I am so glad that everyone worked together and I hope everyone had a fantastic day! We raised £1170 for the club, which is a great sum of money to help keep the club going!

In this months Nooze we have an advert for the upcoming Tyro in September. This is held at Newbourne and is a great way to learn new skills, especially for those new to off-roading and young drivers! There are also photo's from the open day, and from the Festival of Wheels show.

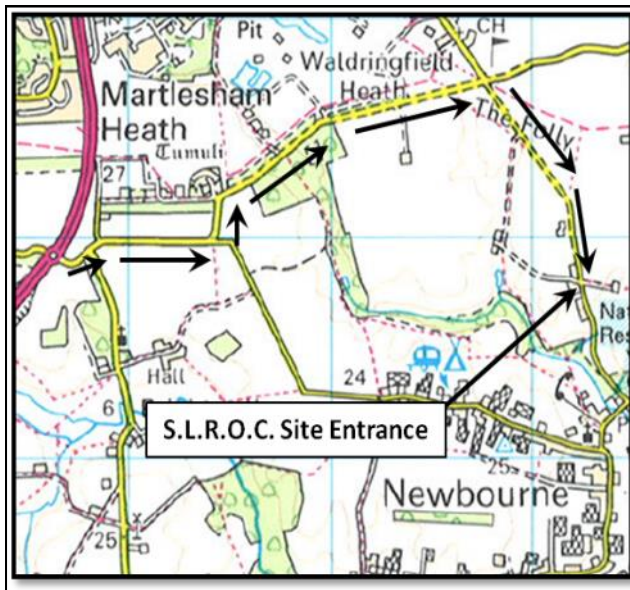
I am starting to struggle for content to put into Nooze, so if you do happen to go to an event and snap some pictures, or fancy putting a few words together about your latest project or want to review a recent purchase then please send it to me at nooze@slroc.uk.com.

Hope to see you soon,

Amy

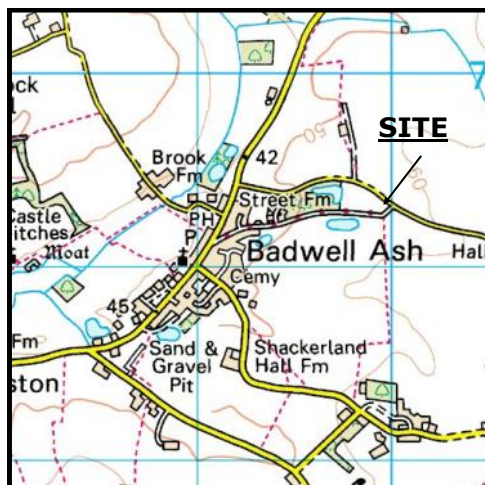


# Directions to the Newbourne club site



The club has its very own off-road driving site which we use monthly for weekend events, and competitions. The site is situated to the east of Ipswich, near to the village of Newbourne. Strict rules must be adhered to when using the site, to protect the safety of all users. Please keep your speed down around the village, and especially on the access track which has a 5mph limit. See you there!

## Badwell Ash



OS sheet 155 grid ref TL 000 693

## Snugg's Pit



OS sheet 155 grid ref TL 826 421

# Chat From the Chair

Well done everyone who attended Festival of Wheels. I only managed to attend on the Saturday, but still had time to have a wander around the show with Tim Alden and admire some of the exhibits. One chap had built a scaled down Willy's Jeep as a mobility Scooter/Car based around a transaxle from a Six person golf buggy, so he and his wife can sit side by side when they go to the shops together. Romance is not dead. One of the attractions, was a Ten-Seater Monster Truck giving rides to the public around a circular area, running over a couple of scrap car bonnets, and charging eight pounds per person for the pleasure. Our £3.50 per single and £10.00 per family is a very good deal. We had support from both our charities over the whole weekend complete with cakes and screams, and they've definitely benefitted from promoting themselves when unloading for us. I believe Sunday was even busier and we managed to raise over £4,600.00. What a sterling effort.

All of Sarah and Amy's hard work organising the Club Open Day came to fruition on the 11<sup>th</sup> August. BBQ with Paul Hester, Russell and Sheila with the food stall, Ralph and team from Mansfields with their Pop-Up spares shop and Children's Rovers, to name but a few. Blind bottles - Water or Wine, and not to be forgotten, an excellent Raffle. We had a steady stream of people attending for most of the day, everyone seemed to enjoy it, so much so five people signed up as new members. Our trusted charities were also there giving us their support. I know I've forgotten to mention names - sorry my mind is like a sieve! For everybody I've forgotten - from drivers to stallholders, thank you and well done. We managed to raise over £1,100.00 for the Club Coffers. Once again, thank-you Sarah and Amy for all your hard work organising the event.

Our last show of the season is the Henham Steam Rally. If you're planning on coming either day, or camping the weekend, please ensure you add your name to the forum so we know how many tickets we will need. It's another lovely show and generally quite busy. For all those members that haven't attended before, the course is set out through the picturesque Henham Estate, and it's an enjoyable course to navigate.

Other news - the Club has got a new petrol generator, so for those dark camp-over nights in the caravan, we will have light! We have also acquired a ride on mower to make Toby's job a lot easier, or anyone else who would like to help cut the grass. (Hint, hint!). BUT it does need some work on the engine to make it run properly, so if anyone has any knowledge of Briggs & Stratton Engines and would like to assist please contact Toby, our Off-Road Secretary - his details are in Nooze.

A good thing to remember when driving Off-Road, is to make sure your vehicles wheel nuts are properly tightened, as it doesn't take long for them to vibrate loose as it is not tarmac.

I hope to see some of you at Henham and for a smallish donation, Sheila's Bacon Butties will be available and a welcome start to the day.

All the best,

Pat

# **EVENTS PLANNER 2019**

This planner is intended as a guide and as such any event may be subject to change.

<u><b>When</b></u>	<u><b>Club Event</b></u>	<u><b>Where</b></u>	<u><b>Org</b></u>
Sept 8 <sup>th</sup>	3rd Training Day (Novice Driver)	Newbourne	P. Corps
<b>Sept 27<sup>th</sup></b>	<b>Tyro CCVT &amp; Camp Over</b>	<b>Newbourne</b>	<b>TBC</b>
Sept 28 <sup>th</sup>	Driving Day	Newbourne	TBC
<b>Oct 19<sup>th</sup></b>	<b>"Ladies/Junior" Tyro CCVT &amp; Camp Over</b>	<b>Newbourne</b>	<b>C. Finbow</b>
Oct 20 <sup>th</sup>	Driving Day & Auto Jumble	Newbourne	C. Finbow
<b>Nov 3<sup>rd</sup></b>	<b>Driving Day</b>	<b>Snuggs Pit</b>	<b>R. Gilmore</b>
Nov 17 <sup>th</sup>	Children in Need Driving Day	Newbourne	A. Jeff
<b>Nov 24<sup>th</sup></b>	<b>CCVT</b>	<b>Snuggs Pit</b>	<b>A. cutting</b>
Dec 29th	Mince Pie Driving Day	Newbourne	G. White

**\*\*\*Events requiring Pre-Booking are in bold type\*\*\***

Driving Days - **£10\*** - Driving Day Junior Afternoon **£5**

CCVT and Tyro Trials - still only **£15 Pre-Booked**

CCVT and Tyro Trial - Arrive & Drive (where permitted) **£20**

**\*Don't forget: It's only a fiver for each extra driver**



# **SHOW PLANNER 2019**

This planner is intended as a guide and as such any event may be subject to change.

<b><u>When</u></b>	<b><u>Show</u></b>	<b><u>Where</u></b>	<b><u>CoC / Org</u></b>
Sept 14 <sup>th</sup> -15 <sup>th</sup>	LRO Show	Peterborough	W. Dowe
Sept 21 <sup>st</sup> -22 <sup>nd</sup>	Henham Steam Rally	Henham Park	R. Heatehr

## **Tyro Cross Country Vehicle Trial** **28th September 2019** **Newbourne**

For the less experienced member, youngsters of 13 and above and just the plain curious, come and have a go and see what all the fuss is about with this trialling lark. It's seriously addictive, you have been warned! ;)

The day will begin at 9am for scrutineering followed by a prompt 10 am start (sorry no late entries). Be prepared for a full days trialling aiming to finish at around 4pm. The access roads around the yellow course will be available between 9am and 9.45am for driver familiarisation.



This is also a camp over, so why not stay on for the driving day on Sunday?

Pre-booking for this event is via the Club forum, Facebook or email [compsec@slroc.uk.com](mailto:compsec@slroc.uk.com). Pre-booking entrance fee £15 or Arrive and Drive £20.

All drivers must be members but co-drivers don't need to be.



Please Support Our Advertisers As They Support Us!



**30 YEARS  
EXPERIENCE**

## **LAND ROVER SPECIALISTS**

- ✓ *Service*
- ✓ *Maintenance*
- ✓ *Parts*
- ✓ *Accessories*

**50% cheaper than the main dealer plus great discounts for club members!**

**WWW.JSF4X4.CO.UK**

**01206 396644**

Unit 1, Causeway End Industrial Estate, Lawford,  
Manningtree, CO11 2LH

Please mention 'Nooze' when replying to adverts



# LAND ROVER SPECIALIST



Servicing, Repairs and MOT work  
Vehicle Preparation

Autologic Diagnostic

Visionaire Tracking Systems

10% Discount for club Members ✳

**\* On Labour Only**

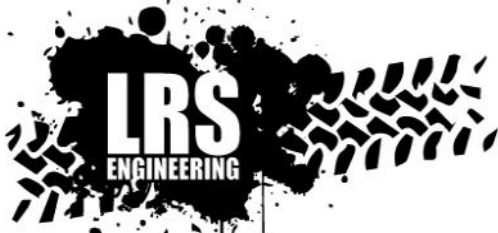
**SWB, Mutford Garage, Nr Beccles. NR34 7UL**





## Open Day 2019





**Unit 6 Westmead,  
Hedingham Road  
Gosfield, Nr Halstead  
Essex CO9 1UP  
01787 469553**

**www.lrsengineering.co.uk**



**Bearmach**  
LAND ROVER PARTS



**B WILDBEAR**

**AllMakes4x4**  
Quality, Value and Performance

**Terrafirm**  
Serious 4x4 Accessories

*Servicing, Repairs, Diagnostics, Programming,  
Genuine & Non Genuine Parts Supplied  
Registered To Land Rover Online Service System*



Find us on:  
**facebook.**





## Festival of Wheels 2019









# Mansfield 4x4

BURY ST. EDMUNDS LTD

01284 767174 [www.mansfield4x4burystedmunds.com](http://www.mansfield4x4burystedmunds.com)

**Parts, Accessories, Service, Repair and Diagnostic Testing  
for all models of Land Rover and Range Rover**



## MOT Testing for all cars

3D wheel alignment available



**Winch mounts • Side bars • Underbody protection • Exhausts  
Engine and Clutch upgrades • Wheels and Tyres**

**And much more....**

Email: [info@mansfield4x4.net](mailto:info@mansfield4x4.net)

Unit A1 Chase Road, Northern Way Ind. Est., Bury St Edmunds, Suffolk, IP32 6NT



**AllMakes4x4**  
Quality, Value and Performance

**TerraFirma**  
Service 4x4 Accessories

**ODYSSEY**  
THE EXTREME BATTERY

**DRAPER**

**GS**

**GS**

**WARN**

**BRITPART**

**Bearmach**

**EDGE**

**LightFORCE**  
PERFORMANCE LIGHTS

**GOODWINCH.COM**

**SUPERWINCH**



**Mansfield 4x4**  
BURY ST. EDMUNDS LTD

**01284 767174**

[www.mansfield4x4burystedmunds.com](http://www.mansfield4x4burystedmunds.com)

***Free air conditioning  
efficiency report***

***Free 4 wheel alignment check  
with a printed report.***

***Air conditioning regas for  
R134 systems £45 + vat***

***MOT test class 4 £39.95***

***MOT test class 7 £47.95***

***Parts, Accessories, Service, Repair and Diagnostic Testing  
for all models of Land Rover and Range Rover***

***Email: [info@mansfield4x4.net](mailto:info@mansfield4x4.net)***



Unit A1 Chase Road, Northern Way Ind. Est., Bury St Edmunds, Suffolk, IP32 6NT





# HWB AUTOMOTIVE

INDEPENDENT LAND ROVERS • CLASSIC & SPORTS PRESTIGE SPECIALISTS

LAND ROVER SPECIALISTS

LAND ROVER MASTER TECHNICIAN  
OVER 10 YEARS EXPERIENCE

ALL MAKES OF SPORTS, CLASSIC &  
PRESTIGE CARS SERVICED & REPAIRED

FULL LAND ROVER DIAGNOSTICS

PERFORMANCE UPGRADES & BESPOKE  
MODIFICATIONS UNDERTAKEN

RESTORATION & RECOMMISSION WORK

MOT PREPARATION & MOT'S

AIR CONDITIONING SERVICING

ATF TRANSMISSION  
MEGA FLUSH SERVICES

Find us at

UNIT 7B | BLYTH RD IND. ESTATE  
HALESWORTH | IP19 8EN

T 01986 873 999

W [HWBAUTOMOTIVE.COM](http://HWBAUTOMOTIVE.COM)

E [INFO@HWBAUTOMOTIVE.COM](mailto:INFO@HWBAUTOMOTIVE.COM)



UNLEASH THE POTENTIAL

ALIVE™

ALIVE TUNING  
AUTHORISED AGENTS  
ECU REMAPPING AND PERFORMANCE SPECIALISTS



# Meeting held Wednesday 10<sup>th</sup> July, 7.30pm

## Minutes prepared by Graham White

**Present** Graham White (GW), Pat Corps (PC)(Chair), Tim Alden (TA), Richard Gilmore (RG), Niki Broadley (NB), Toby Parker (TP), Amy Berwick (AB), Andy Jeff (AJ)

**Apologies** - Michael Whitting

**Minutes of previous meeting.** Approved as a true account.

### **Matters arising from previous meeting.**

**Outstanding actions.** (NB Action reference = Date + numeric i.e. MMDDNN)

- 110311 – Membership Sec to have access to bank acc to check memberships – **Action MW**
- 180907 – Action Complete
- 100503 – see action 060505
- 010401 – Change Bank if Membership Sec still has no access to account after January – **Action MW**
- 010407 – Action Complete
- 010412 – Discuss with Paul Whitting potential Committee position – **Action AJ**
- 050301 – Action complete
- 050304 – Set up an account with 'Lumberjacks' where the Club buys materials – **Action MW**
- 060501 / 2 – Actions complete
- 060503 – Establish a suitable secure storage area for sign on sheets – **Action PC**
- 060504 – Action Complete
- 060505 – 5kW Generator to be scrapped.
- 060506 – Resolve issues with the laptop used to produce Nooze. – **Action TA** On going
- 060507 / 8 / 9 /10/ 11 / 12 – **Actions complete**

### **Actions arising this meeting**

- 071001 – Proceed with a card reader and associated App for use at the Club. – **Action AJ**
- 071002 – Water meter to be read and payment to Brian made – **Action MW**
- 071003 – Include a request for next years charities in Nooze – **Action AB**
- 071004 – Discuss the position of Club Treasurer with MW – **Action RG**

- 071005 – Pay donation to Heveningham – **Action MW**
- 071006 – Get machinery in to cut back brambles – **Action TP**
- 071007 – Ensure timber for veranda roof is available before maintenance day – **Action PC**
- 071008 – A list of jobs to be posted for maintenance day – **Action TP**
- 071009 – Keys are to be issued to each Committee member – **Action AJ**
- 071010 – Obtain quotes for a replacement grass cutter – **Action PC**
- 071011 – Organise a meeting with Suffolk Show – **Action TA**
- 071012 – Change the 21/22 September Tyro, camp over & driving day to 27/28 – **Action AB**
- 071013 – Resolve large size of Nooze file – **Action AB**
- 071014 – Include an item to discuss show prices on next meeting agenda – **Action GW**
- 071015 – Identify annual budgets for Club Maintenance, Service / rent, maintenance / replacement of equipment, etc. - **Action MW**

### **Calendar items**

Water meter to be read and appropriate payment made to Brian.  
Request for charity nominations for next years charities to be included in next issue of Nooze.

### **Membership**

New member – Clinton Marston, Hardwick. Proposed TP, Sec AJ

### **Finance report from MW**

£17,925.58 in bank @ 9/7/19

£10,052.50 is charity money, £7,873.08 balance

All supplier invoices are paid and up to date, including Griffin Designs

Second instalment of site rent due

Water bill payment due (action 071002)

Donation to Heveningham outstanding (action 071005)

The position of Treasurer was discussed and in the light of MW's relocation and the communication issues it was agreed that RG would ask MW to step down. In the event of MW stepping down it was proposed that AJ would take over the role of treasurer.

Proposed PC, Seconded GW, all agreed.

### **Club Site**

TP confirmed the delivery of the laminate for the veranda roof. However, the timber and fixings were pending the outcome of setting up an account with Lumberjacks. TP stressed the urgency of getting the veranda done during the forthcoming maintenance day as there is unlikely to be another opportunity before winter.

It was agreed that TP should proceed with getting a tractor fitted with a flail to cut the brambles back. The black course requiring attention to the service tracks only.

## **Nooze**

TA advised that the problems with the laptop used for Nooze appeared to be a software issue.

## **Safety & Training**

PC confirmed that the training day, re-qualification of Marshals was completed successfully on 15<sup>th</sup> June. During which Marshals were asked to occasionally step up to C of C. Also Marshals attending shows would be required to act as Marshals but show would not be include in the required 3 duties per year.

RG expressed the difficulty of not having enough Marshals at off-site events.

PC confirmed there were currently 21 members qualified as Marshals, and that the list of Marshals was posted in the Scrutineering hut.

TP advised that the Clubs grass cutter is virtually unserviceable and need replacing.

## **Shows**

Heveningham payment due, BACS details now with MW. The show went well without safety issues that were made apparent last year, although there is still an issue of public in our vehicle waiting area. Festival of Wheels currently has 26.5 members signed up, the site prep has been carried out.

A meeting is to be arranged with Suffolk Show to clarify the Clubs future position as there is some ambiguity with the service agreement that was set in place earlier this year.

AB reported that currently only 15 members have volunteered to help. She was advised that monitoring the car park and entrance were difficult but necessary duties to cover. GW was nominated CofC.

TA reported that Henham paperwork is complete.

## **Competitions**

RG reported that the Snuggs pit events 13/14 July, with camp over had to be cancelled due to lack of support. In general, the attendance of Club members has fallen so that the events rely on non-members to make them viable.

RG proposed changing the November Winch trial into a 'Open Driving Day' rather than a competition. Giving members an opportunity to develop their skills around Snuggs Pit.

RG raised the issue of young people riding in vehicles during a trial and read out the IOPD rules on the subject. Which appeared clear on the age of front seat passengers and the Committee agreed that not having rear seats (as in a buggy or pick-up) did not change that rule. It was agreed that the Club will continue to use the 2 in 4 rule when determining if a vehicle is a Land Rover, i.e it shall have two out of the following; body, engine, chassis, drive chain.

**Web** AJ reported that Club has 1363 'Likes'. He confirmed the Club website is now up to date.

### **Correspondence**

The Girls Guides will be using the show ground 27 July and have asked if the Club could provide a few members to give a talk about Land Rovers and provide some rides around the off-road course. GW had received a request from Saxmundham Rotary for the Club to support a marathon they are organising for 3<sup>rd</sup> May next year.

### **Other business**

AJ presented a report on the two principle card readers Sum Up & Izettle, described how they operate and what the comparative costs would be. It was agreed that initially the Club should proceed with getting just one Izettle reader, which would be available for use at the Club and at shows.

Further to action 060508 AJ presented a review he had carried out regarding our website and email options. It was agreed to leave the website with 1&1 Ionos as changing it to Google would require G suite which would be significantly more expensive. Email accounts could be changed to G mail.

It was agreed that CofC for each event needs to be confirmed well before each that event.

It was agreed that annual budgets be set for the various costs the Club incurs. This will enable TP (and others) to understand what part of the Clubs income will be available for jobs that need doing leading to improved planning and will give structure to Club spending where costs are not annual.

Meeting closed 22.30

**Next Meeting** 7.30pm Wednesday 14<sup>th</sup> August at the Club

**Minutes approved..... P.Corps 14/8/19**





# HILLCREST

VEHICLE SOLUTIONS

LAND ROVER SPECIALISTS

- **Specialist Repairs** requiring body removal
- **Chassis repairs** and replacement
- **Engine conversions** and replacement
- **Rebuilds**
  
- **MOT**  
Discount if booked with a service
- **Servicing**  
We carry out servicing to manufacturers specifications
- **Repairs**  
All general repairs
- **Diagnostics**  
Using the latest diagnostic technology
- **All makes and models welcome**  
Modern and classic

**All mechanical work guaranteed for  
12 months or 12,000 miles**

Hillcrest Vehicle Solutions Ltd, Hillcrest Garage, Cratfield Road,  
Huntingfield, Halesworth, Suffolk, IP19 0QB

Tel: 01986 798668 Email: [info@hillcrestvs.co.uk](mailto:info@hillcrestvs.co.uk)

Please call Jono Rout or Sandra French  
for a no obligation quote or friendly advice

# **SLROC CLUB SHOP**

## **Clothing, Stickers, etc**

**All clothing is available to order in a range of sizes and colours,  
just ask!**

<b>T-Shirt</b>	<b>£14.00</b>
<b>Polo Shirt</b>	<b>£16.00</b>
<b>Sweatshirt</b>	<b>£18.00</b>
<b>Hoodie</b>	<b>£20.00</b>
<b>Contrast Hoodie</b>	<b>£22.00</b>
<b>Grizzly Fleece</b>	<b>£30.00</b>
<b>Chunky Zoodie</b>	<b>£30.00</b>
<b>Onesie</b>	<b>£30.00</b>
<b>Contrast Onesie</b>	<b>£30.00</b>
<b>Children's T-Shirt</b>	<b>£10.00</b>
<b>Children's Polo Shirt</b>	<b>£13.00</b>
<b>Children's Fleece</b>	<b>£20.00</b>
<b>Children's Hoodie</b>	<b>£16.00</b>
<b>Children's Hi-Viz Vest</b>	<b>£4.00</b>
<b>Cuffed Beanie</b>	<b>£10.00</b>
<b>5-Panel Cap</b>	<b>£10.00</b>
<b>Door / Panel Sticker</b>	<b>£4.00</b>
<b>Small Sticker</b>	<b>£1.00</b>
<b>Window Sticker</b>	<b>£1.00</b>
<b>www.slroc.uk.com Sticker (Black, Orange, Silver, Yellow, Red, Blue &amp; White)</b>	<b>£3.00</b>
<b>Key Ring</b>	<b>£1.00</b>

**Prices are correct at time of going to print but may be subject to  
change.**

# **SLROC CLUB SHOP**

## **Recovery Gear**

<b>2M Bridle</b>	<b>Price on Application</b>
<b>5M Rope</b>	<b>Price on Application</b>
<b>7M Rope</b>	<b>Price on Application</b>
<b>9M Rope</b>	<b>Price on Application</b>
<b>2M 5 tonne Strop</b>	<b>£17.00</b>
<b>4.75 tonne Shackle</b>	<b>£7.00</b>
<b>Jate Clamp</b>	<b>£18.00</b>
<b>Battery Clamp</b>	<b>£6.00</b>

Prices correct at time of going to print but may be subject to change.  
The Club Shop is at most events, and items are also available from:

Spencer White: - Email: [clubshop@slroc.uk.com](mailto:clubshop@slroc.uk.com)

Please get in touch if you wish to collect items from a Show.  
Items will soon be featured on our web site at **[www.slroc.uk.com](http://www.slroc.uk.com)**

---

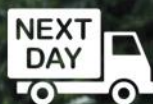


Est. UK 1958

# Bearmach

PARTS AND ACCESSORIES FROM OVER 200 BRANDS  
OE BRANDED / GENUINE / BEARMACH

Photo: © L'Asie en soi-e



UK Next  
Day Delivery



**3 Year Warranty**  
on Bearmach-branded  
products  
\*Exclusions apply



**Technical Support**  
Ask us for help with  
parts ID

**CLUB DISCOUNT: 10% OFF**

T&Cs: Valid on [bearmach.com](http://bearmach.com)

Use code **SLROCTEN**

Excludes shipping, taxes, sale & clearance items

**BUY ONLINE | BUY FROM A DISTRIBUTOR | OPEN A TRADE ACCOUNT**





# CLUB CONTACTS

## **CLUB PRESIDENT**

Ralph Lambourne



## **CHAIRMAN**

Pat Corps  
07887 500799  
chair@slroc.uk.com



## **CLUB SECRETARY**

Graham White  
secretary@slroc.uk.com



## **TREASURER**

Michael Whitting  
treasurer@slroc.uk.com



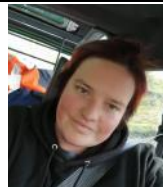
## **VICE CHAIR COMPETITION SECRETARY**

Richard Gilmore  
vicechair@slroc.uk.com  
compesec@slroc.uk.com



## **MEMBERSHIP SECRETARY**

Niki Broadley  
membership@slroc.uk.com



## **OFF ROAD SECRETARY**

Toby Parker  
offroadsec@slroc.uk.com



# CLUB CONTACTS

## **SAFETY & TRAINING OFFICER**

Pat Corps  
07887 500799  
safety@slroc.uk.com



## **PR & SHOW CO-ORDINATOR**

Tim Alden  
pr@slroc.uk.com



## **CLUB SHOP**

Spencer White  
clubshop@slroc.uk.com



## **NOOZE EDITOR**

Amy Berwick  
07496 549234  
nooze@slroc.uk.com



## **WEB SECRETARY**

websec@slroc.uk.com  
Andy Jeff



**Please note:** Some of the Committee Members have requested that details of their addresses are not published within the newsletter for personal reasons. Please do not let this put you off contacting any of the Committee, they will be only too glad to receive phone calls (as long as they are at a reasonable time of day, say **no later than 9:30pm**).

If you have any mail you wish to pass on to a Committee Member then it can be sent via any of the published addresses above. The Committee also respects the privacy of each and every Club member, and to that end, we do not give out details of Club members to any other organisation.

---

## Important Information

On entering the access lane to the site, please adhere to the **5mph** speed limit. Failure to do so, may result in removal from the site with no refund of fees.

**If only watching or socialising, please turn right to park in the rear car park. Do not park in the main car park or proceed to signing-on/scrutineering.**

**Trailers to be parked in designated area in main parking area.**

If taking part in the event please stop at the signing-on hut first:

For insurance purposes, membership cards **must** be available for inspection at **any** club driving event, if requested. Only members holding a full UK driving licence\* and who have **signed on**, may drive at any club event. \*With the exception of 'Tyro Trials' where Supplementary Regulations may allow drivers of 13 years and upwards.

Then continue to scrutineering: **All** vehicles must be scrutineered prior to driving onto the courses. Minimum requirements for recovery points are two -points at the front with bridle, and manufacturer's tow hitch at the rear or two 'Jates' and bridle. Please fit bridle before scrutineering.

Seat belts (inc. lap-belts) must be fitted and worn by all occupants.

**(No belt, no ride.** This is for your own safety).

Once signed-on and scrutineered, you may continue to the parking area.

**All** loose items must be removed from the vehicle before going on the courses. Vehicles will be checked for these items and stickers.

### **15 mph site speed limit**

No driving along the footpath at the bottom of the site, except at the designated crossing point for access to and from the Woodland Course.

**All recoveries under the supervision, and at the discretion of a Marshal. All facets of winching operations may only be carried out by persons aged 18 and over, including rigging.**

**Pedestrians must not walk on the courses, only the access roads- this is for your own safety.**

**Children (under 16's) remain the sole responsibility of parents/carers at all times. Children must wear a Hi-Viz vest whilst outside a vehicle in all areas. Children must be accompanied by an adult in all active vehicle movement areas.**

Dogs must be kept on leads and under proper control at all times.

It is the responsibility of the owner to clear up after your dog(s).

**Do not drive roped-off areas.**

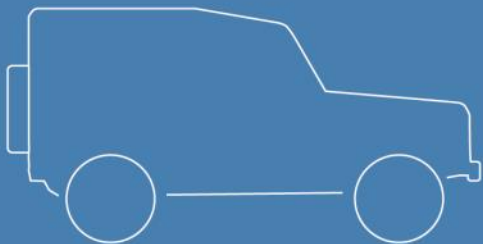
**Do not remove ropes or posts unless instructed by a Marshal.**

Strictly no drinking and driving. No motorcycles or quad bikes.

No tractor, Implement or overly-aggressive treaded tyres.

Please take all your litter home with you.

**The Marshal's decision is final**



# Insurance tailored around you & your Land Rover

See how we measure up, call us on **0800 916 1288** and you could get a cheaper quote compared to online

At Adrian Flux we have over 40 years experience tailoring insurance to suit your specific needs. We don't believe in "one size fits all" when it comes to insurance, which is why you could save time and money by calling a member of our team directly.

## Ask our experienced staff about:

- Club member discounts
- Agreed valuations
- Limited mileage discounts
- European breakdown cover
- Driving other vehicles

**Car Club Quoteline: 0800 916 1288**

Authorised & regulated by the Financial Conduct Authority